
Doan Brook Enhancement Project

Conceptual Design and Implementation Schedule

Appendix: Conceptual Design Drawings

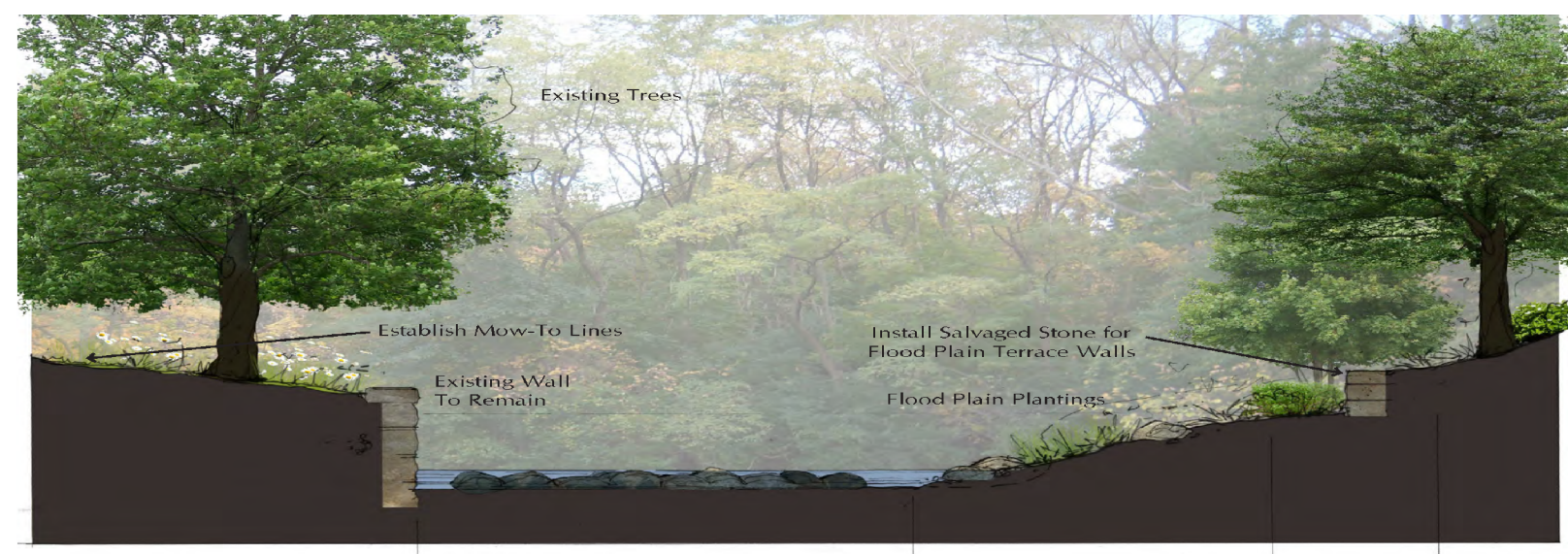
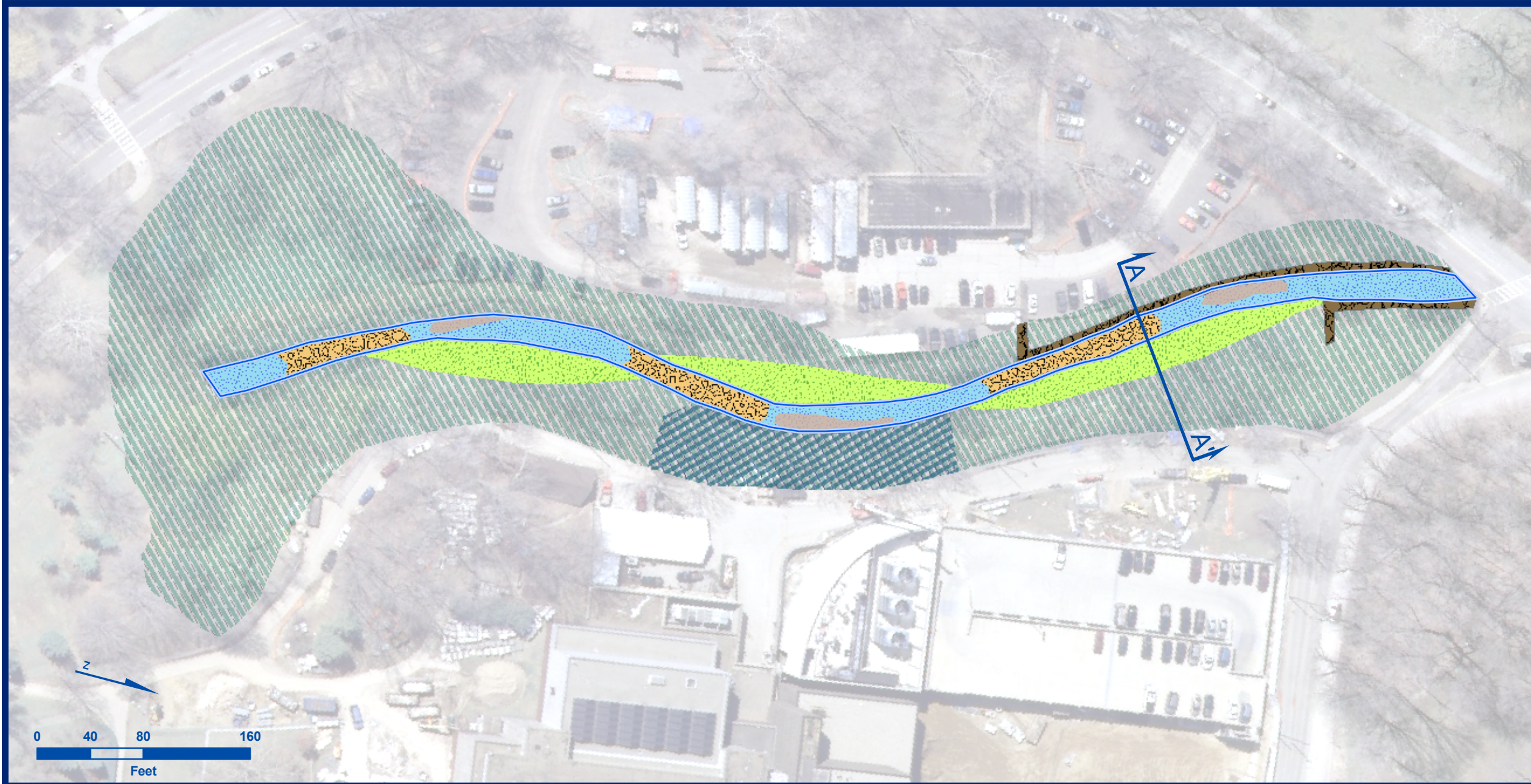
design: Link/Zaharija
mapping: Jira

date: November 2009

Doan Brook Enhancement

REACH # I
University Circle Culvert to Jeptha
950 ft

SE-1



Existing Bank Channel Vegetation Riffle @ Restored Brook Channel Flood Plain Enhancements Riparian Planting

SECTION A
Doan Brook Enhancements

Legend

- Contributing Walls Repair / Remaining
- Pools
- Riffles
- Proposed Channel Alignment
- Flood Plain Enhancement
- Steep Bank Repair / Protection
- Riparian Plantings Enhancement



Existing Bank Channel Vegetation

Riffle @ Restored Brook Channel

Flood Plain Enhancements

Riparian
Planting

SECTION A

Doan Brook Enhancements

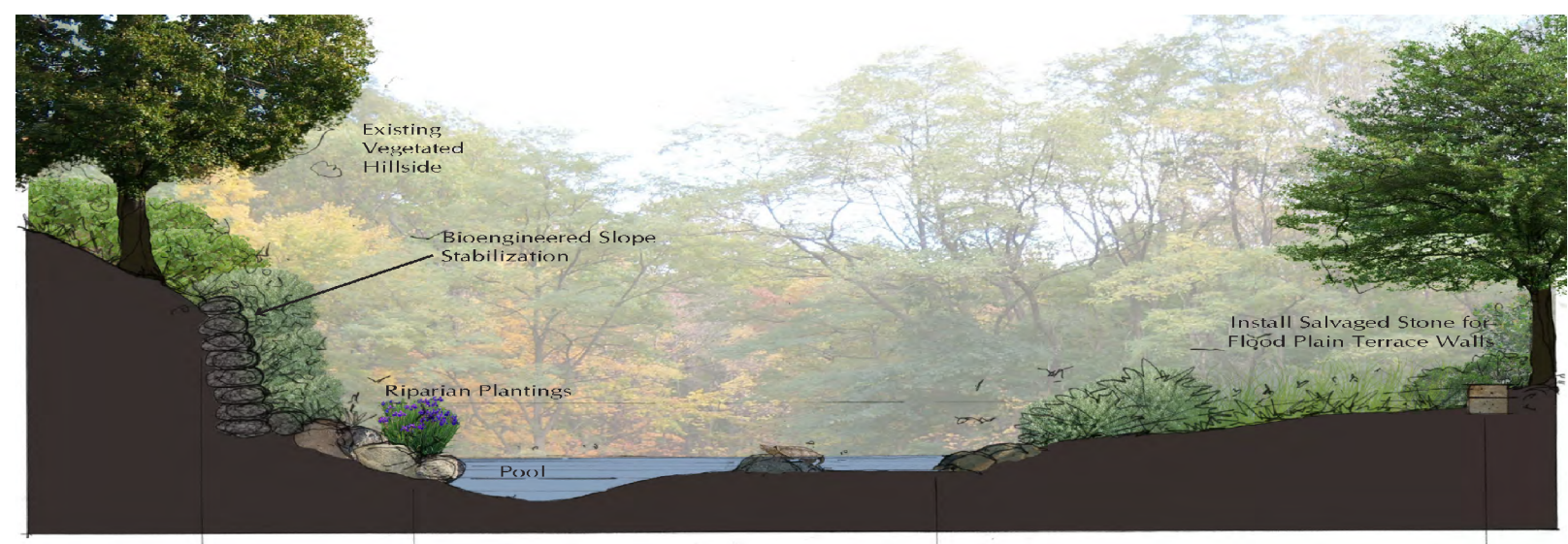
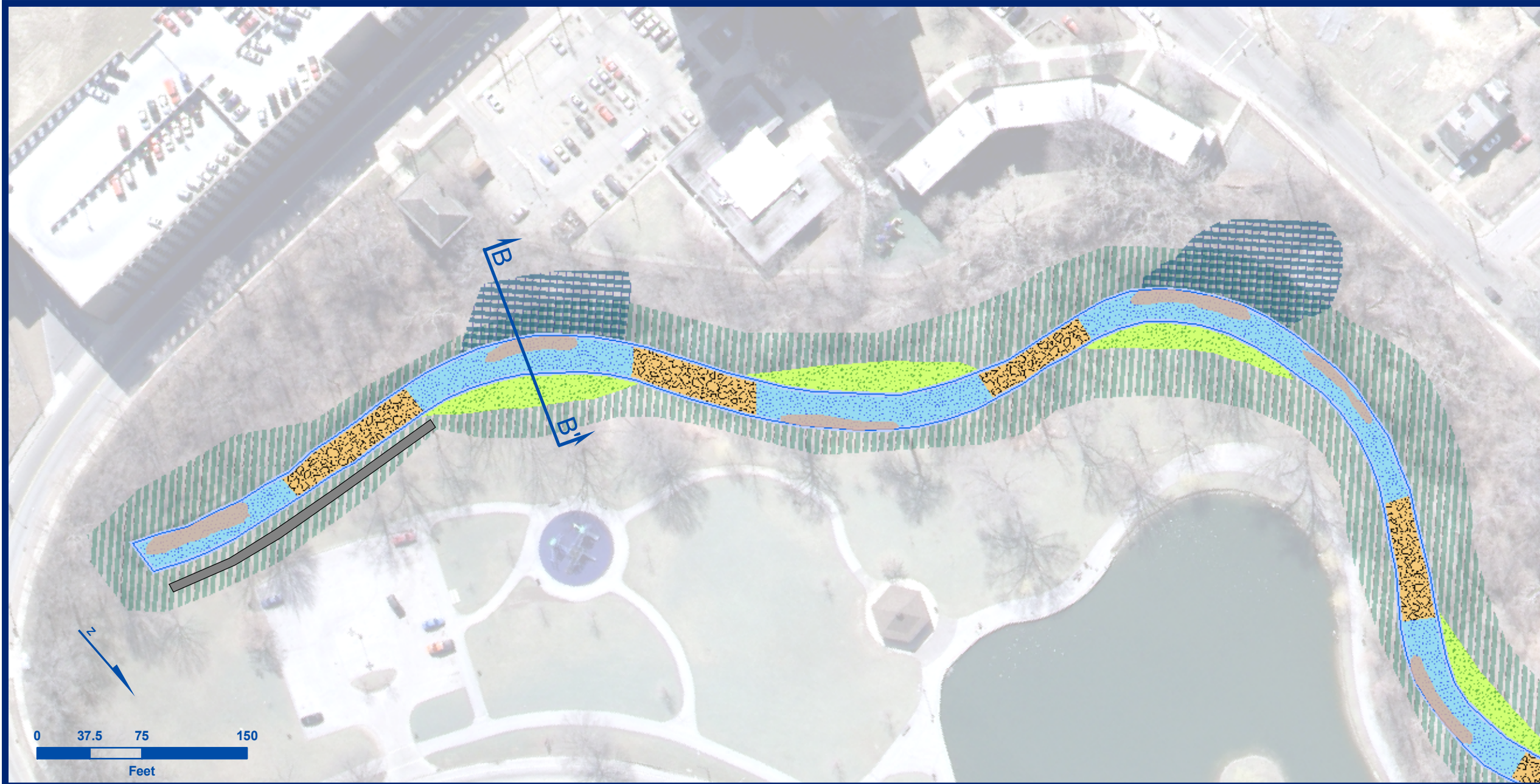
design: Link/Zaharija
mapping: Jira

date: November 2009

Doan Brook Enhancement

REACH # 2
East 105th Culvert to Wade Pond
1000 ft

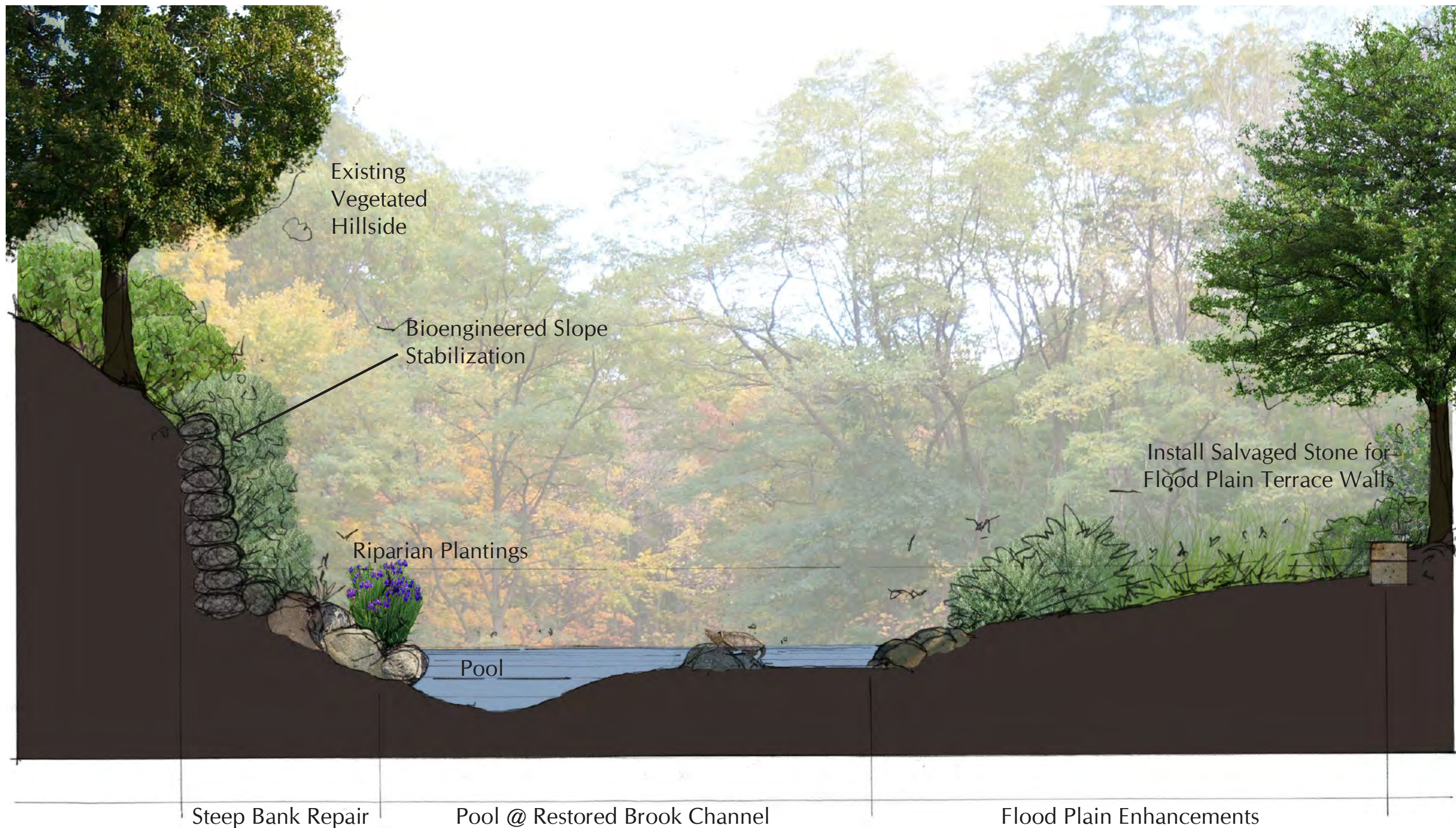
SE-2



Legend

- Proposed Channel Alignment
- Riparian Plantings Enhancement
- Flood Plain Enhancement
- Steep Bank Repair / Protection
- Contributing Walls Repair / Remaining
- Pools
- Riffles
- Existing Sheet Pile Wall

SECTION B
Doan Brook Enhancements



SECTION B

Doan Brook Enhancements

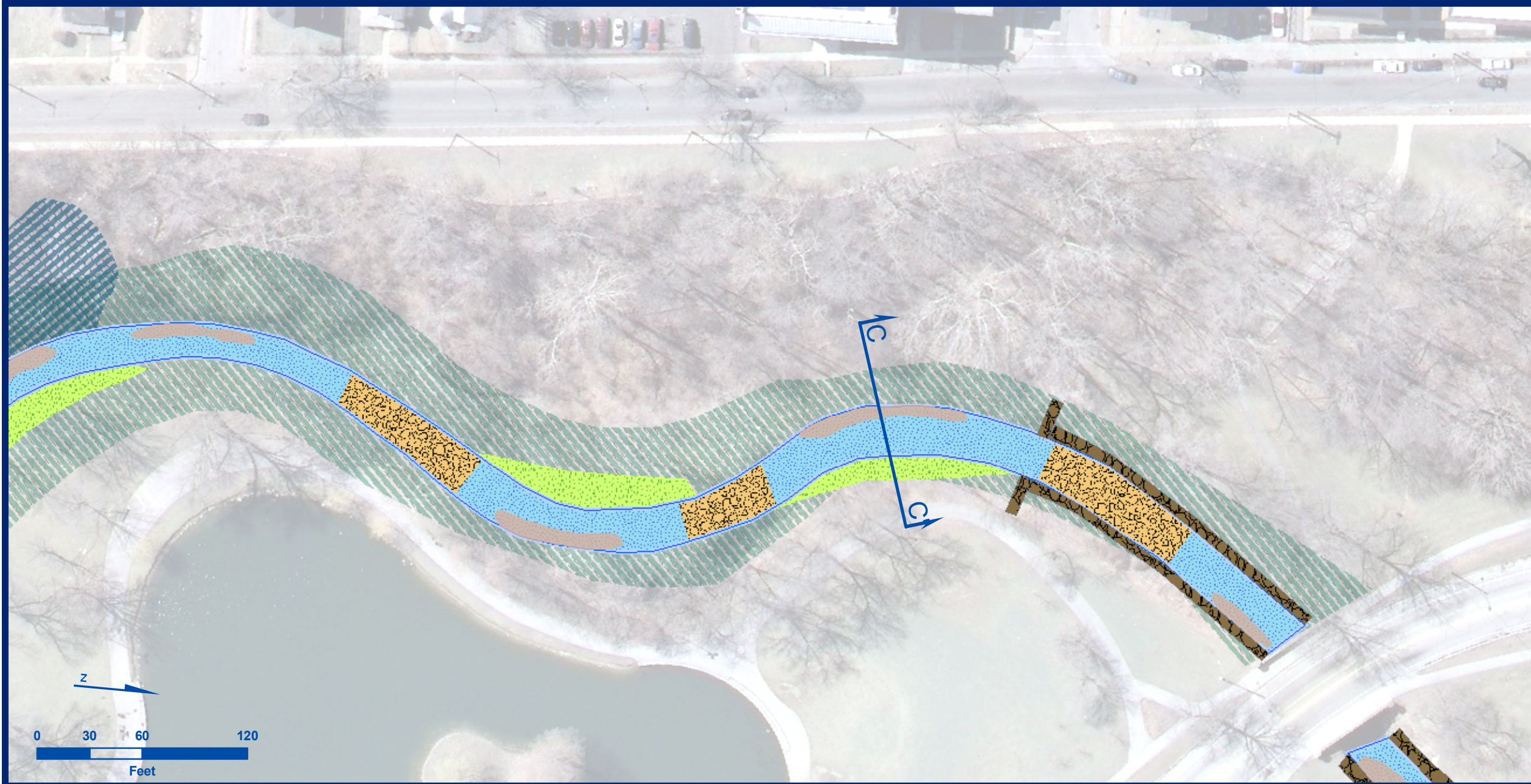
design: Link/Zaharija
mapping: Jira

date: November 2009

Doan Brook Enhancement

REACH # 3
Wade Pond to MLK
700 ft

SE-3



Riparian Plantings Pool @ Restored Brook Channel Flood Plain Enhancements Existing Trees to Remain Existing Trail to Remain
SECTION C
Doan Brook Enhancements

Legend

- Proposed Channel Alignment
- Riparian Plantings Enhancement
- Flood Plain Enhancement
- Steep Bank Repair / Protection
- Contributing Walls Repair / Remaining
- Pools
- Riffles



Existing Bank Vegetation
Remove Invasive Species

Install Salvaged Stone for
Flood Plain Terrace Walls

Riparian Plantings	Pool @ Restored Brook Channel	Flood Plain Enhancements	Existing Trees to Remain	Existing Trail to Remain
SECTION C				

Doan Brook Enhancements

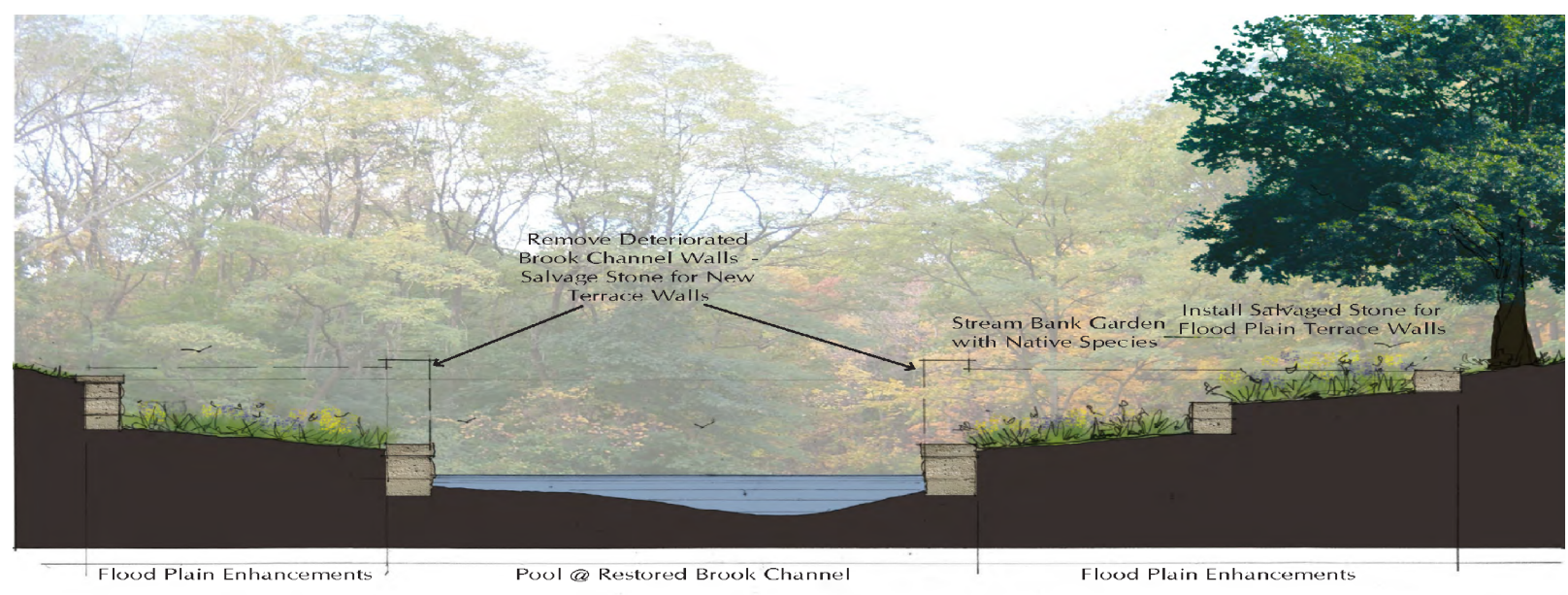
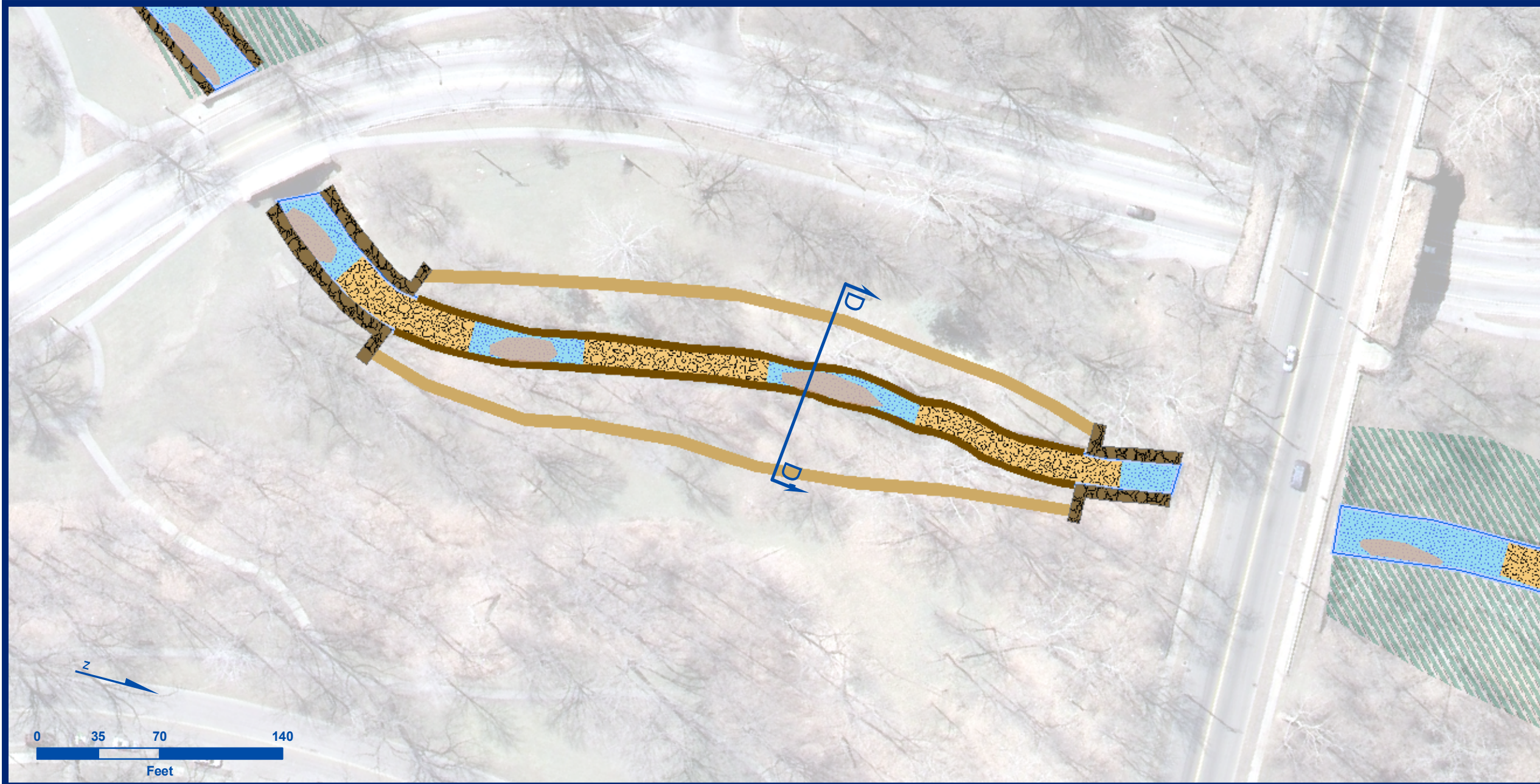
design: Link/Zaharija
mapping: Jira

date: November 2009

Doan Brook Enhancement

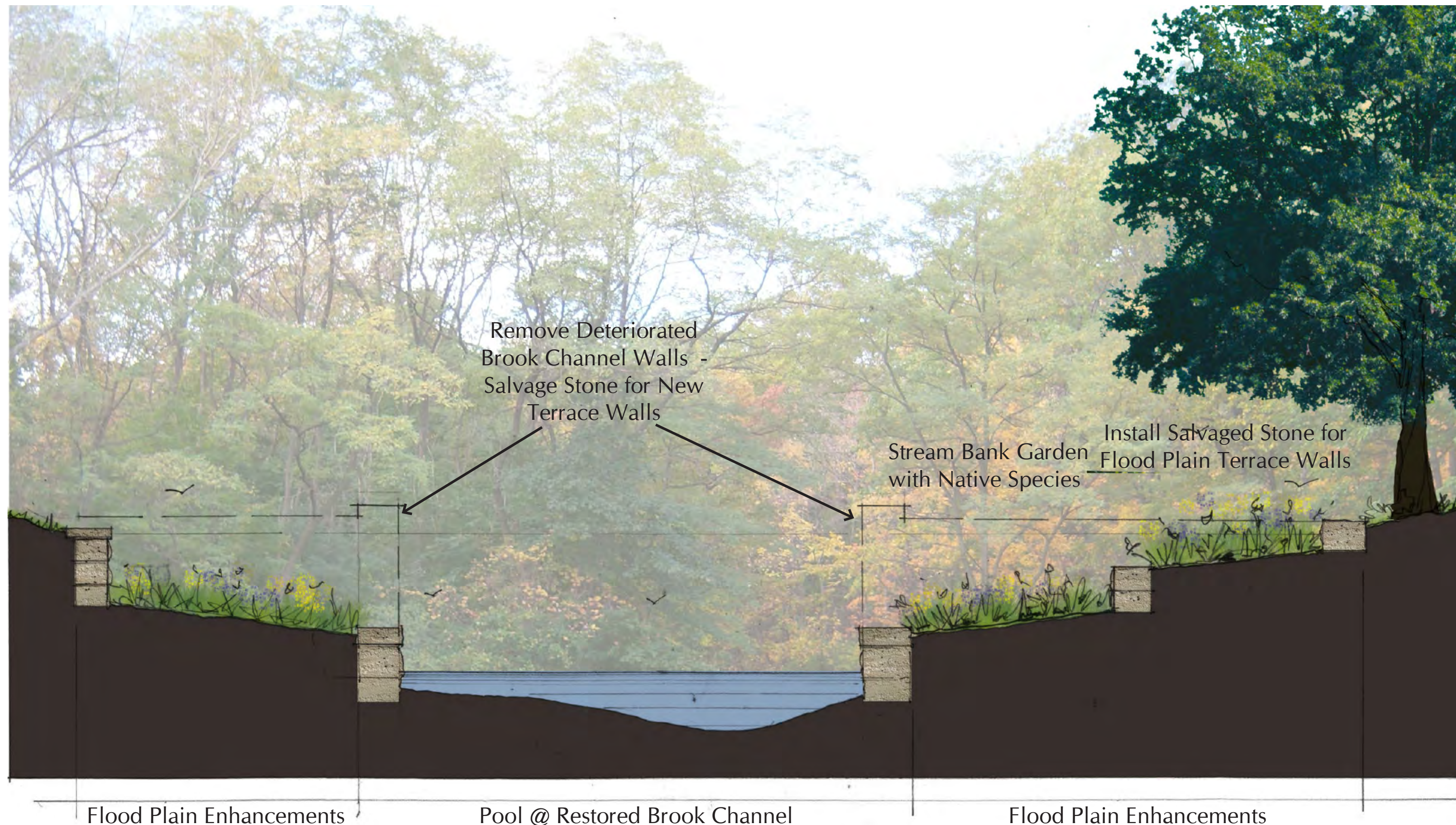
REACH # 4
MLK to Wade Park Blvd
950 ft

SE-4



Legend

- Proposed Channel Alignment
- Riparian Plantings Enhancement
- Flood Plain Enhancement
- Steep Bank Repair / Protection
- Contributing Walls Repair / Remaining
- Pools
- Riffles
- Channel Walls
- Floodplain Walls



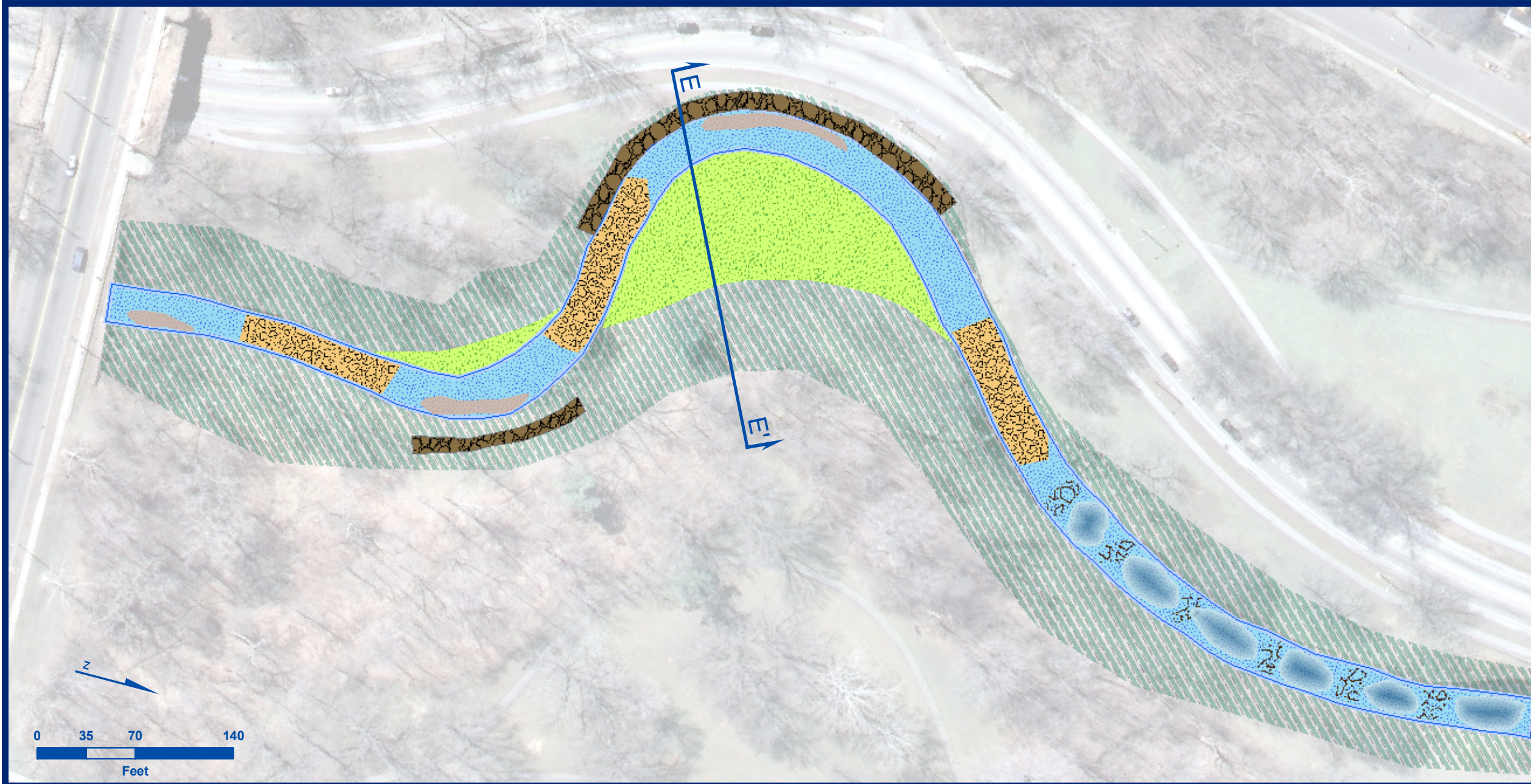
design: Link/Zaharija
mapping: Jira

date: November 2009

Doan Brook Enhancement

REACH # 5
Wade Park Blvd to Old Bridge Abutment
1200 ft

SE-5



Legend

- Step
- Pool
- Contributing Walls Repair / Remaining
- Pools
- Riffles
- Proposed Channel Alignment
- Flood Plain Enhancement
- Steep Bank Repair / Protection
- Riparian Plantings Enhancement

SECTION E
Doan Brook Enhancements



SECTION E

Doan Brook Enhancements