

March 28, 2011

Name  
Association  
Street Address  
City, State Zip

Re: Doan Brook Enhancement Project  
30% Design Stakeholder Review Meeting

Dear XXXXX:

In January, the Northeast Ohio Regional Sewer District introduced the new Doan Brook Enhancement Project to you by conducting a Pre-Design meeting with project stakeholders. The focus of the meeting was to discuss the new project's goals and to gain valuable input for the project. Since then, the District has completed the 30% Design of the Doan Brook Enhancement Project. At this time, the District would like you to join us for a second stakeholder meeting:

**What:** Doan Brook 30% Design Stakeholder Review Meeting  
**Date:** April 19, 2011  
**Location:** Judson Manor Meeting Room, 1890 E. 107th Street, Cleveland  
**Time:** 6:30 p.m. to 8:00 p.m.

This meeting is an opportunity for you to learn more about the progress of the design and to share your ideas with the design team. Representatives from the District and the design team and Section 106 consultants will be on hand to share the vision of the Doan Brook Enhancement Project, describe the status of the project and collect your creative input on the project.

The Doan Brook Enhancement Project is required mitigation for the Federal Aviation Administration (FAA) airport expansion project at the Cleveland Hopkins International Airport. The permits associated with the airport project require that this project comply with Section 106 of the National Historic Preservation Act of 1966. Accordingly, the design process must ensure that historic resources – the distinctive manmade and natural features of Rockefeller Park Historic District – are preserved to the greatest extent possible, for the benefit and enjoyment of Cleveland's residents. On behalf of the FAA, the District is facilitating the Section 106 process which includes analysis of the design and the conduct of stakeholder meetings.

The District appreciates your interest in this project and looks forward to seeing you at the meeting. Please contact Nicole Velez at 216.881.6600 or [VeleznN@neorsd.org](mailto:VeleznN@neorsd.org) to confirm your attendance.

Sincerely,

Kellie C. Rotunno, P.E., BCEE  
Director of Engineering and Construction



A black and white photograph of a park-like setting. In the foreground, there is a stone wall or retaining wall, possibly made of stacked stones or bricks, with some vegetation growing around it. The wall appears to be part of a larger structure, perhaps a bridge or a path. In the background, there are many trees, mostly deciduous, with dense foliage. The ground is covered with grass and some low-lying plants. The overall scene is a natural, wooded area.

# Doan Brook Enhancement Project

30% Conceptual Design  
Meeting

May 24, 2011



# Current Doan Brook Enhancement Project

- **May 2009:** *New Ohio EPA Findings and Orders*
  - ✓ Issued to City of Cleveland, Department of Port Control
  - ✓ \$2.5M investment in ecological enhancement of Doan Brook.
- **November 2009:** *Memorandum of Understanding*
  - ✓ NEORSD to act as City's agent in overseeing revised Doan Brook project planning, design, and construction.
- **November 2009:** *Doan Brook Enhancement Project Conceptual Plan Submitted to Ohio EPA*
- **January 2010:** *Conceptual Plan Approved by Ohio EPA*
- **June 2010:** *Section 106 Consultant Hired*
- **October 2010:** *Design Consultant Hired*
- **January 2011:** *Pre-Design Meeting*
- **May 2011:** *30% Conceptual Design Submittal*



# Doan Brook Enhancement Project Responsibility

- City of Cleveland is the project owner
- NEORSD will manage the project design and construction process
- The FAA will be the lead Federal Agency for the Section 106 process





# Doan Brook Enhancement Project Goals

- Improve aquatic habitat in restored areas
- Provide for better control of stream flows
- Provide for some floodplain relief where possible
- Improve and enhance riparian vegetative cover
- Provide limited removal of invasive plant species
- Provide for some limited access to the brook
- Satisfy Ohio EPA Findings & Orders





# Doan Brook Stream Enhancement Project – 30% Conceptual Design





# Doan Brook Stream Enhancement Project

## Fundamental Goals and Objectives of 30% Conceptual Design:

### Environment

- Environmental and water quality impacts.
- Riparian Habitat Improvements.
- Flood risk impacts, control flows.

### Economic

- Constructability
- Utility issues.
- Permitting.
- Costs – capital /operation/maintenance.

### Social

- Context sensitive design and community acceptance.
- Provide opportunities for park users access.



# Doan Brook Enhancement Project Coordination

- Section 106
- Stakeholder Involvement
- Design Elements



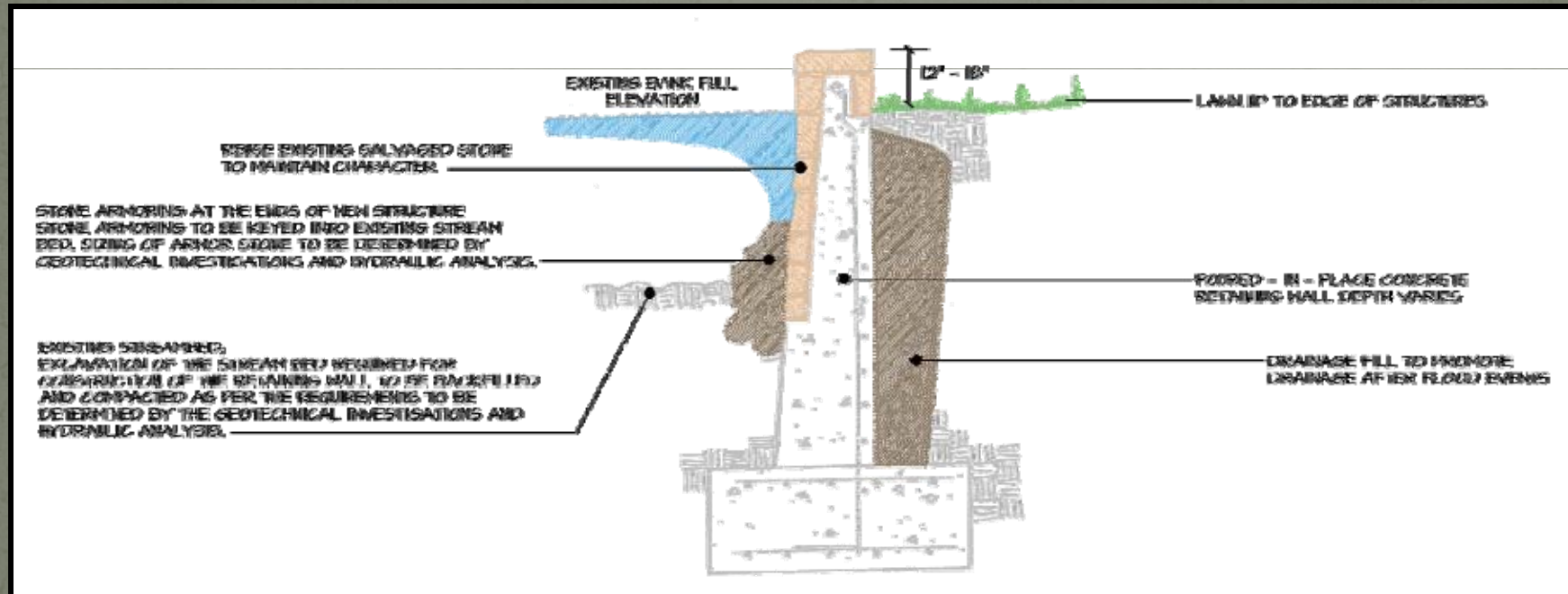
# Doan Brook Enhancement Project

## 30% Conceptual Design Initiatives

- Structural Elements
- Managed Enhancements
- Naturalized Enhancements



# Doan Brook Enhancement Project Structural Elements

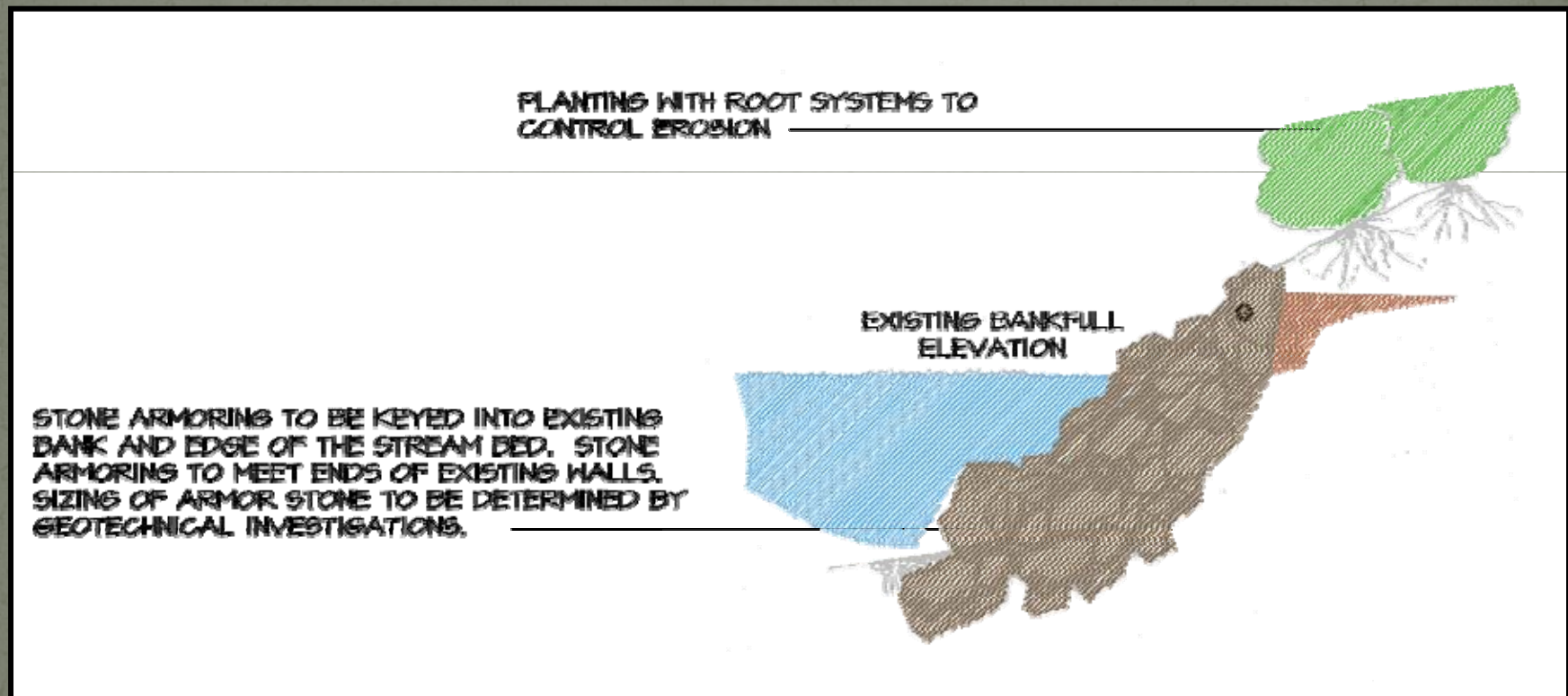


Concrete Retaining Wall w/Stone Facing



# Doan Brook Enhancement Project

## Structural Elements

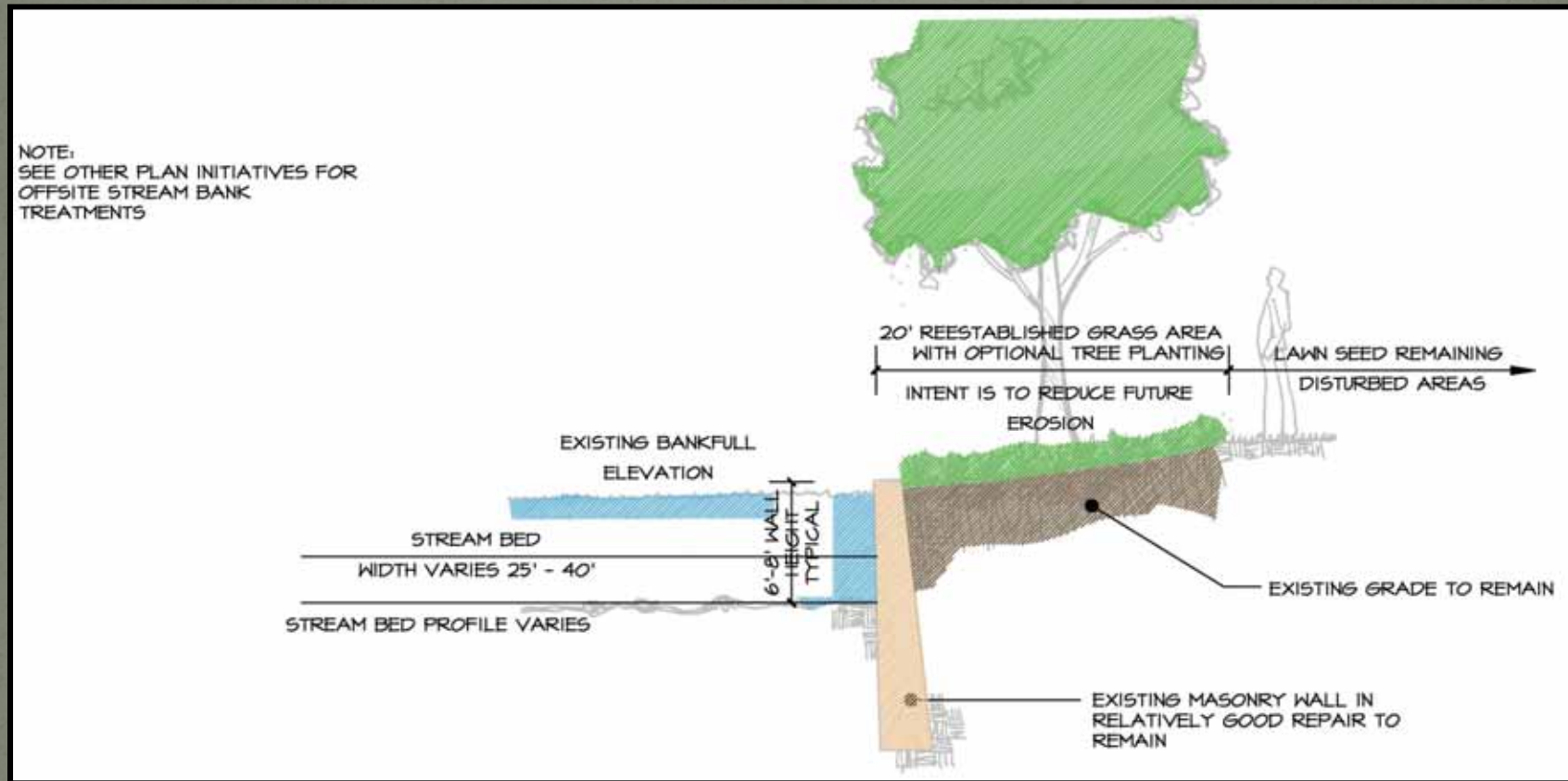


Stone Armoring w/Vegetation



# Doan Brook Enhancement Project

## Managed Enhancements

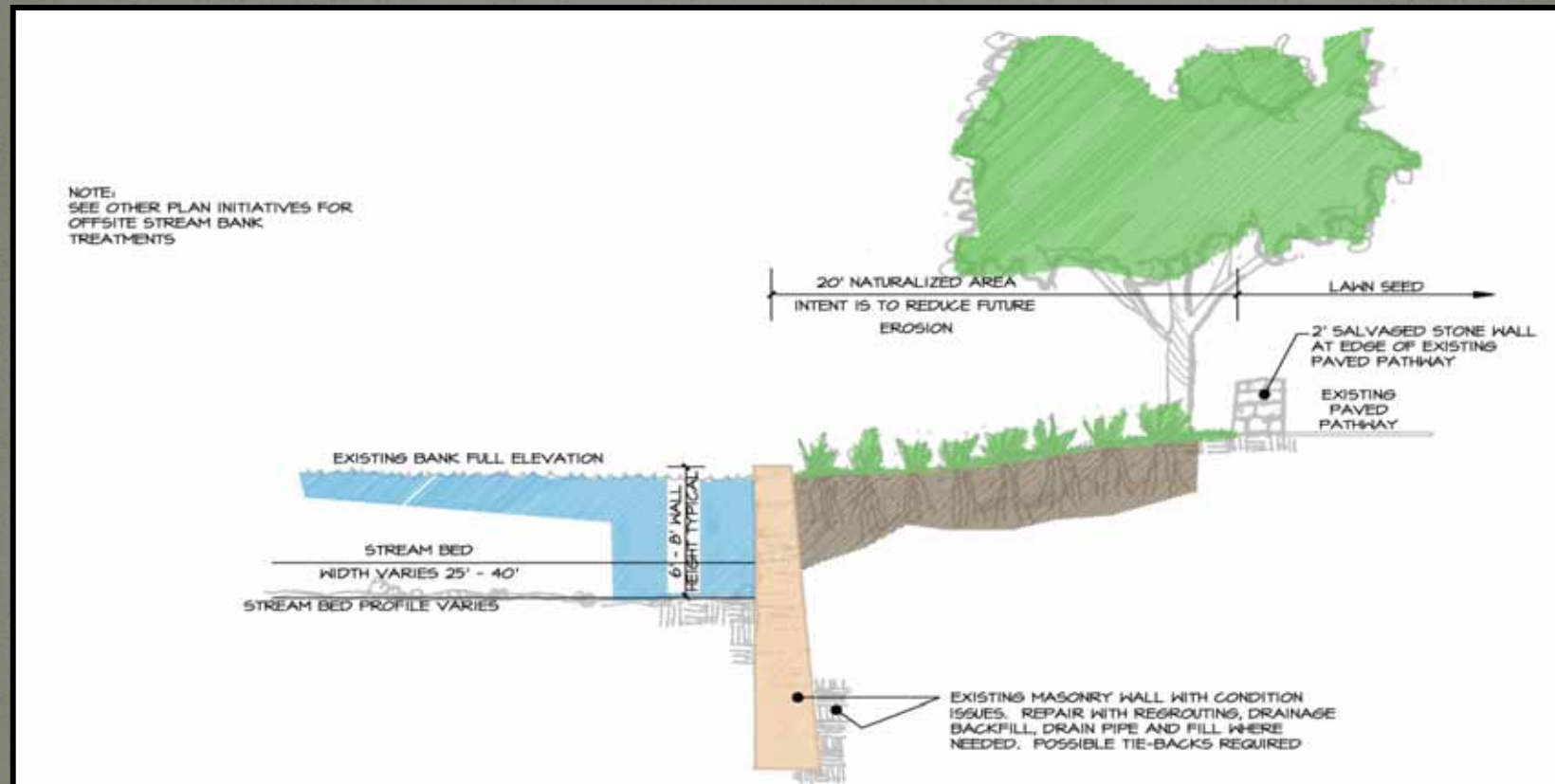


Retain Existing Wall



# Doan Brook Enhancement Project

## Managed Enhancements

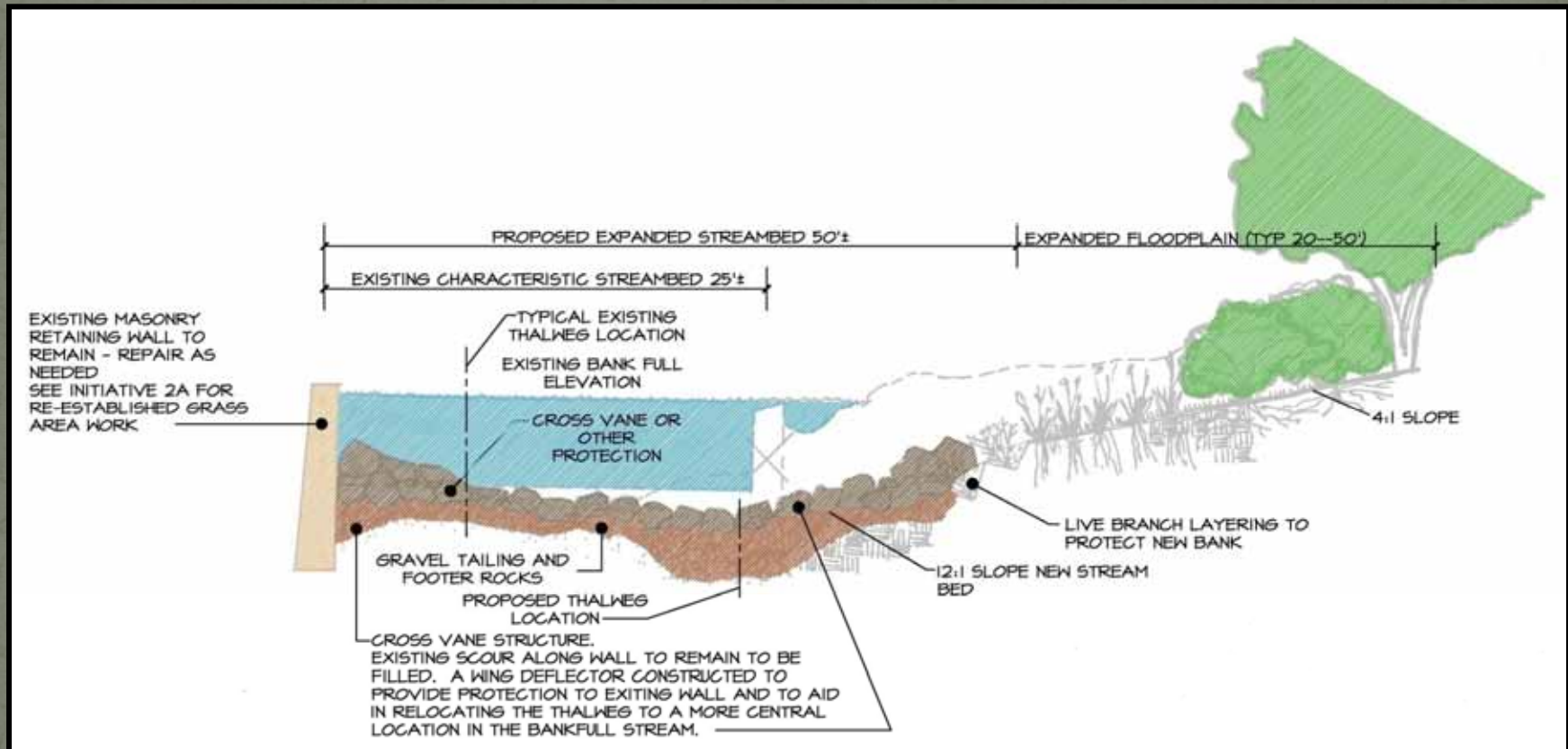


Retain Existing Wall with Some  
Restoration and Backfill



# Doan Brook Enhancement Project

## Naturalized Enhancements

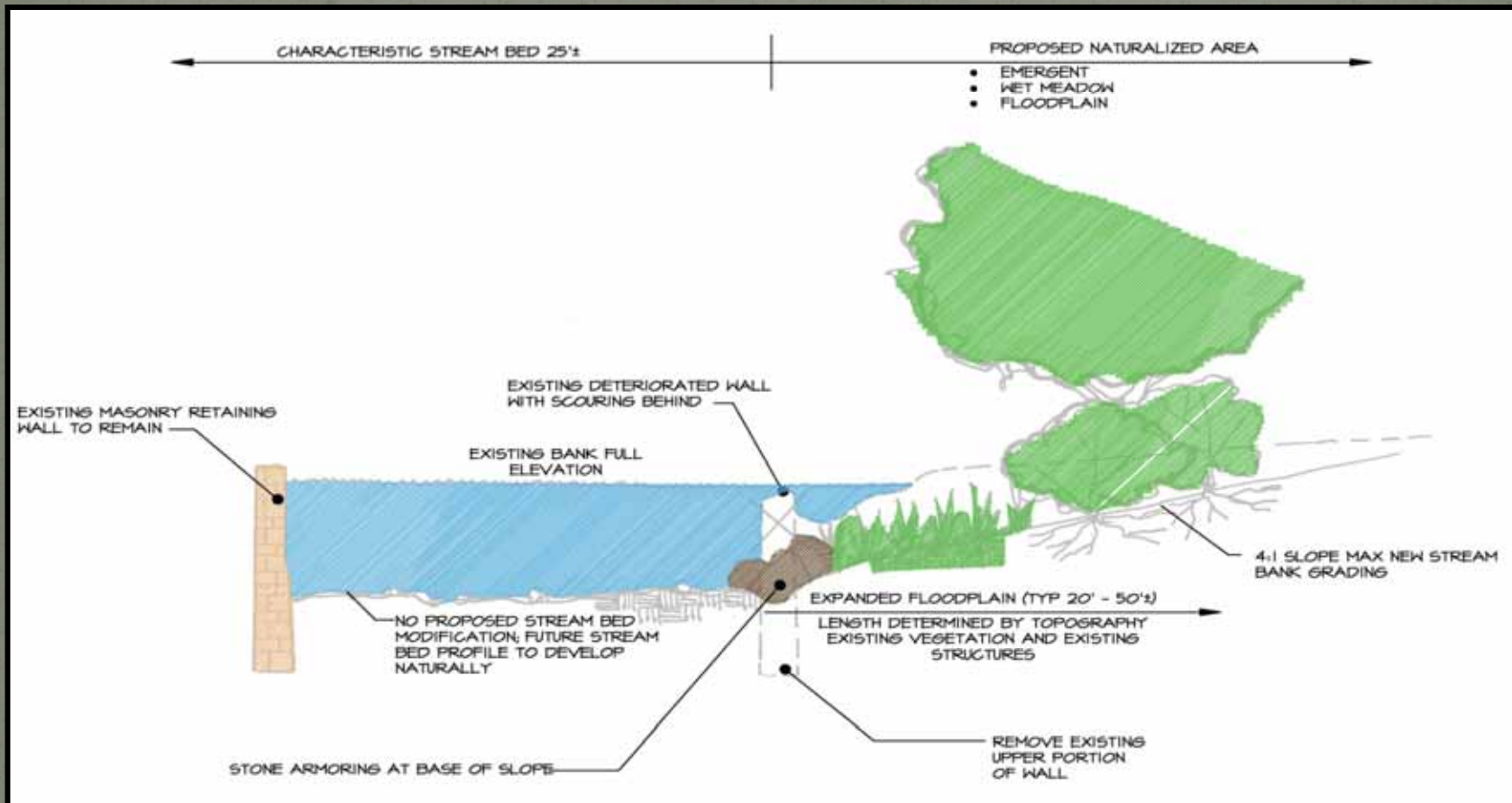


Wall Removed and Streambed Improvements



# Doan Brook Enhancement Project

## Naturalized Enhancements

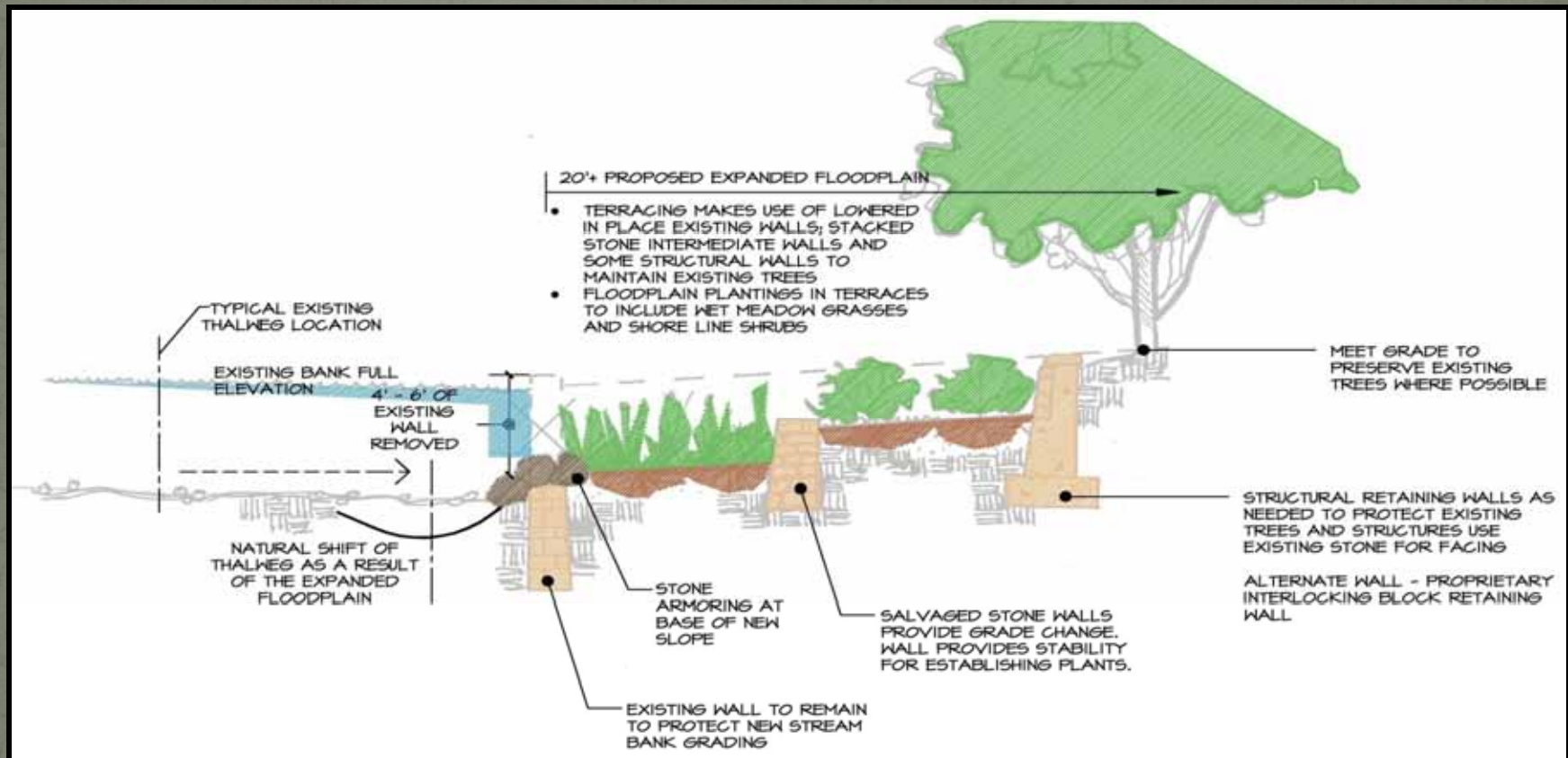


Wall Removed with Stream Bank Improvements



# Doan Brook Enhancement Project

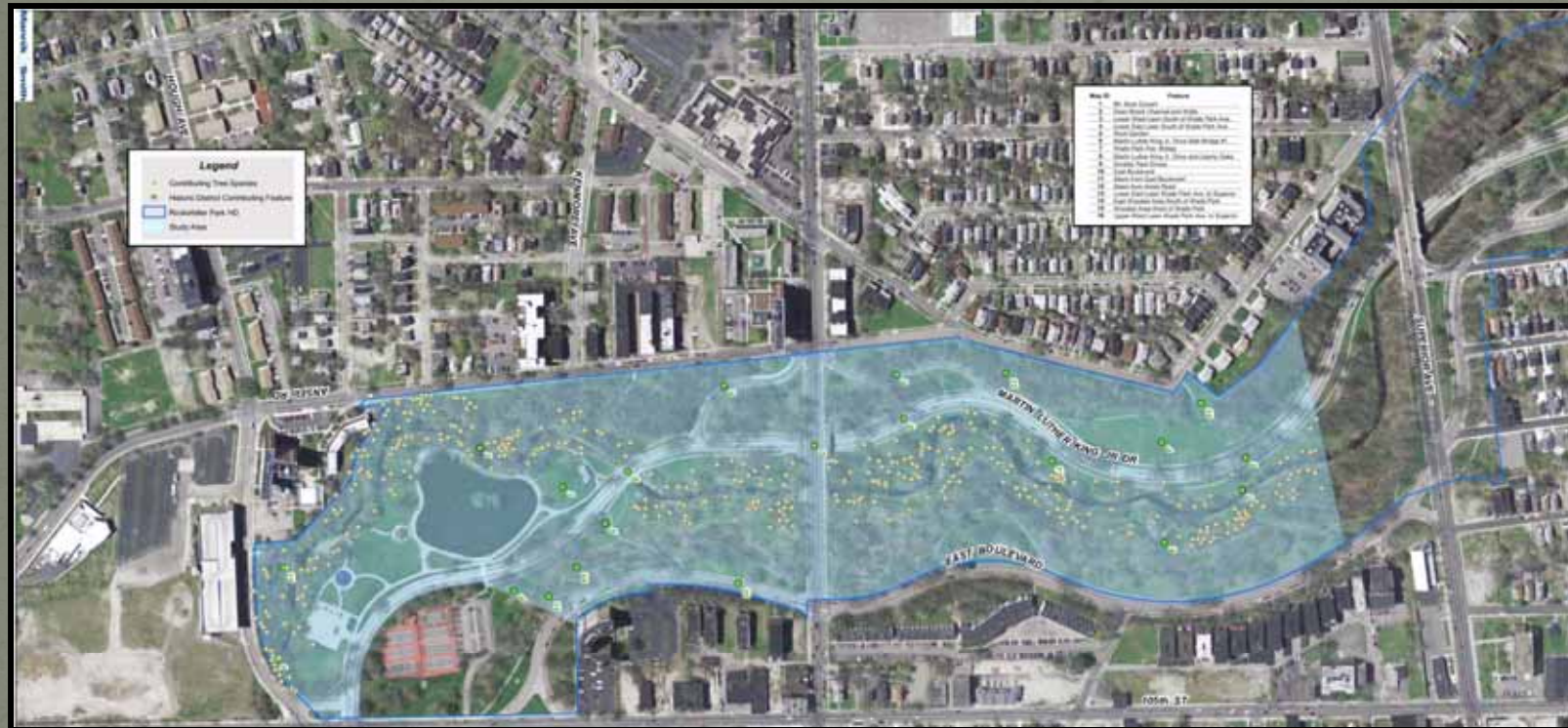
## Naturalized Enhancements



Portion of Wall Removed, Terracing w/Stone and Construction of Secondary Walls



# Contributing Elements





# Contributing Elements List

<u>Map ID</u>	<u>Feature</u>
1	Mt. Sinai Culvert
2	Doan Brook Channel and Walls
3	Lower West Lawn South of Wade Park Ave.
4	Lower East Lawn South of Wade Park Ave.
5	Rock Garden
6	Martin Luther King Jr. Drive Slab Bridge #1
7	Wade Park Ave. Bridge
8	Martin Luther King Jr. Drive and Liberty Oaks
9	Smaller Park Drives
10	East Boulevard
11	Stairs from East Boulevard
12	Stairs from Ansel Road
13	Lower East Lawn Wade Park Ave. to Superior
14	East Wooded Area South of Wade Park
15	Wooded Area West of Wade Park
16	Upper West Lawn Wade Park Ave. to Superior



# Contributing Trees - Reach 2





# Contributing Trees - Reach 3





# Contributing Trees - Reach 4





# Contributing Trees - Reach 5





# Veterans Trees





# Summary of Contributing Elements, Impacts and Project Improvement Costs

<u>Reach 2</u>	<u>Reach 3</u>	<u>Reach 4</u>	<u>Reach 5</u>
18 Contributing Trees	30 Contributing Trees	60 Contributing Trees	80 Contributing Trees
900 feet of Contributing Walls •600 feet Poor Condition •300 feet Failed Walls	800 feet of Contributing Walls •300 feet Fair Condition •300 feet Poor Condition •200 feet Failed Walls	600 feet of Contributing Walls •500 feet Fair Condition •100 feet Poor Condition	2,000 feet of Contributing Walls •1,500 feet Fair Condition •300 feet Poor Condition •200 feet Failed Walls
\$ 1,250,000	\$ 700,000	\$ 400,000	\$ 2,000,000

# Summary of Contributing Elements and Project Improvement Costs

<u>Reach 2</u>	<u>Reach 3</u>	<u>Reach 4</u>	<u>Reach 5</u>
18 Contributing Trees	30 Contributing Trees	60 Contributing Trees	80 Contributing Trees
900 feet of Contributing Walls •600 feet Poor Condition •300 feet Failed Walls	800 feet of Contributing Walls •300 feet Fair Condition •300 feet Poor Condition •200 feet Failed Walls	600 feet of Contributing Walls •500 feet Fair Condition •100 feet Poor Condition	2,000 feet of Contributing Walls •1,500 feet Fair Condition •300 feet Poor Condition •200 feet Failed Walls
\$ 1,250,000	\$ 700,000	\$ 400,000	\$ 2,000,000

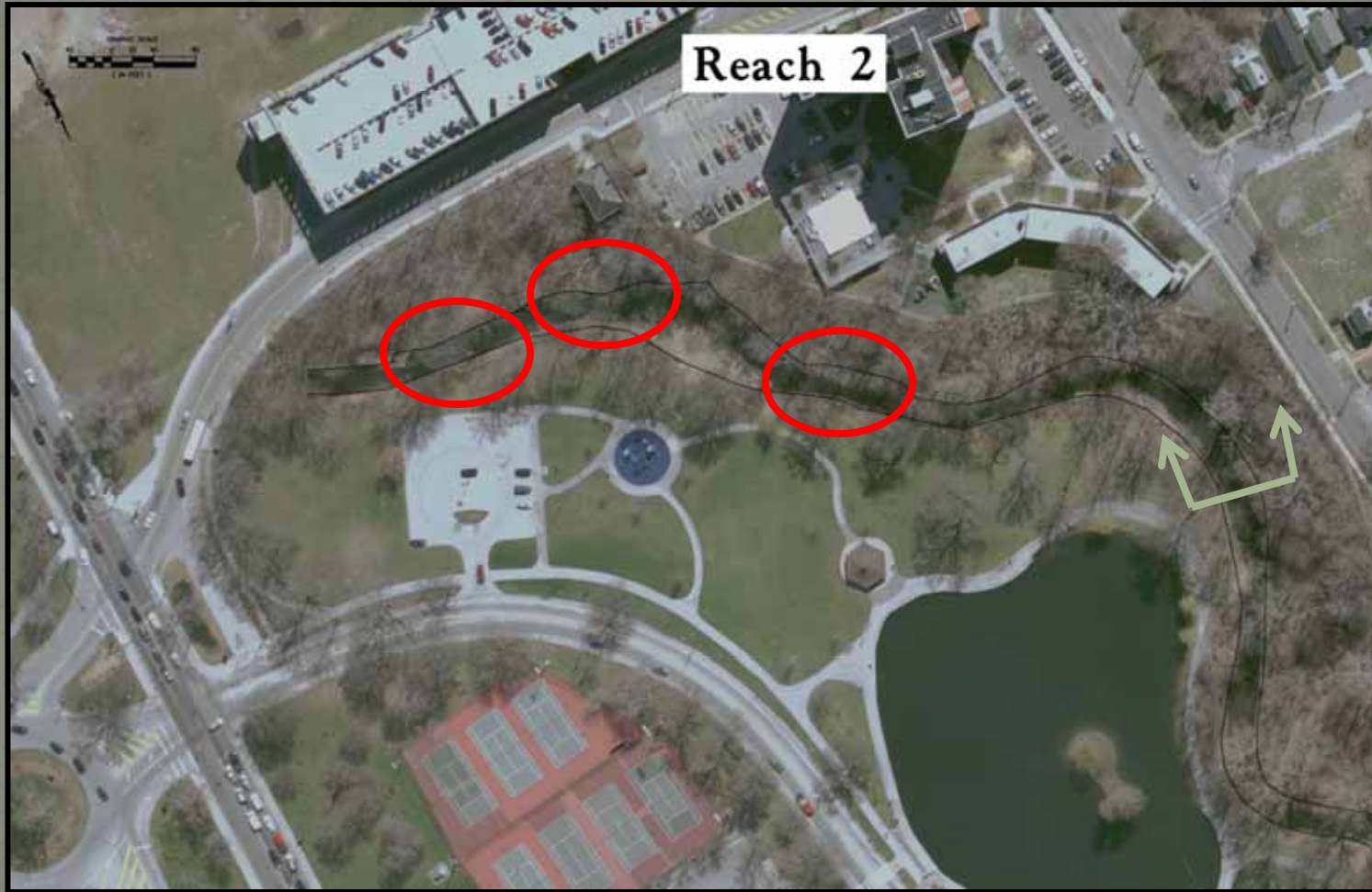


# Reach 2





# Reach 2





# Reach 2





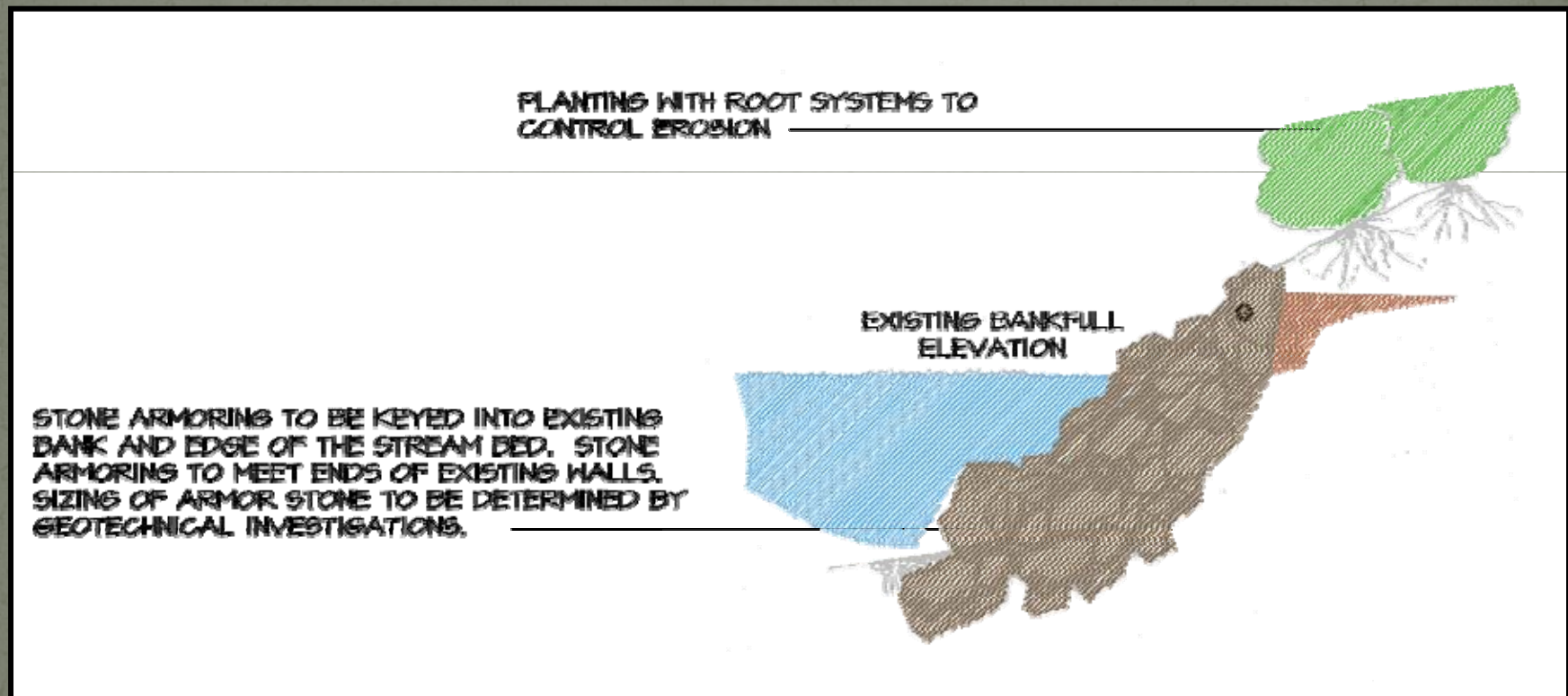
# Reach 2





# Doan Brook Enhancement Project

## Structural Elements



Stone Armoring w/Vegetation



# Doan Brook Enhancement Project Structural Elements



Stone Armoring w/Vegetation



# Doan Brook Enhancement Project Structural Elements



Stone Armoring w/Vegetation



# Doan Brook Enhancement Project Structural Elements



Stone Armoring w/Vegetation



# Doan Brook Enhancement Project Structural Elements



Stone Armoring w/Vegetation



# Doan Brook Enhancement Project Structural Elements



Streambed Improvements



# Reach 2





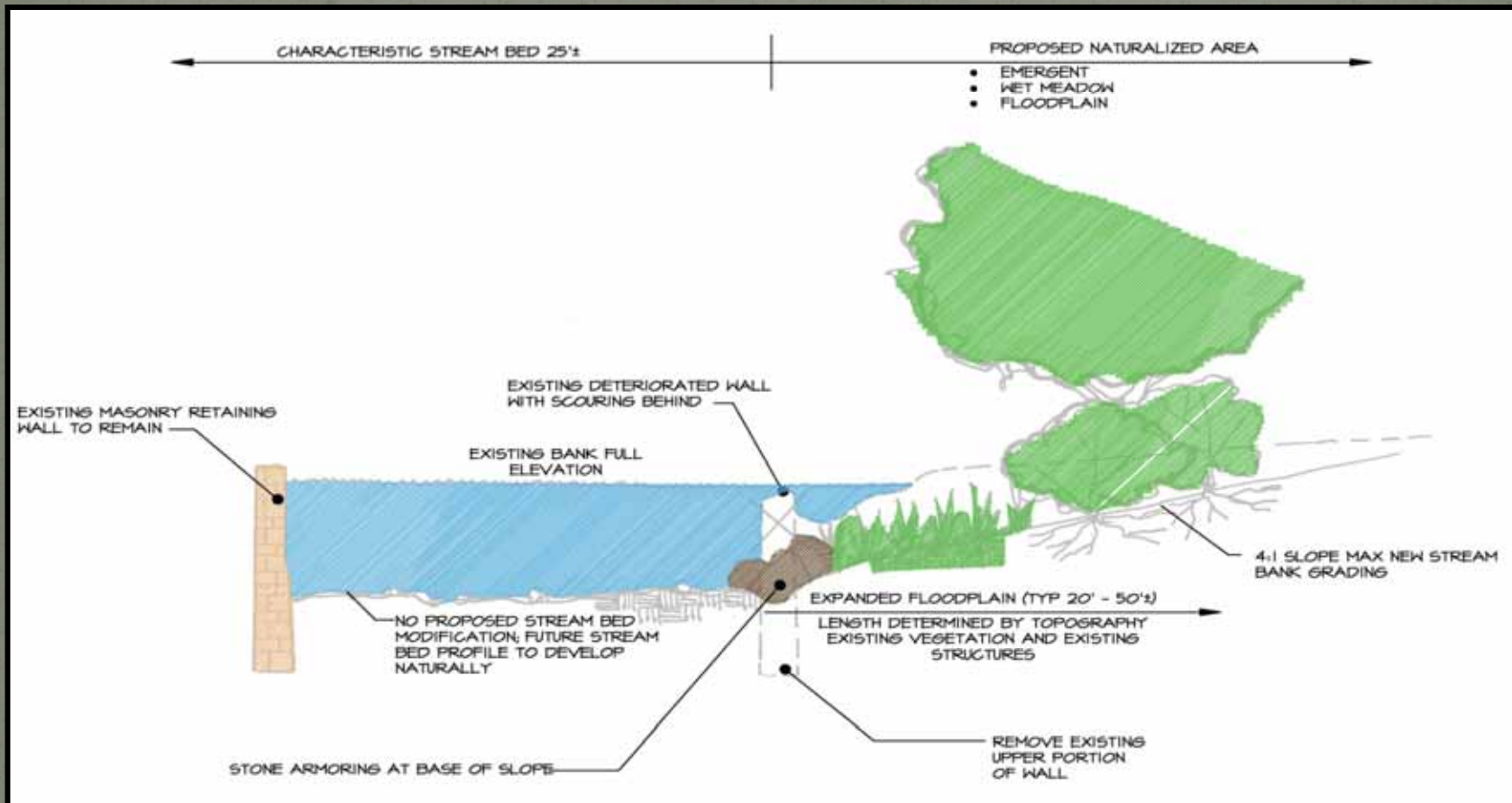
## Reach 2





# Doan Brook Enhancement Project

## Naturalized Enhancements



Wall Removed with Stream Bank Improvements



# Doan Brook Enhancement Project Structural Elements



Streambed Improvements



# Doan Brook Enhancement Project

## Naturalized Enhancement



Wall Removed with Stream Bank Improvements



# Reach 2





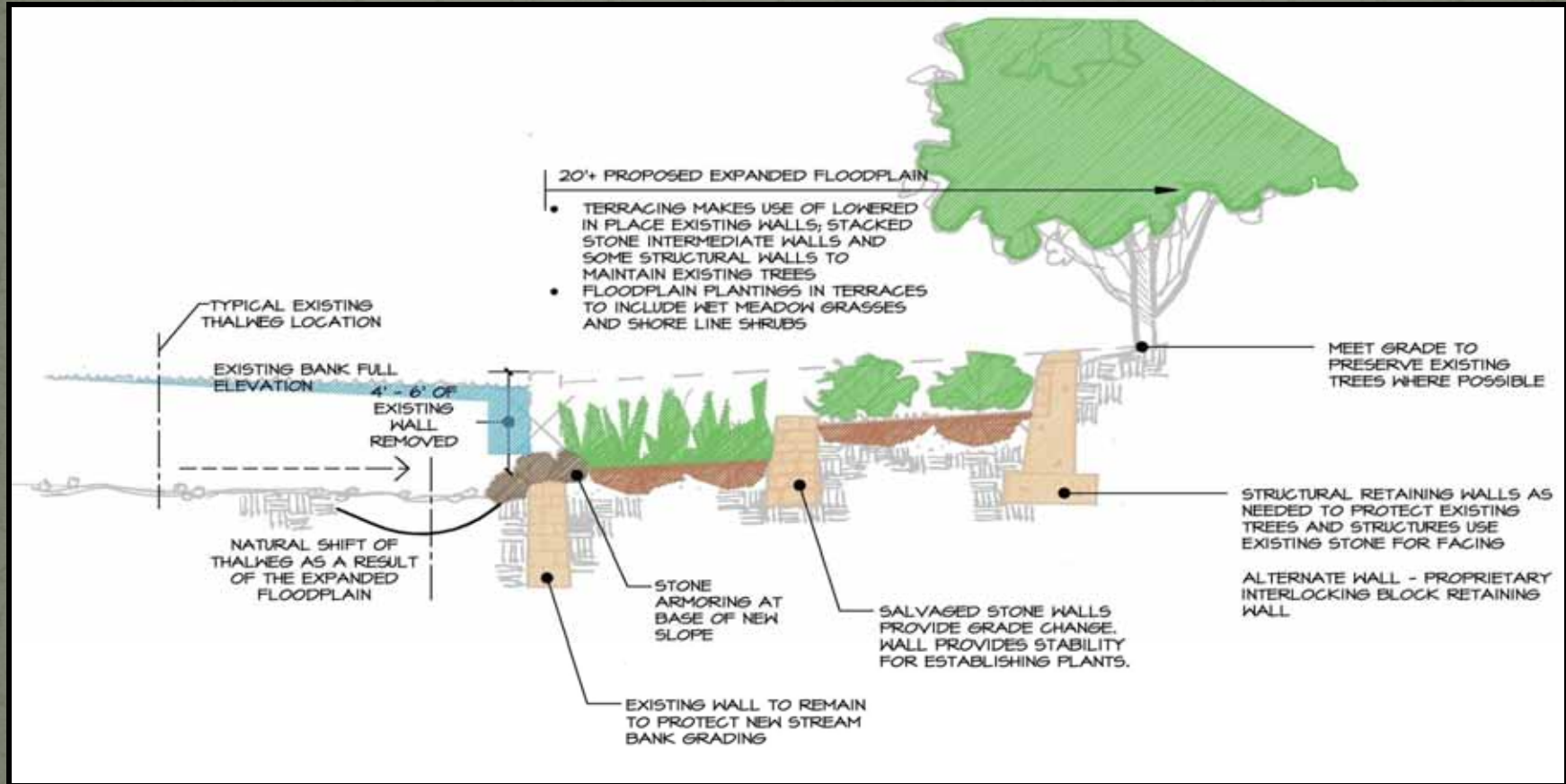
# Reach 2





# Doan Brook Enhancement Project

## Naturalized Enhancements



Portion of Wall Removed, Terracing w/Stone and Construction of Secondary Walls



# Doan Brook Enhancement Project

## Naturalized Enhancement

- Anticipated look/Photo enhancement in process

Portion of Wall Removed, Terracing w/Stone and  
Construction of Secondary Walls



# Reach 3





# Reach 3





# Reach 3





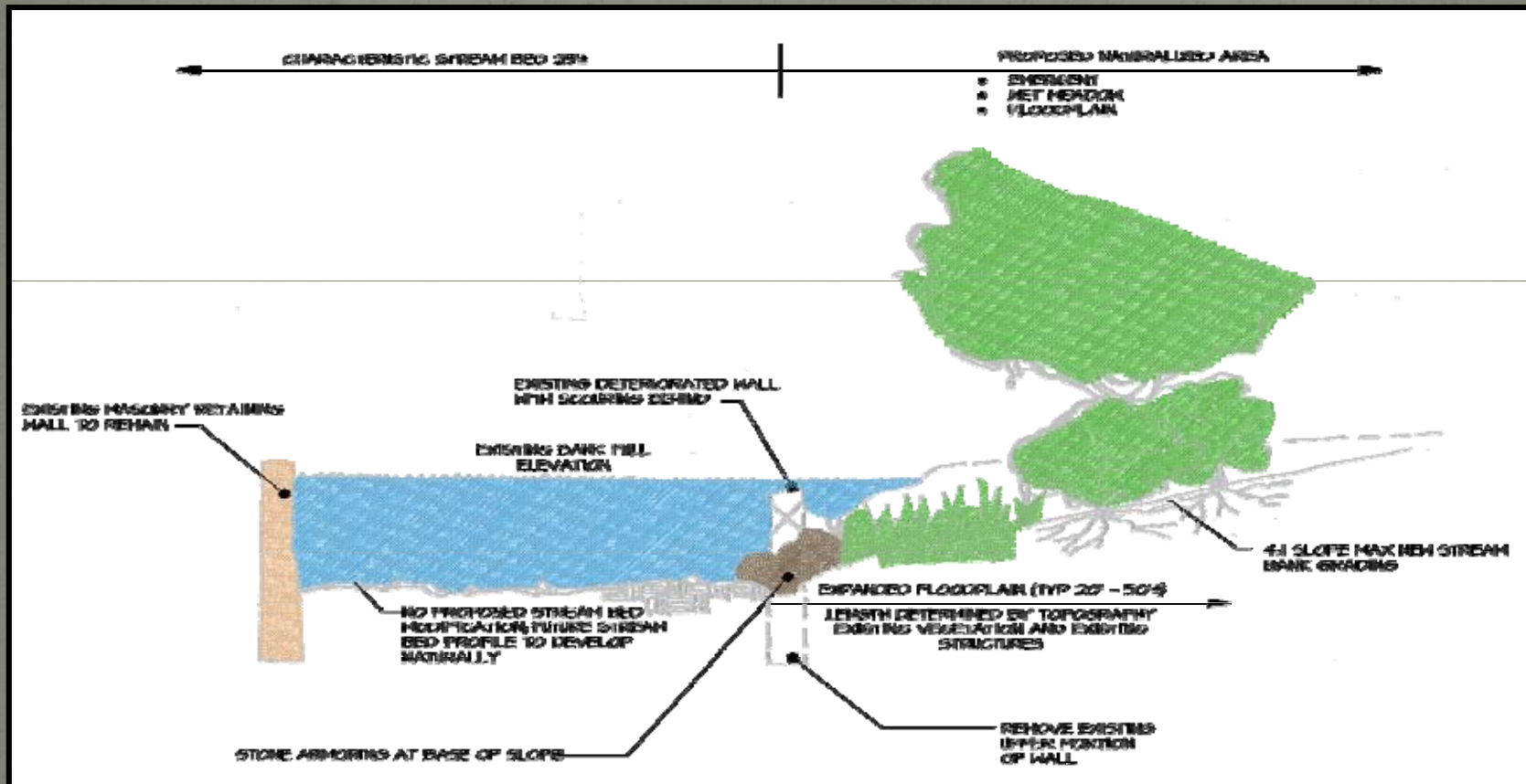
# Reach 3





# Doan Brook Enhancement Project

## Managed Enhancements



Wall Removed with Stream Bank Improvements



# Doan Brook Enhancement Project Managed Enhancements



Wall Removed with Stream Bank Improvements



# Reach 3





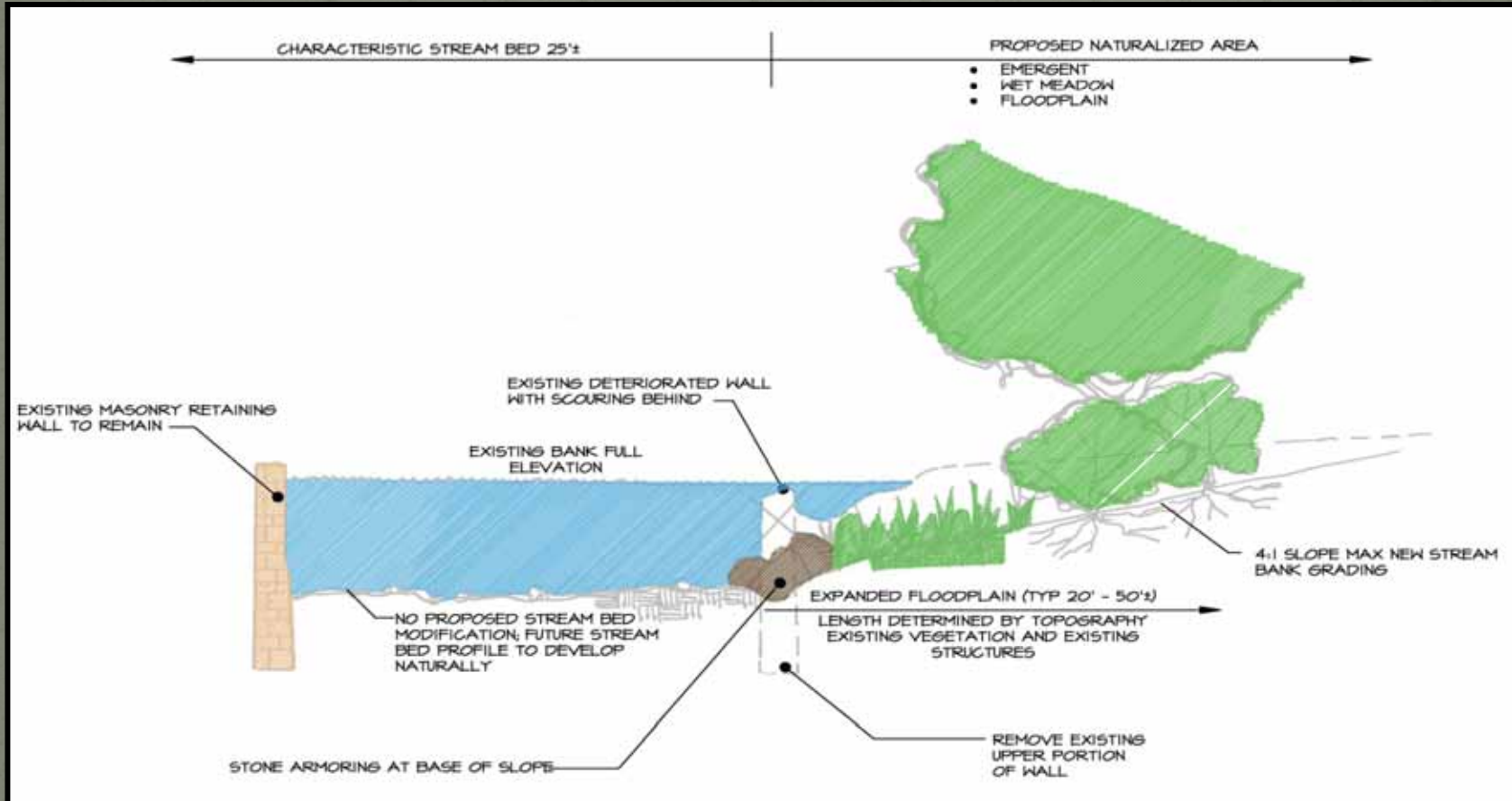
# Reach 3





# Doan Brook Enhancement Project

## Naturalized Enhancements



Wall Removed with Stream Bank Improvements



# Doan Brook Enhancement Project Naturalized Enhancement



Wall Removed with Stream Bank Improvements



# Doan Brook Enhancement Project

## Naturalized Enhancement



Wall Removed with Stream Bank Improvements



# Doan Brook Enhancement Project

## Naturalized Enhancement



Wall Removed with Stream Bank Improvements



# Reach 4





# Reach 4



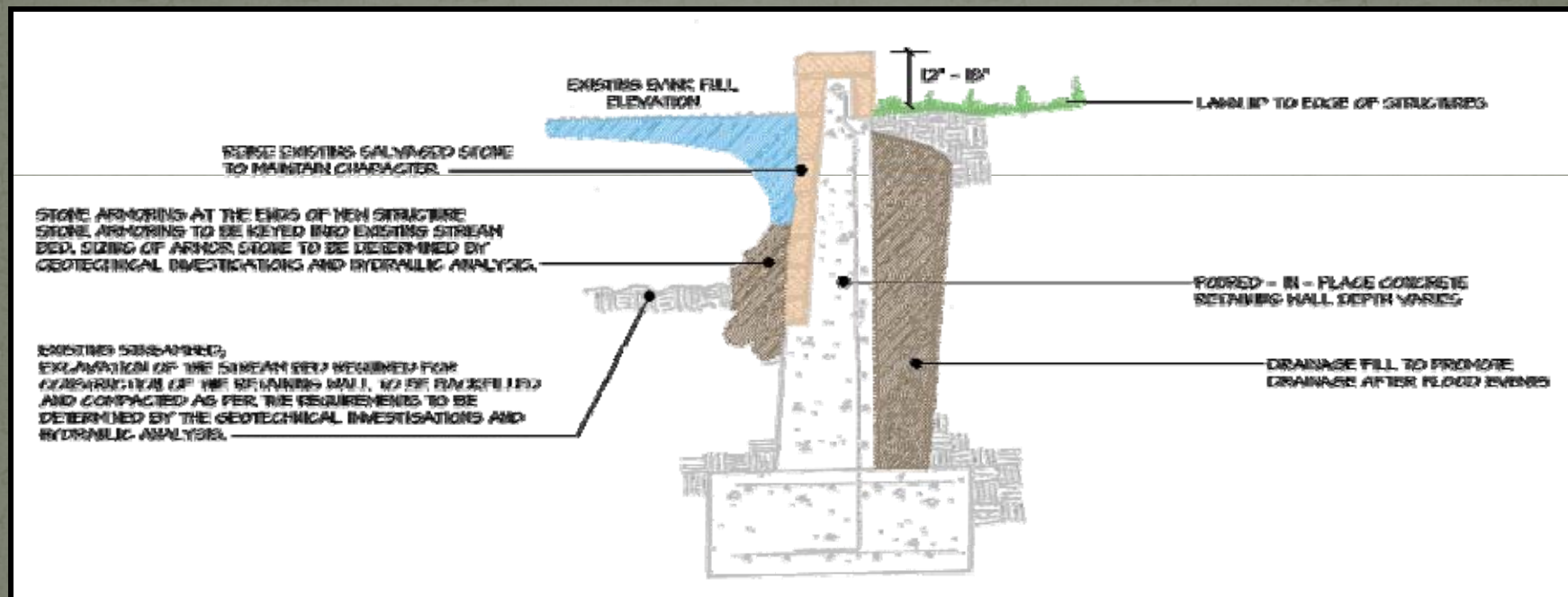


# Reach 4





# Doan Brook Enhancement Project Structural Elements

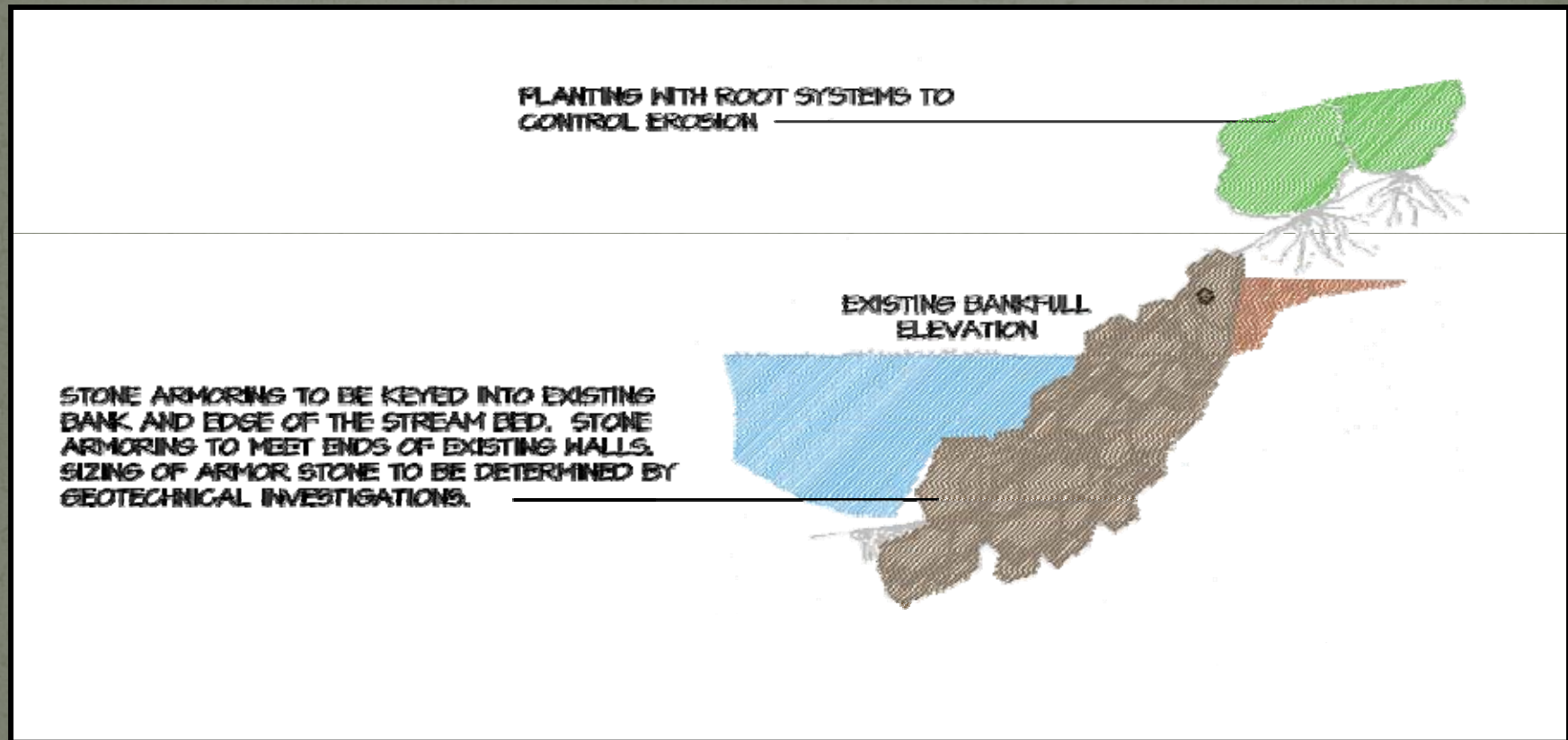


Concrete Retaining Wall w/Stone Facing



# Doan Brook Enhancement Project

## Structural Elements



Stone Armoring w/Vegetation



# Doan Brook Enhancement Project Structural Elements



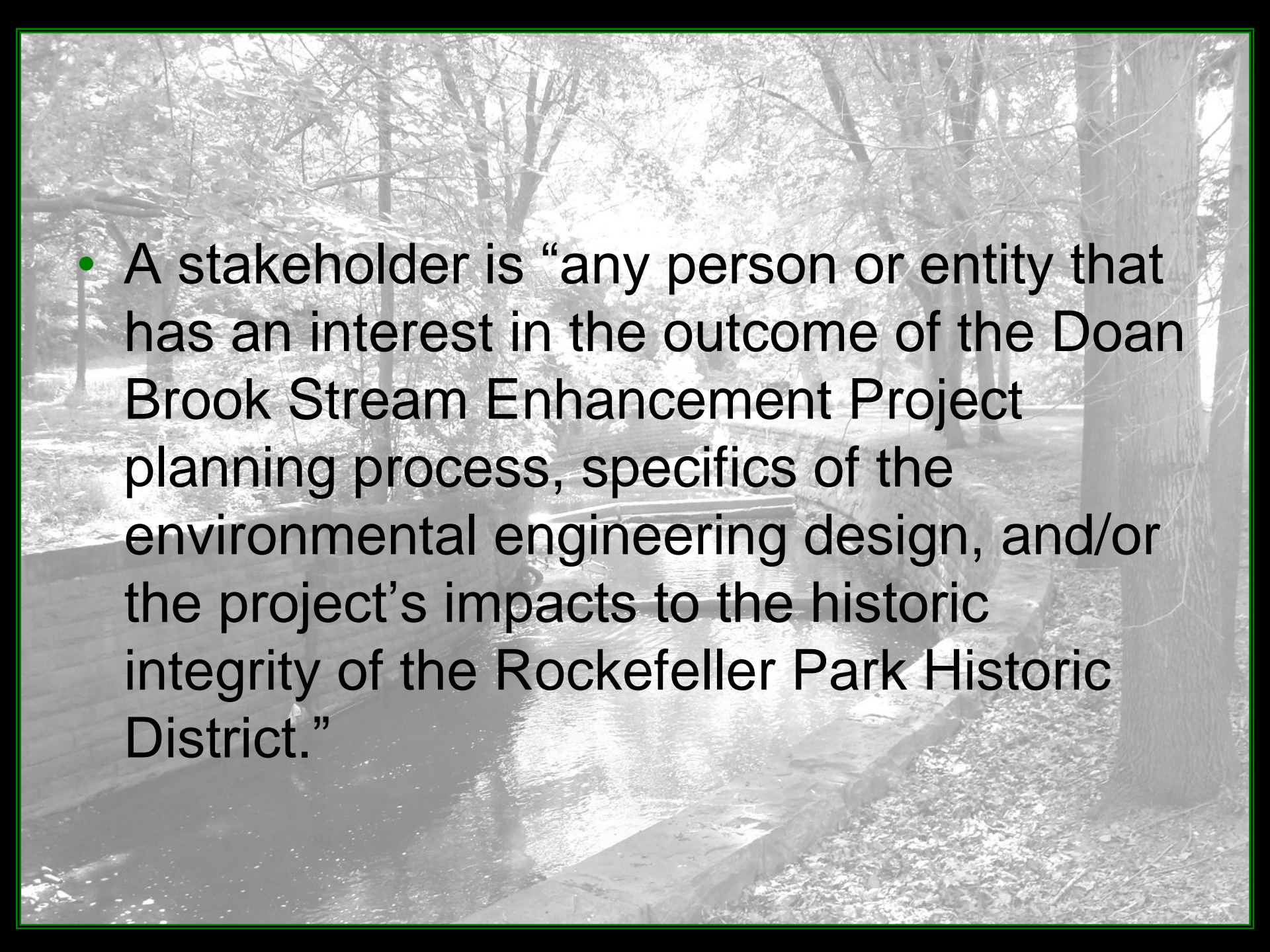
Stone Armoring w/Vegetation



# **Stakeholder Involvement Plan**





- 
- A stakeholder is “any person or entity that has an interest in the outcome of the Doan Brook Stream Enhancement Project planning process, specifics of the environmental engineering design, and/or the project’s impacts to the historic integrity of the Rockefeller Park Historic District.”



# Ground Rules

- All input is valued and considered
- Open and honest participation
- Mutual respect
- List of stakeholders may change as events warrant
- Advisory role of stakeholders
- Record of meetings and contacts
- General public involvement
- Media involvement
- Goal is to develop a consensus plan



# Project Team



**Federal Aviation Administration**  
– Detroit Airports District Office



**City of Cleveland**  
– Office of the Mayor



**Stream Restoration Design**



**Section 106 Consultation &  
Stakeholder Involvement**



# Stakeholder List

<b>Advisory Council on Historic Preservation</b>	<b>Herrick Road Street Club</b>
<b>Case Western Reserve University</b>	<b>Holden Arboretum</b>
<b>City of Cleveland, Dept. of Parks, Recreation &amp; Properties</b>	<b>Joint Veterans Commission of Cuyahoga County (JVCOCC)</b>
<b>City of Cleveland, Office of the Mayor</b>	<b>Judson Manor</b>
<b>City of Cleveland, Water Pollution Control</b>	<b>McKnight &amp; Associates</b>
<b>Cleveland Cultural Gardens Federation</b>	<b>Neighborhood Progress, Inc.</b>
<b>Cleveland Hopkins Int'l Airport, Dept. of Port Control</b>	<b>NOACA</b>
<b>Cleveland Landmarks Commission</b>	<b>Ohio Environmental Protection Agency (OEPA)</b>
<b>Cleveland Restoration Society</b>	<b>Ohio Historic Preservation Office</b>
<b>Congressman 10th District of Ohio</b>	<b>Parkworks</b>
<b>Congresswoman, 11th District of Ohio</b>	<b>Ukrainian Community, Cleveland Cultural Gardens Fed.</b>
<b>Cuyahoga Planning Commission</b>	<b>University Circle Inc.</b>
<b>Cuyahoga Soil and Water Conservation District</b>	<b>USACOE, Buffalo District, Regulatory Branch</b>
<b>DBWP Lower Doan Citizens Representative</b>	<b>USACOE, Orwell Field Office, Regulatory Branch</b>
<b>Famicos Foundation</b>	<b>Ward 8 Cleveland City Council</b>
<b>Federal Aviation Administration</b>	<b>Ward 9 Cleveland City Council</b>
<b>Green City Blue Lake Institute</b>	<b>Western Reserve Historical Society</b>







