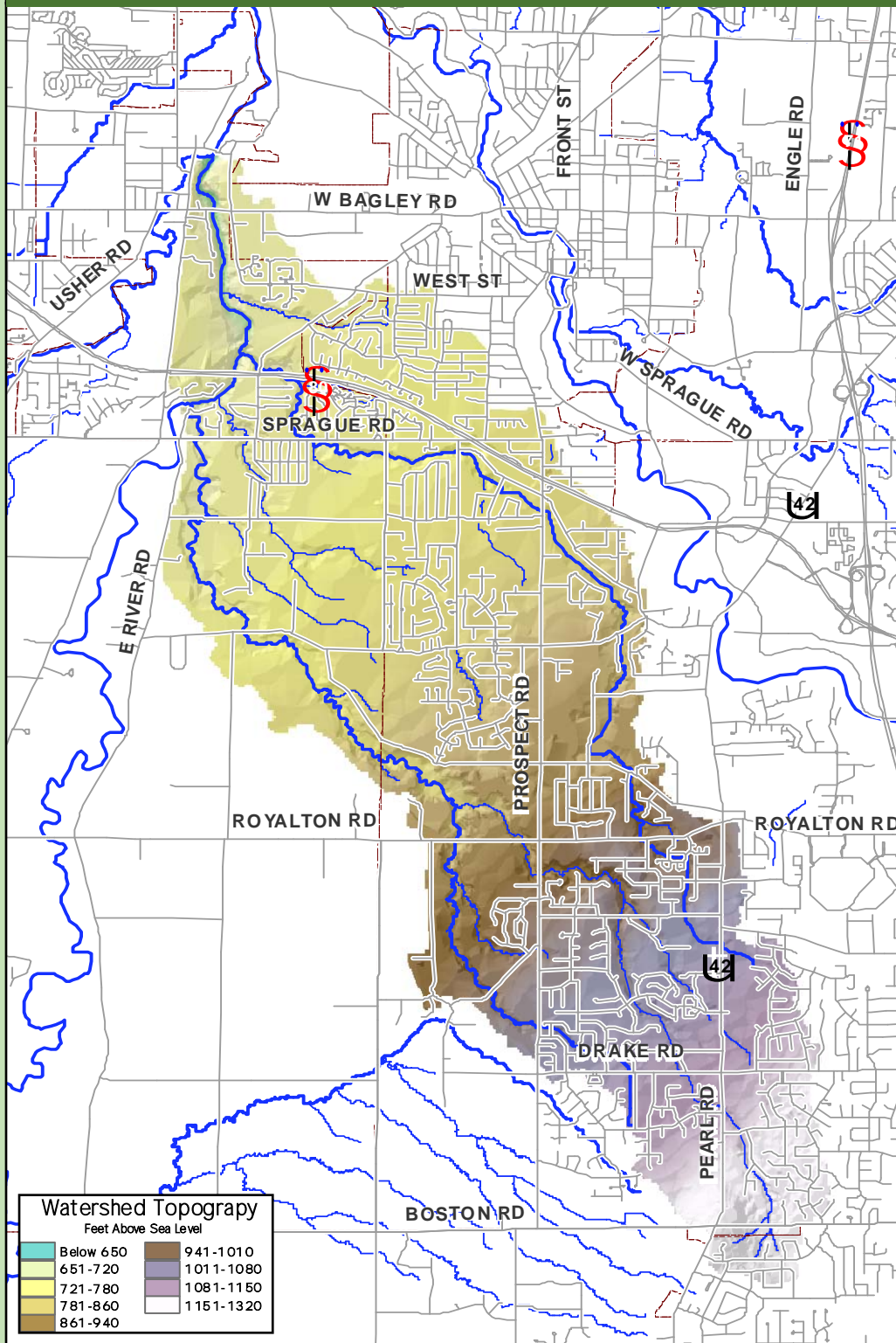
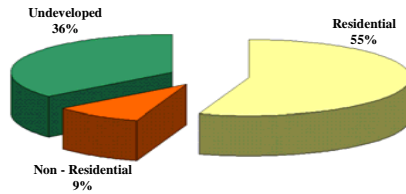


Topography Map

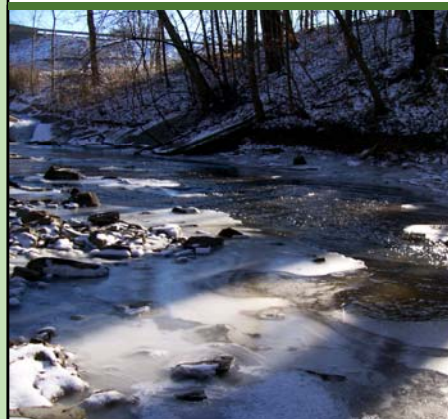


Land Cover / Land Use Statistics



At this time, approximately 64 % of the land within the Bakers Creek watershed has been developed. Medium-density residential housing occupies 55 % of the land, while another 9 % is used for commercial, industrial, or institutional purposes.

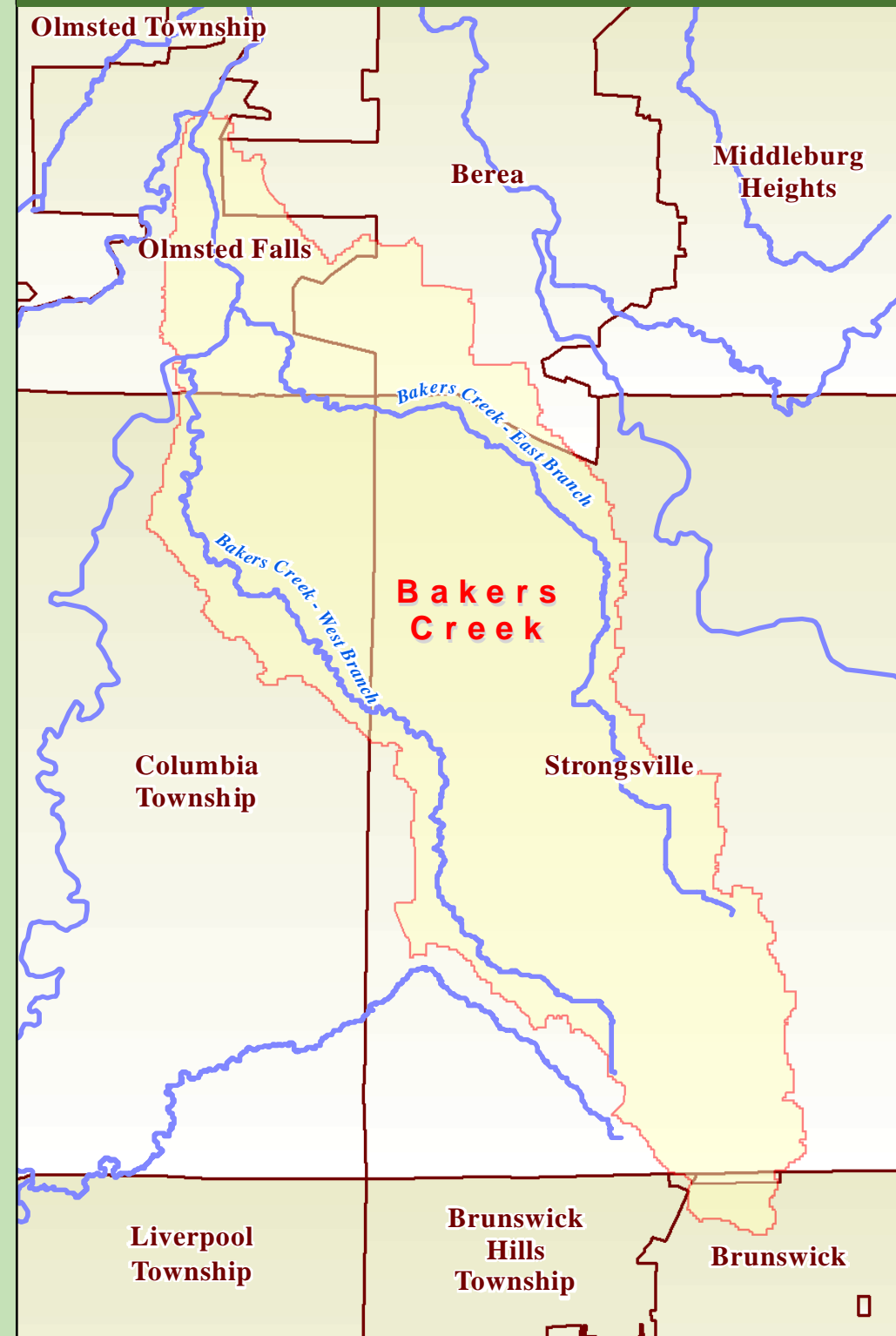
The remaining 36 % of the watershed is undeveloped. Undeveloped lands may include forested areas, open grass areas, ponds, or wetlands, and their uses may include agriculture or recreation.



Bakers Creek

Getting to Know the Bakers Creek Watershed

Community Map



Bakers Creek collects drainage from a 13.6 square-mile area, which includes portions of six communities, before joining the West Branch of the Rocky River...

Percentage of the Bakers Creek watershed located within each community

Berea	8.2%
Brunswick	1.2%
Brunswick Hills Twp.	0.3%
Columbia Township	17.7%
Olmsted Falls	10.6%
Strongsville	62.0%

The East and West Branches of Bakers Creek join the West Branch of the Rocky River in Olmsted Falls, at different locations.

The photographs show areas just upstream of the confluence points of each branch.



For More Information...



Print Date: Dec., 2005.

The Northeast Ohio Regional Sewer District has produced this watershed fact sheet using information gathered during the Regional Intercommunity Drainage Evaluation Study (RIDE Study). The purpose of this watershed fact sheet is to display planning-level data collected during the RIDE Study. The Northeast Ohio Regional Sewer District expressly disclaims any liability that may result from the use of the watershed fact sheets for any other purpose. For more information, please send all correspondence to the Northeast Ohio Regional Sewer District, 3900 Euclid Ave. Cleveland, OH 44115, Attn: Constance Haqq, Director of Communications & Community Relations, or contact our offices directly at (216) 881-6600.

