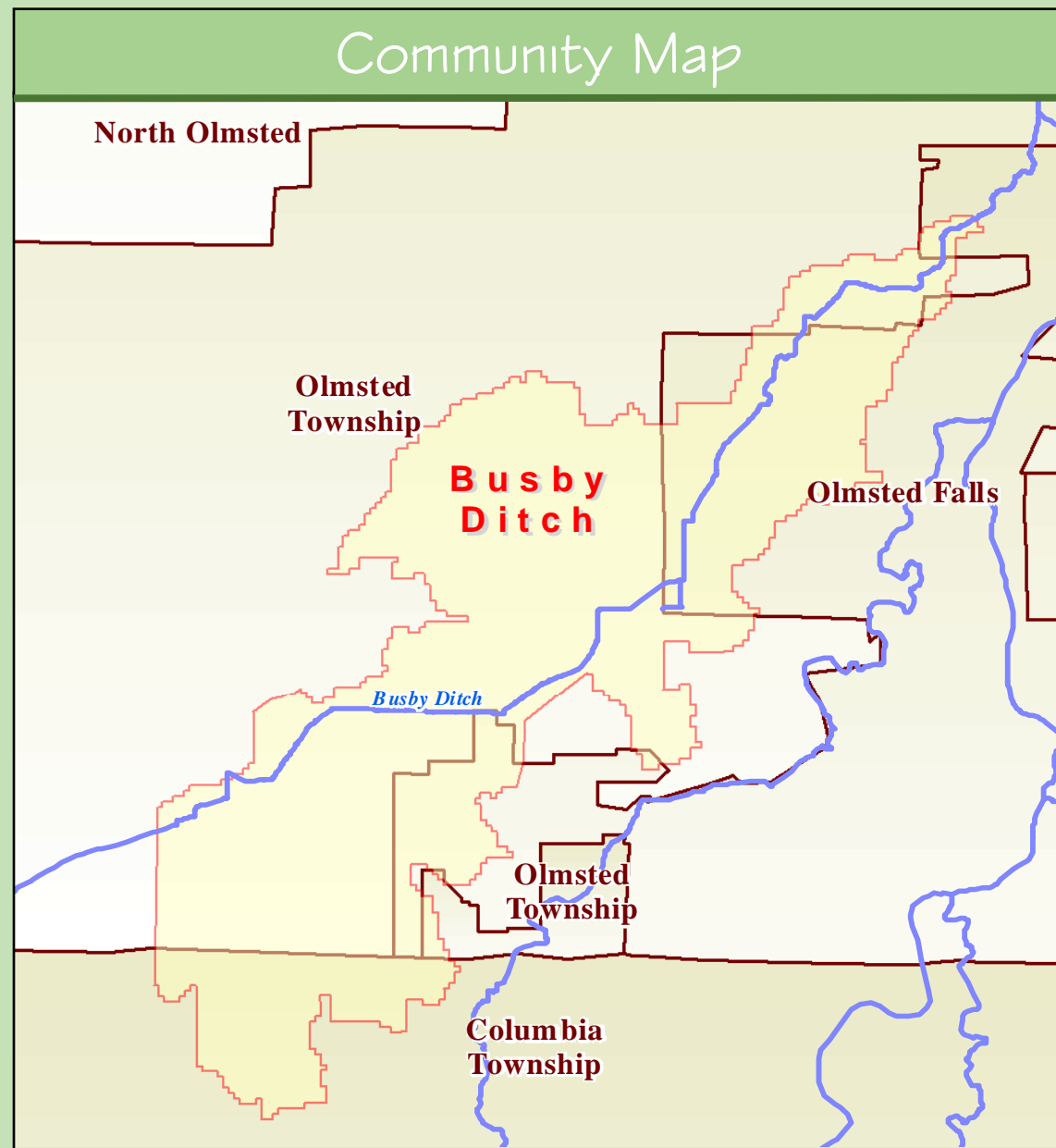
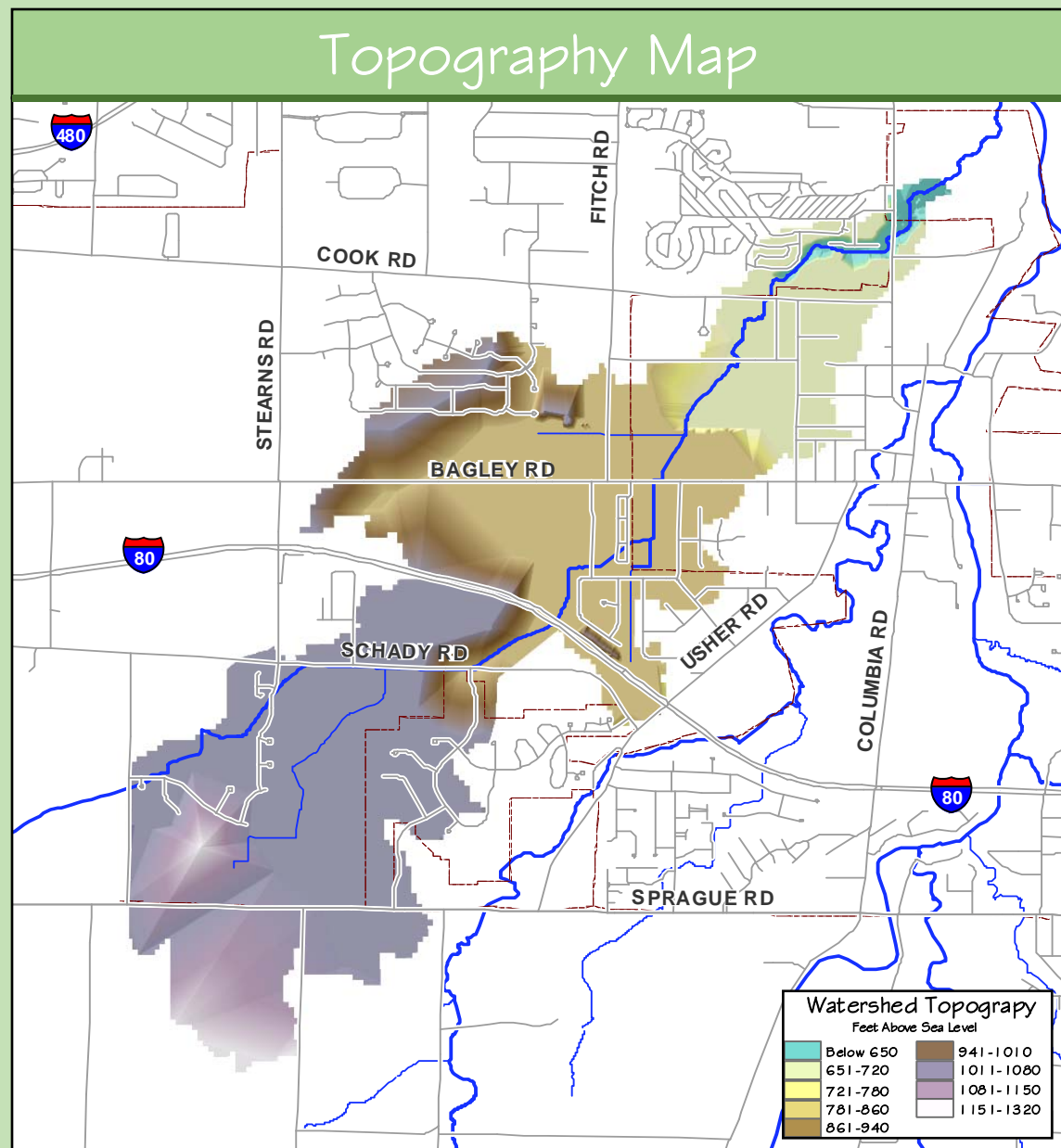


Busby Ditch

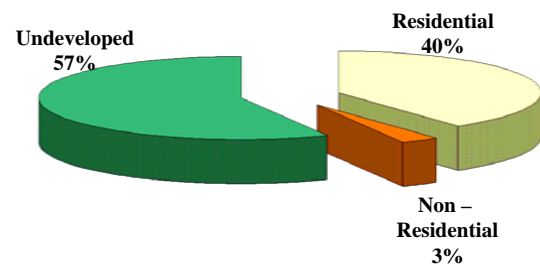
Getting to Know the Busby Ditch Watershed



These photographs show the confluence of the Busby Ditch and the Rocky River. This portion of the Busby Ditch is located in North Olmsted, just east of Columbia Rd.



Land Cover / Land Use Statistics



At this time, approximately 43 % of the Busby Ditch watershed is developed. Medium-density residential housing occupies 40 % of the land area, while another 3 % is used for commercial, industrial, or institutional purposes, such as Olmsted Falls Middle School and High School.

The remainder of the Busby Ditch watershed, 57 %, is undeveloped. Undeveloped lands may include forested areas, open grass areas, ponds, or wetlands. Their uses may include agriculture or recreation.

For More Information...



Print Date: Dec., 2005.

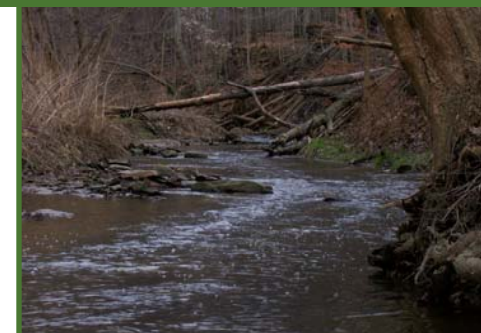
The Northeast Ohio Regional Sewer District has produced this watershed fact sheet using information gathered during the Regional Intercommunity Drainage Evaluation Study (RIDE Study). The purpose of this watershed fact sheet is to display planning-level data collected during the RIDE Study. The Northeast Ohio Regional Sewer District expressly disclaims any liability that may result from the use of the watershed fact sheets for any other purpose. For more information, please send all correspondence to the Northeast Ohio Regional Sewer District, 3900 Euclid Ave. Cleveland, OH 44115, Attn: Constance Haqq, Director of Communications & Community Relations, or contact our offices directly at (216) 881-6600.

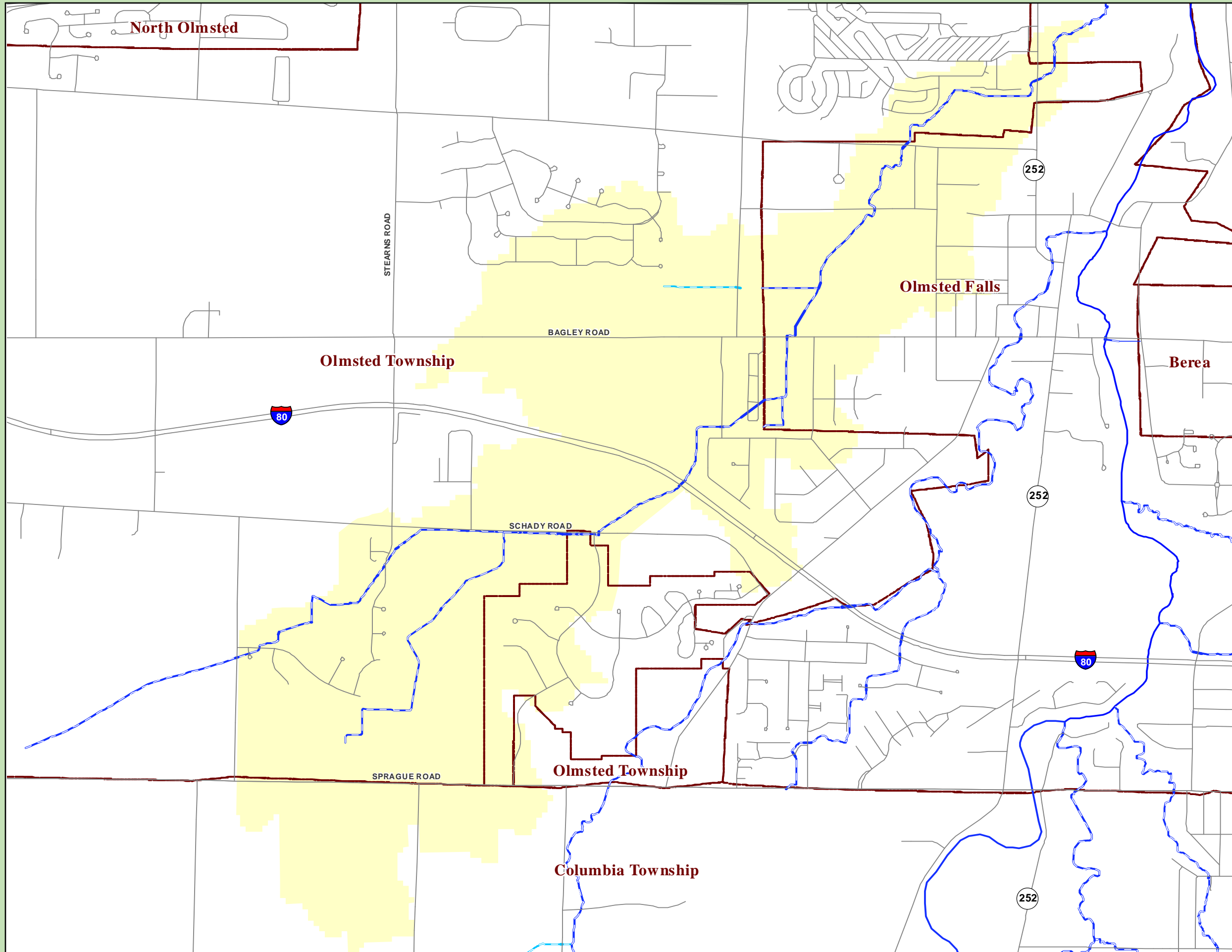
Community Statistics

Busby Ditch collects drainage from a 2.9 square-mile area, which includes portions of three communities before joining the Rocky River...

Percentage of the Busby Ditch watershed located within each community

Columbia Township	11.1%
Olmsted Falls	24.3%
Olmsted Township	64.5%





The Busby Ditch Drainage Network

The RIDE Study identified six miles of total drainage serving the Busby Ditch watershed, shown on the adjacent map as either intercommunity drainage (dark blue), or intracommunity drainage (light blue).

The intercommunity drainage system represents the network of sewers, culverts, and streams receiving flow from more than one community, whereas the intracommunity drainage system represents the local portions of the drainage network receiving storm water from a single community.

Legend

Intercommunity Drainage

- Sewers
- Culverts
- Streams

Intracommunity Drainage

- Pipes
- Culverts
- Streams

Landbase Features

- RIDE Watershed
- Community Boundaries
- Federal Highway
- Federal Route
- State Route
- Secondary Road

