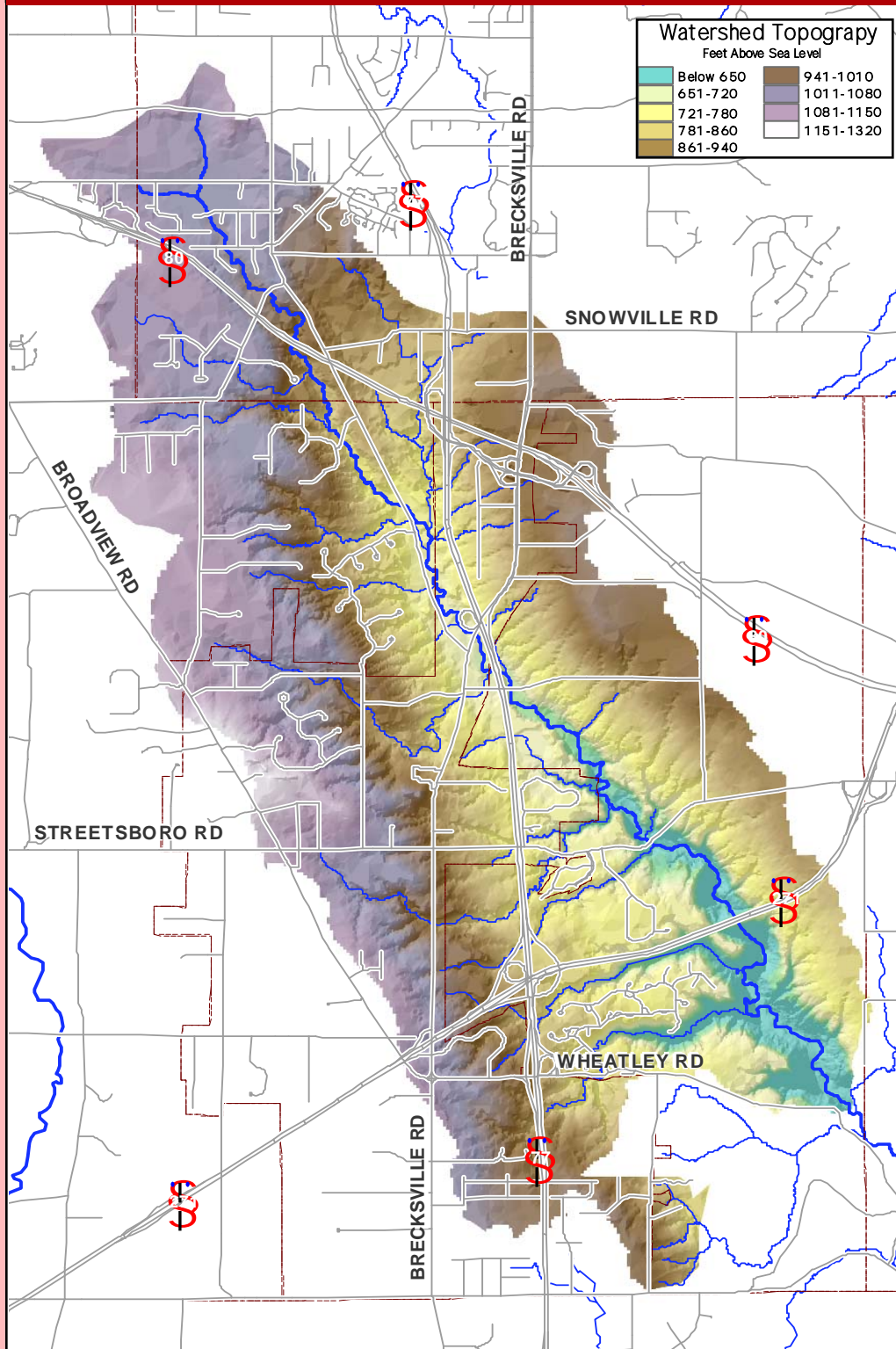
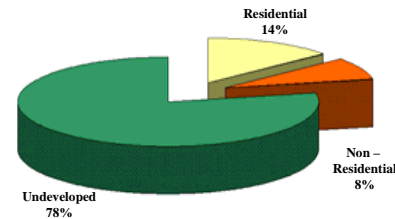


## Topography Map



## Land Cover / Land Use Statistics



At this time, approximately 22 % of the land area within the Furnace Run watershed has been developed. Medium-density residential housing occupies 14 % of the land area, while another 8 % is used for commercial, industrial, or institutional purposes.

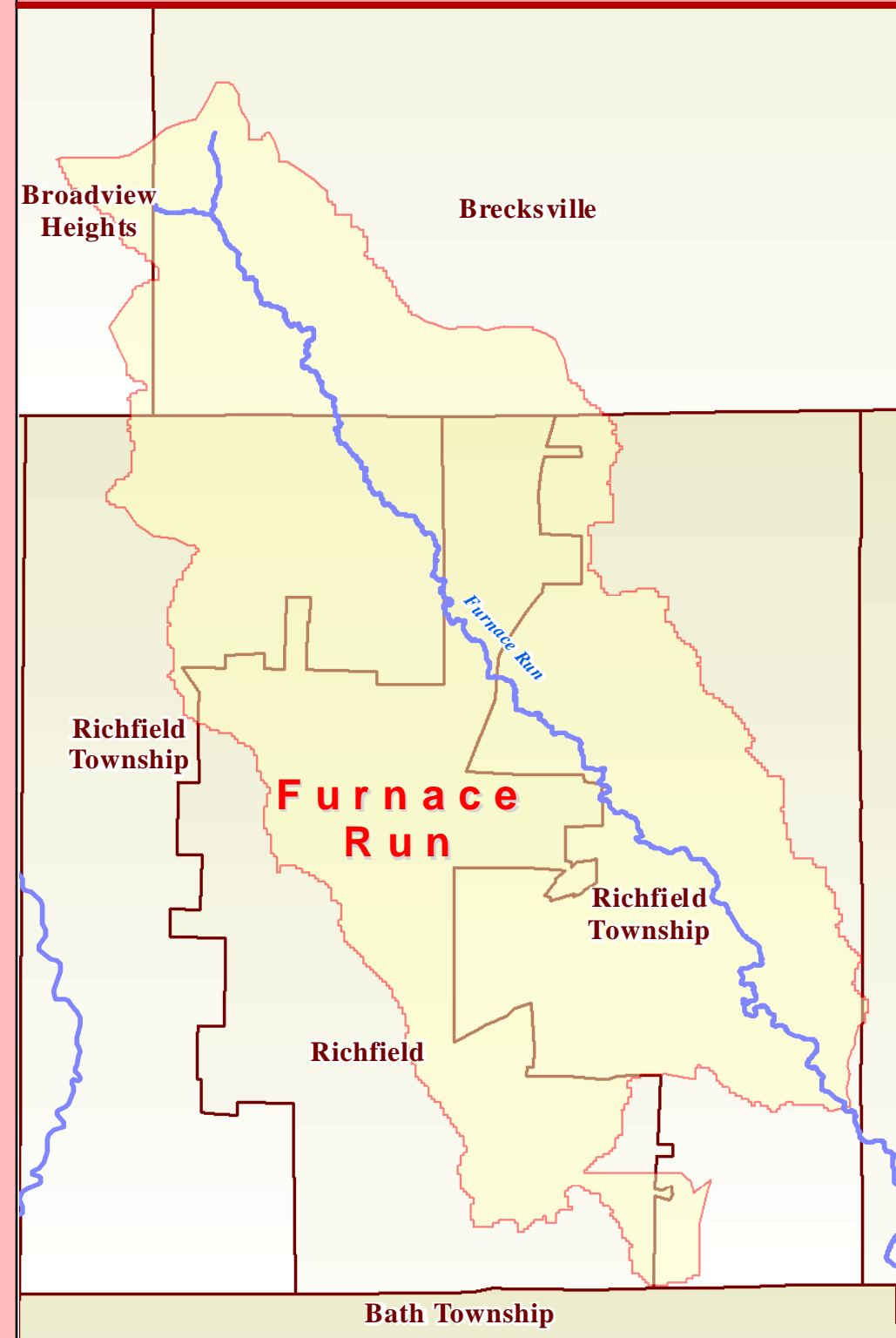
The remaining 78 % of the watershed is undeveloped. Undeveloped lands may include forested areas, open grass areas, ponds, or wetlands, and their uses may include agriculture or recreation.



# Furnace Run

## Getting to Know the Furnace Run Watershed

## Community Map



Furnace Run collects drainage from a 15.5 square-mile area, which includes portions of four communities, before joining the Cuyahoga River...

### Percentage of the Furnace Run watershed located within each community

Brecksville	17.3%
Broadview Heights	2.1%
Richfield	29.9%
Richfield Township	50.6%

These photographs of Furnace Run were taken from within Summit County's Furnace Run Metro Park. They show a portion of the channel just downstream from the Brushwood Lake and Pavilion area.

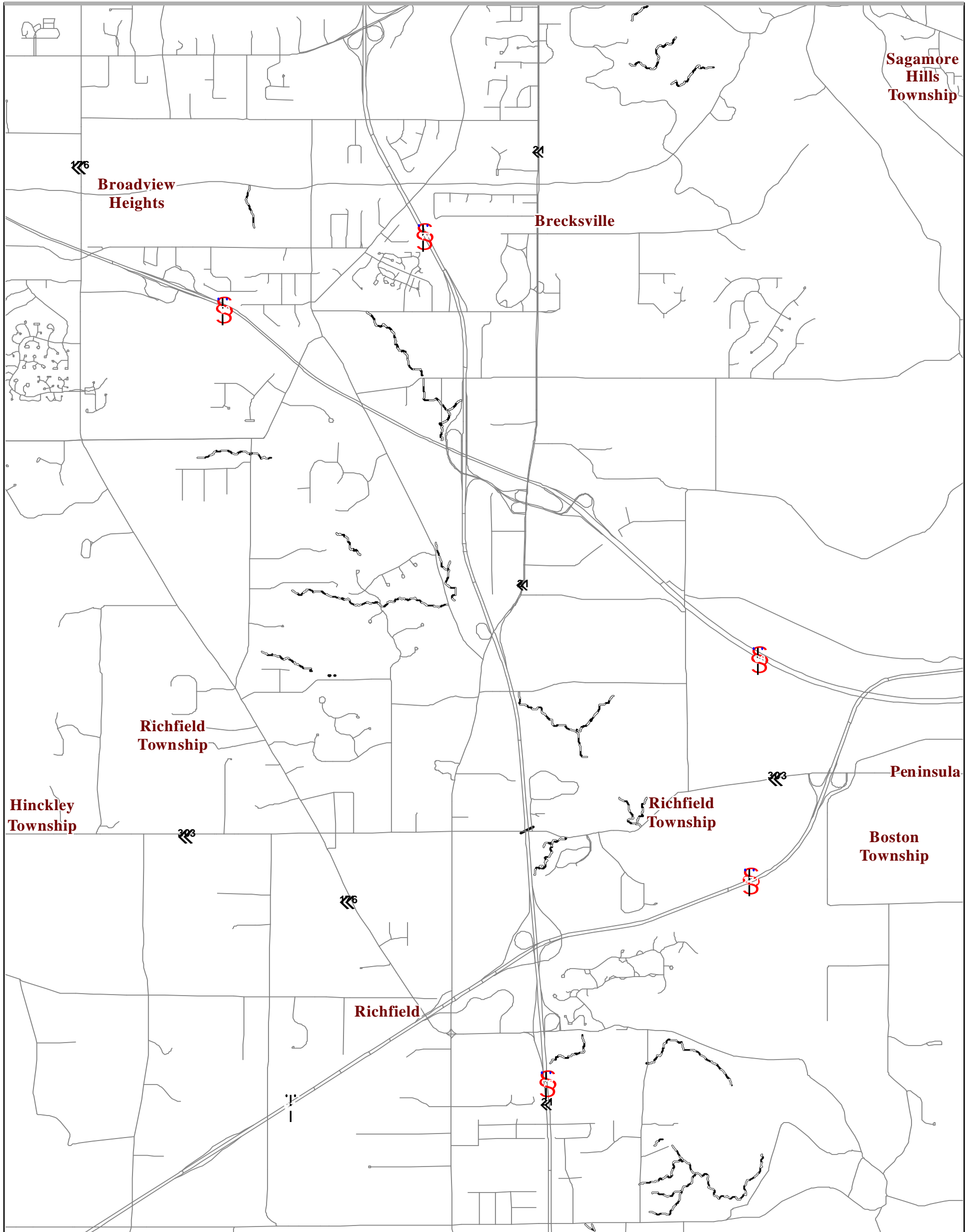


## For More Information...



Print Date: Dec., 2005.

The Northeast Ohio Regional Sewer District has produced this watershed fact sheet using information gathered during the Regional Intercommunity Drainage Evaluation Study (RIDE Study). The purpose of this watershed fact sheet is to display planning-level data collected during the RIDE Study. The Northeast Ohio Regional Sewer District expressly disclaims any liability that may result from the use of the watershed fact sheets for any other purpose. For more information, please send all correspondence to the Northeast Ohio Regional Sewer District, 3900 Euclid Ave. Cleveland, OH 44115, Attn: Constance Haqq, Director of Communications & Community Relations, or contact our offices directly at (216) 881-6600.



The RIDE Study identified 38 miles of total drainage serving the Furnace Run watershed, shown on the adjacent map as either intercommunity drainage (dark blue), or intracommunity drainage (light blue).

The intercommunity drainage system represents the network of sewers, culverts, and streams receiving flow from more than one community, whereas the intracommunity drainage system represents the local portions of the drainage network receiving storm water from a single community.

**Legend**

**Intercommunity Drainage**  
 — Sewers  
 — Culverts  
 — Streams

**Intracommunity Drainage**  
 — Sewers  
 — Culverts  
 — Streams

**Landbase Features**  
 RIDE Watershed  
 Community Boundaries  
 Secondary Road

Federal Highway  
 Federal Route  
 State Route