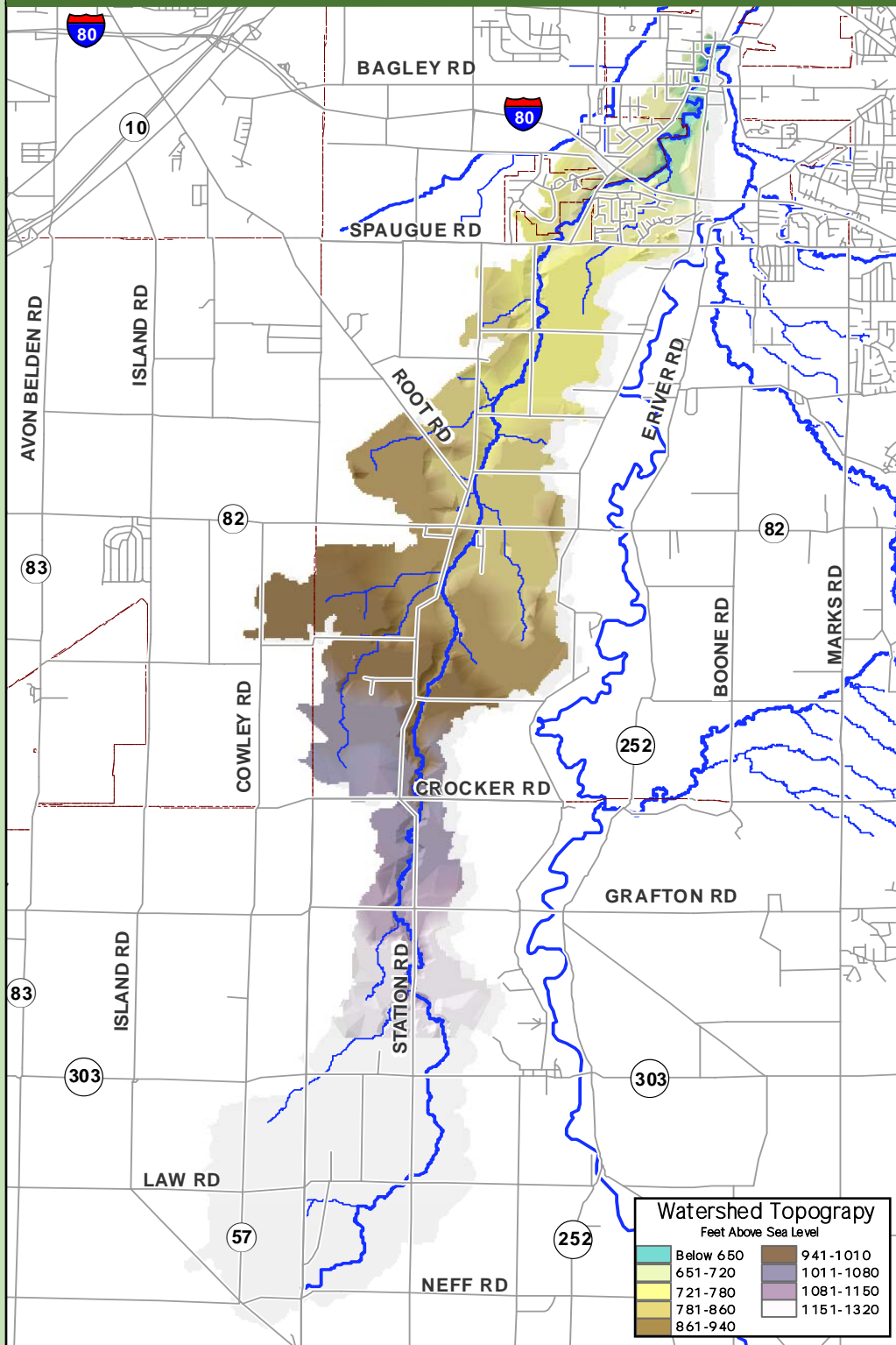
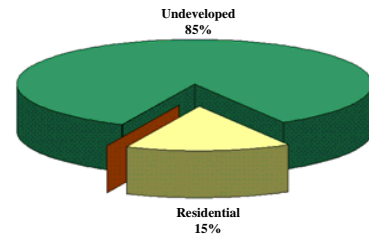


Topography Map



Land Cover / Land Use Statistics



At this time, approximately 15 % of the land area within the Plum Creek watershed is comprised of medium-density residential housing. There are no areas used for commercial, industrial or institutional land purposes.

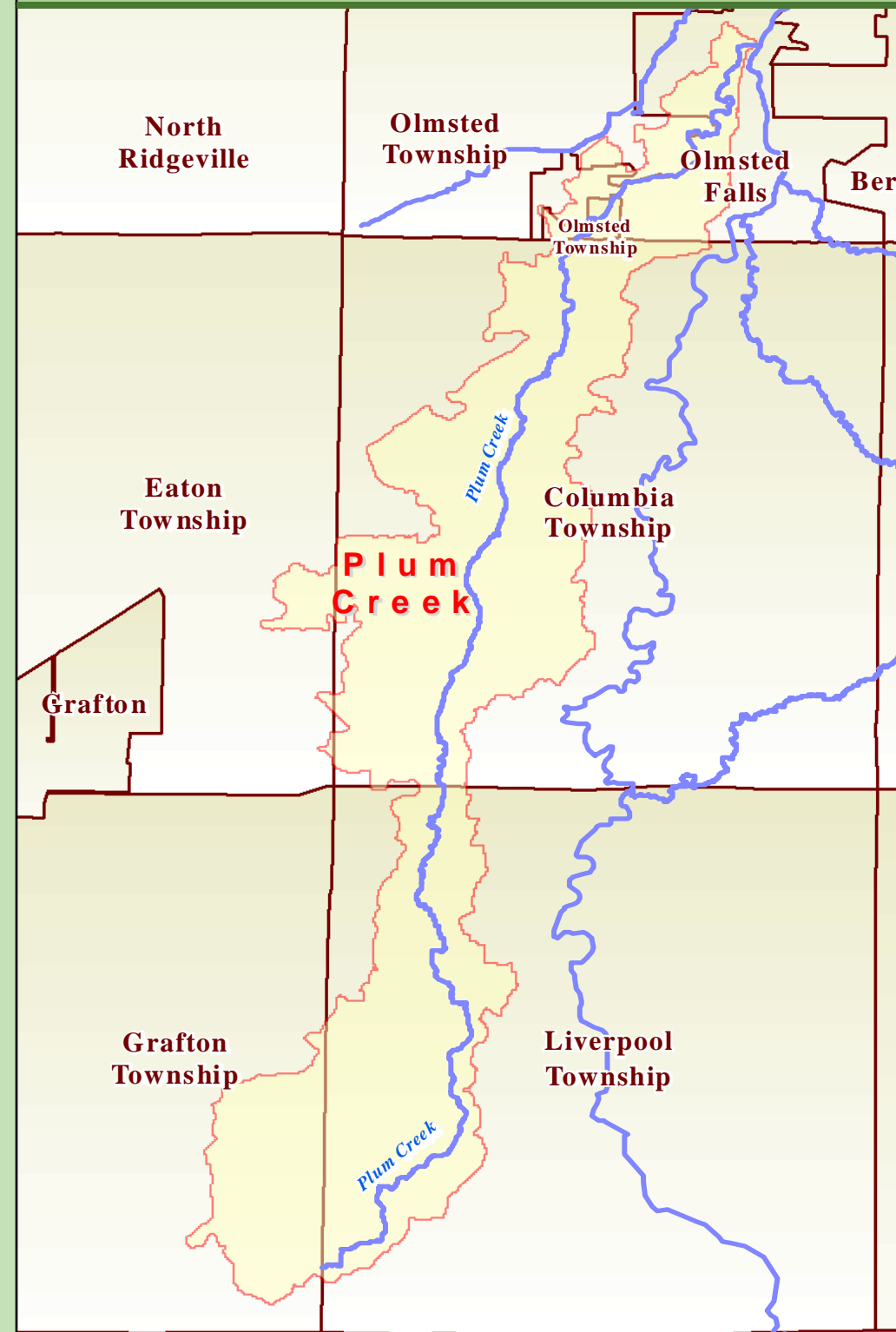
The remaining 85 % of the watershed is undeveloped. Undeveloped lands may include forested areas, open grass areas, ponds, or wetlands. Their uses may include agriculture or recreation.



Plum Creek

Getting to Know the Plum Creek Watershed

Community Map



Plum Creek collects drainage from a 17.4 square mile area, which includes portions of six communities, before joining the west branch of the Rocky River...

Percentage of the Plum Creek watershed located within each community

Columbia Township	47.0%
Eaton Township	1.9%
Grafton Township	11.9%
Liverpool Township	28.6%
Olmsted Falls	7.5%
Olmsted Township	3.1%

The photographs of Plum Creek show the falls upstream of and at its confluence with the Rocky River in Olmsted Falls...



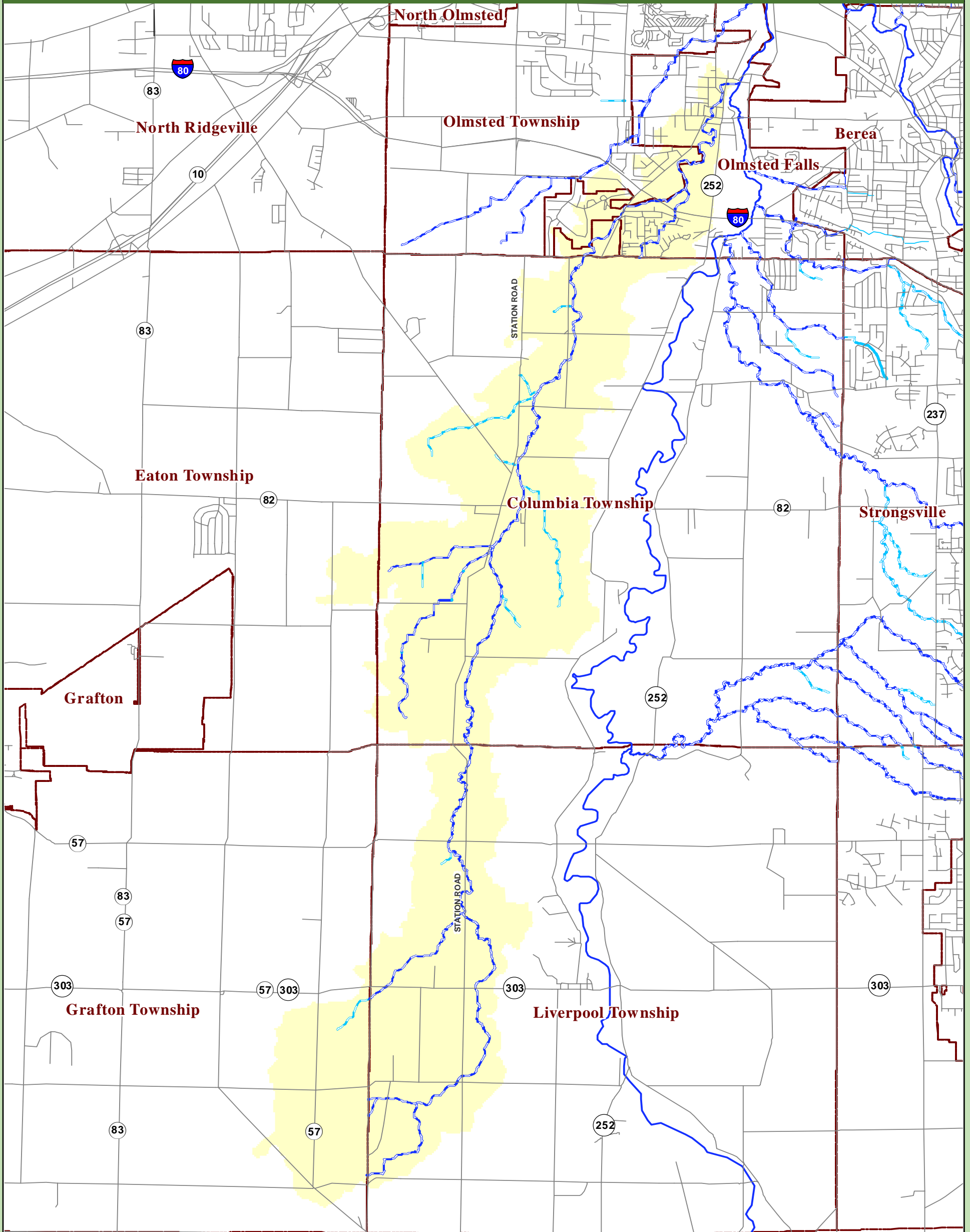
For More Information...



Print Date: Dec., 2005.

The Northeast Ohio Regional Sewer District has produced this watershed fact sheet using information gathered during the Regional Intercommunity Drainage Evaluation Study (RIDE Study). The purpose of this watershed fact sheet is to display planning-level data collected during the RIDE Study. The Northeast Ohio Regional Sewer District expressly disclaims any liability that may result from the use of the watershed fact sheets for any other purpose. For more information, please send all correspondence to the Northeast Ohio Regional Sewer District, 3900 Euclid Ave. Cleveland, OH 44115, Attn: Constance Haqq, Director of Communications & Community Relations, or contact our offices directly at (216) 881-6600.

The Plum Creek Drainage Network



The RIDE Study identified 33 miles of total drainage serving the Plum Creek watershed, shown on the adjacent map as either intercommunity drainage (dark blue), or intracomunity drainage (light blue).

The intercommunity drainage system represents the network of sewers, culverts, and streams receiving flow from more than one community, whereas the intracomunity drainage system represents the local portions of the drainage network receiving storm water from a single community.

Legend

Intercommunity Drainage

- Sewers
- Culverts
- Streams

Intracomunity Drainage

- Sewers
- Culverts
- Streams

Landbase Features

- RIDE Watershed
- Community Boundaries
- Secondary Road



Federal Highway



Federal Route



State Route