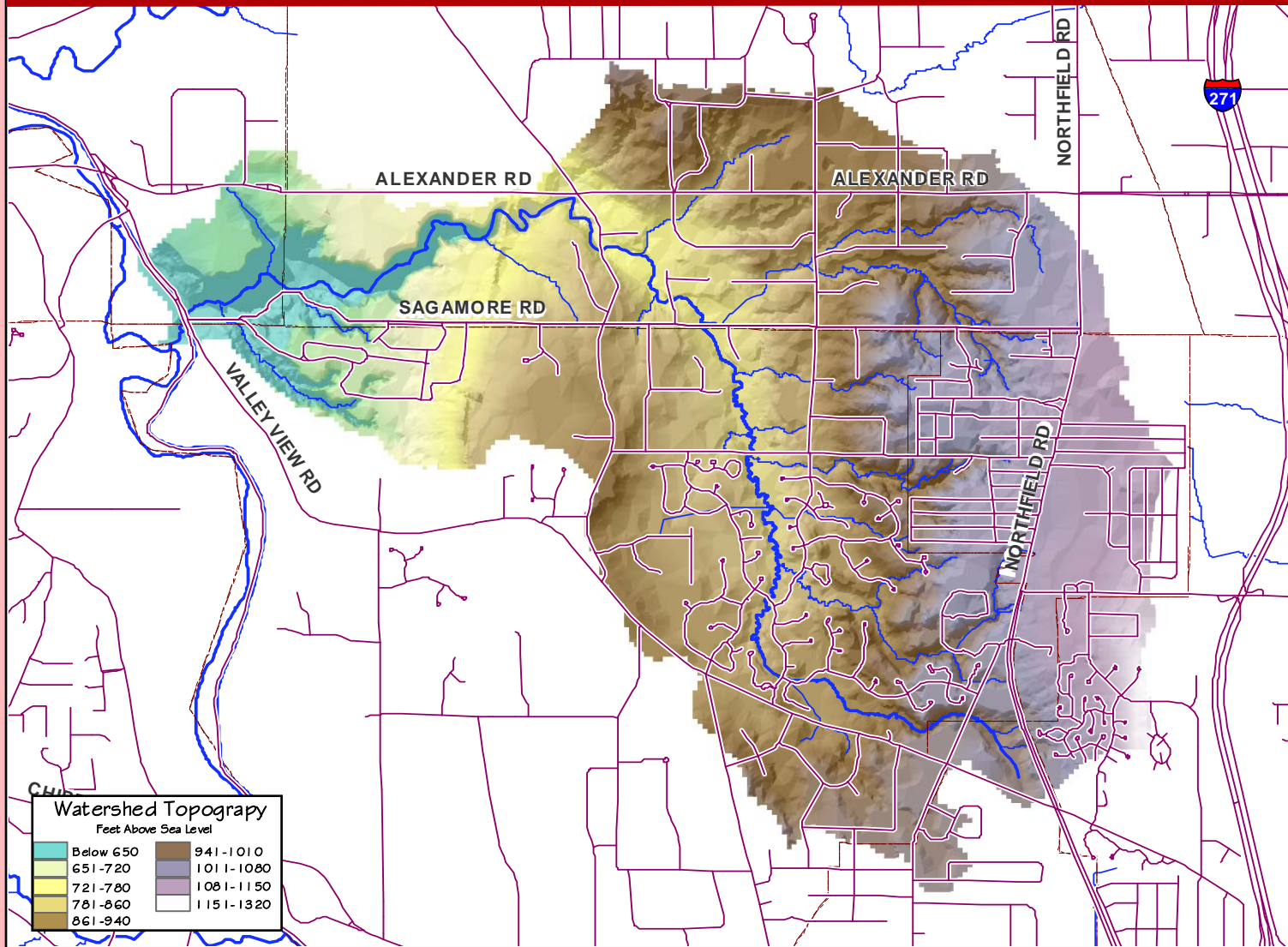
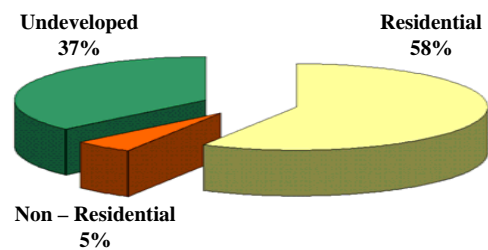


Topography Map



Land Cover / Land Use Statistics



At this time, approximately 63 % of the land area within the Sagamore Creek watershed has been developed. Medium-density residential housing occupies 58 % of the land area, while another 5 % is used for commercial, industrial, or institutional purposes.

The remainder of the Sagamore Creek watershed, 37 %, is undeveloped. Undeveloped lands may include forested areas, open grass areas, ponds, or wetlands, and their uses may include agriculture or recreation.

For More Information...



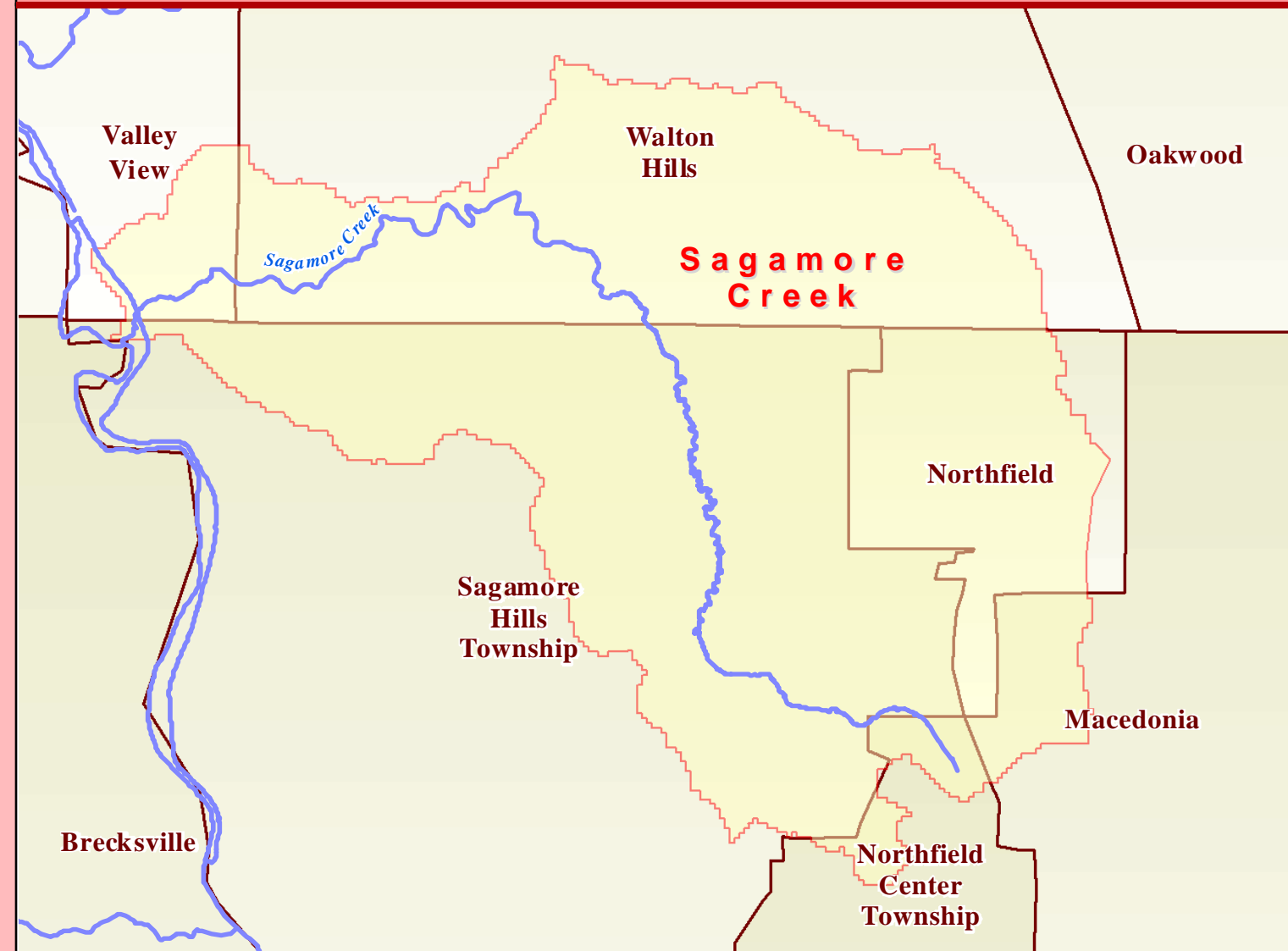
Print Date: Dec., 2005

The Northeast Ohio Regional Sewer District has produced this watershed fact sheet using information gathered during the Regional Intercommunity Drainage Evaluation Study (RIDE Study). The purpose of this watershed fact sheet is to display planning-level data collected during the RIDE Study. The Northeast Ohio Regional Sewer District expressly disclaims any liability that may result from the use of the watershed fact sheets for any other purpose. For more information, please send all correspondence to the Northeast Ohio Regional Sewer District, 3900 Euclid Ave. Cleveland, OH 44115, Attn: Constance Haqq, Director of Communications & Community Relations, or contact our offices directly at (216) 881-6600.

Sagamore Creek

Getting to Know the Sagamore Creek Watershed

Community Map

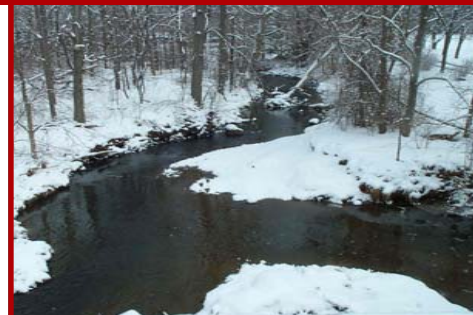


Community Statistics

Sagamore Creek collects drainage from a 6.6 square-mile area, which includes portions of the following six communities before joining the Cuyahoga River...

Percentage of the Sagamore Creek Watershed Located within each Community

Macedonia	3.5%	Sagamore Hills Township	43.7%
Northfield	13.8%	Valley View	3.9%
Northfield Center Township	2.4%	Walton Hills	32.7%



The Sagamore Creek Drainage Network

The RIDE Study identified 32 miles of total drainage serving the Sagamore Creek watershed, shown on the adjacent map as either intercommunity drainage (dark blue), or intracommunity drainage (light blue).

The intercommunity drainage system represents the network of sewers, culverts, and streams receiving flow from more than one community, whereas the intracommunity drainage system represents the local portions of the drainage network receiving storm water from a single community.

- Legend**
- Intercommunity Drainage**
- Sewers
 - Culverts
 - Streams
- Intracommunity Drainage**
- Pipes
 - Culverts
 - Streams

- Landbase Features**
- RIDE Watershed
 - Community Boundaries
 - Federal Highway
 - Federal Route
 - State Route
 - Secondary Road

