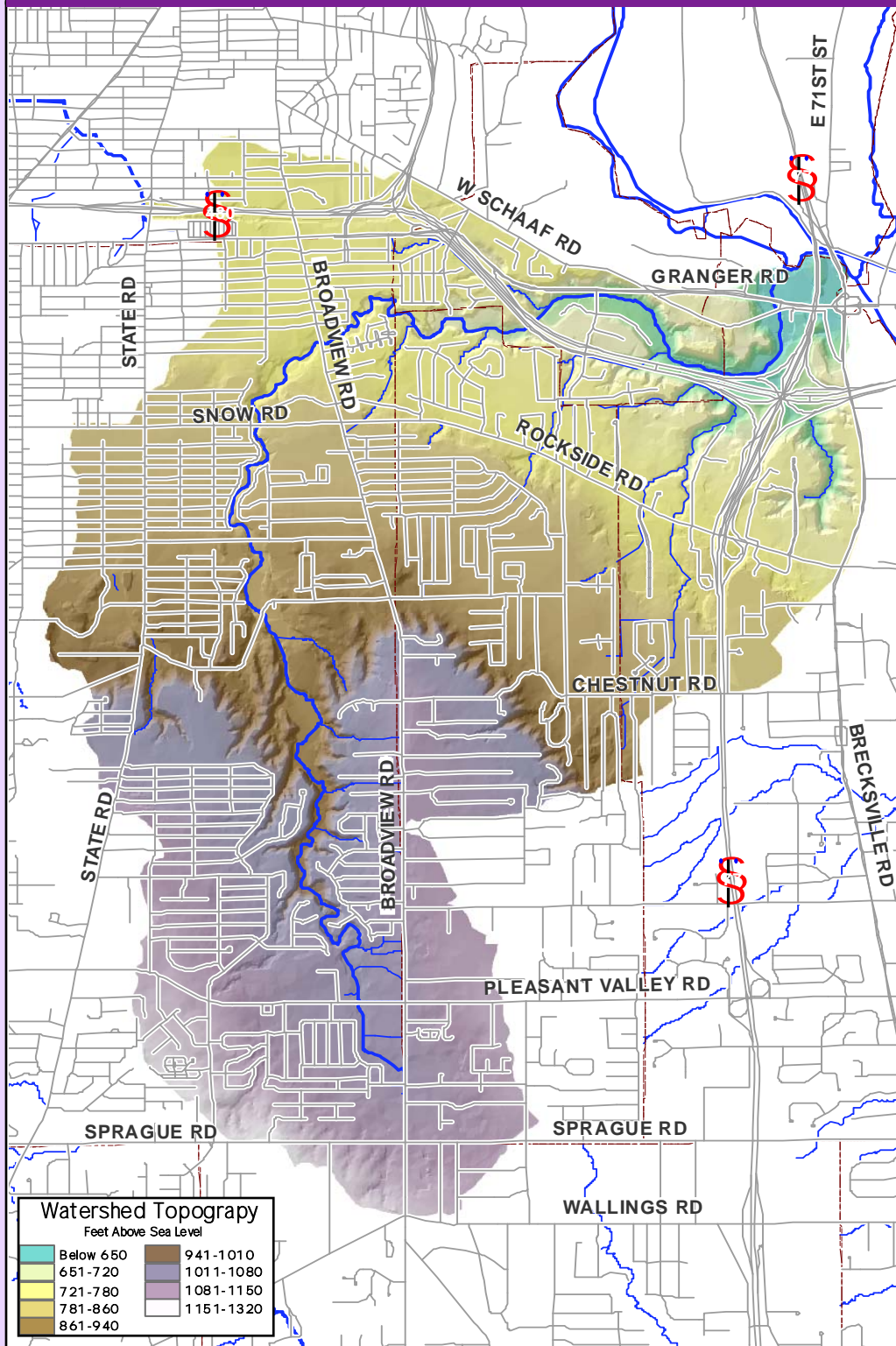
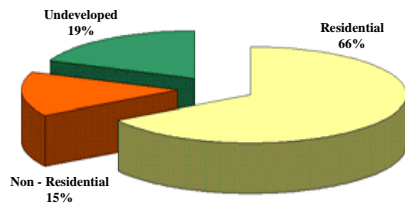


## Topography Map



## Land Cover / Land Use Statistics



At this time, approximately 81 % of the land area within the West Creek watershed has been developed. Medium-density residential housing occupies 66 % of the land area, while another 15 % is used for commercial, industrial, or institutional purposes.

The remaining 19 % of the watershed is undeveloped. Undeveloped lands may include forested areas, open grass areas, ponds, or wetlands, and their uses may include agriculture or recreation.



# West Creek

## Getting to Know the West Creek Watershed

## Community Map



West Creek collects drainage from a 14.1 square-mile area, which includes portions of six communities, before joining the Cuyahoga River...

### Percentage of the West Creek watershed located within each community

Broadview Heights	2.1%
Brooklyn Heights	6.7%
Cleveland	3.7%
Independence	15.5%
Parma	47.0%
Seven Hills	25.1%

The West Creek area has experienced significant changes as a result of development yet the West Creek Valley remains as one of the largest open spaces in south central Cuyahoga County.

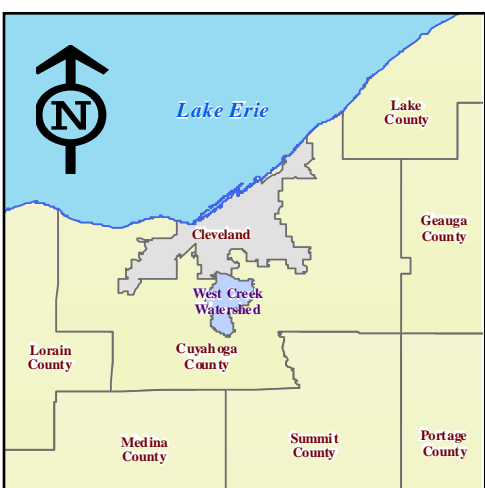
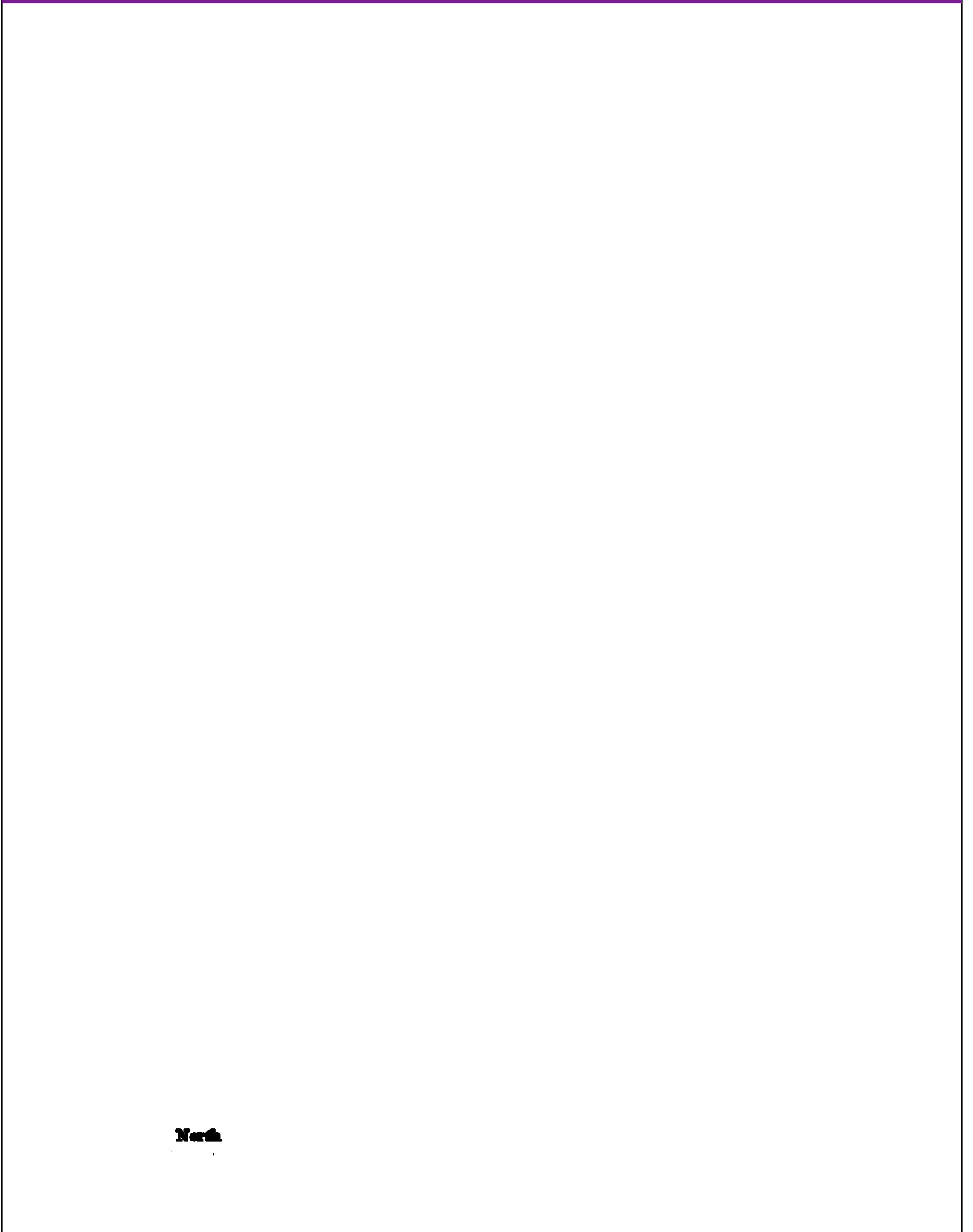


## For More Information...



Print Date: Dec., 2005.

The Northeast Ohio Regional Sewer District has produced this watershed fact sheet using information gathered during the Regional Intercommunity Drainage Evaluation Study (RIDE Study). The purpose of this watershed fact sheet is to display planning-level data collected during the RIDE Study. The Northeast Ohio Regional Sewer District expressly disclaims any liability that may result from the use of the watershed fact sheets for any other purpose. For more information, please send all correspondence to the Northeast Ohio Regional Sewer District, 3900 Euclid Ave. Cleveland, OH 44115, Attn: Constance Haqq, Director of Communications & Community Relations, or contact our offices directly at (216) 881-6600.



The RIDE Study identified 68 miles of total drainage serving the West Creek watershed, shown on the adjacent map as either intercommunity drainage (dark blue), or intracommunity drainage (light blue).

The intercommunity drainage system represents the network of sewers, culverts, and streams receiving flow from more than one community, whereas the intracommunity drainage system represents the local portions of the drainage network receiving storm water from a single community.

