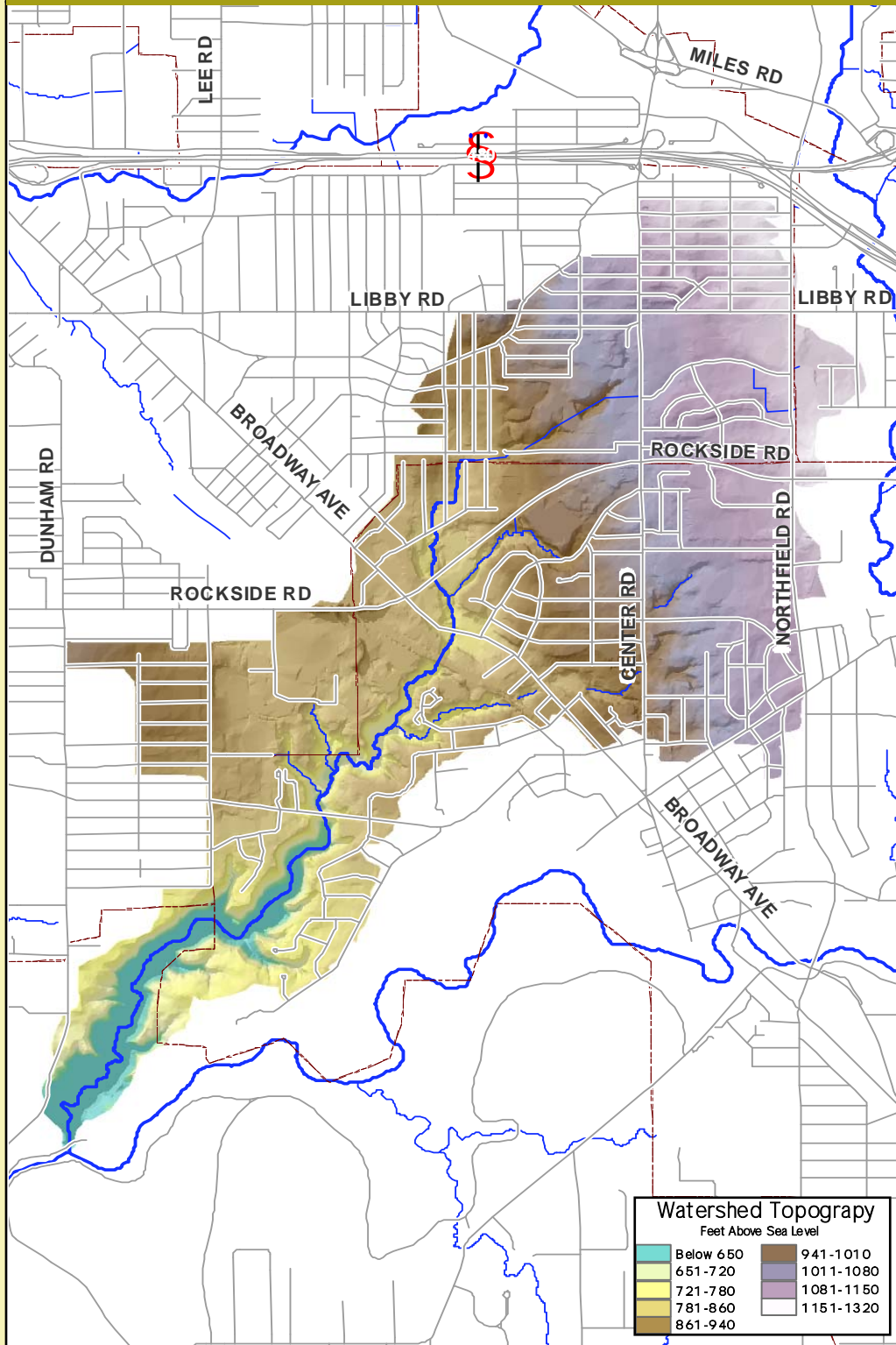
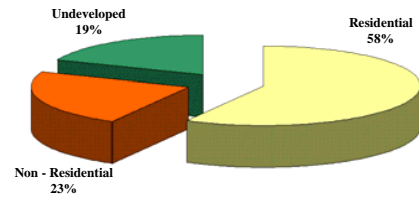


Topography Map



Land Cover / Land Use Statistics



At this time, approximately 81 % of the land area within the Wood Creek watershed has been developed. Medium-density residential housing occupies 58 % of the watershed, while another 23 % is used for commercial, industrial, or institutional purposes.

The remaining 19 % of the watershed is undeveloped. Undeveloped lands may include forested areas, open grass areas, ponds, or wetlands. Their uses may include agriculture or recreation.



Wood Creek

Getting to Know the Wood Creek Watershed

Community Map



Wood Creek collects drainage from a 3.5 square-mile area, which includes portions of four communities, before joining Tinkers Creek...

Percentage of the Wood Creek watershed located within each community

Bedford	55.3%
Bedford Heights	2.0%
Maple Heights	36.7%
Walton Hills	6.0%

The photographs of Wood Creek show its confluence with the Main Branch of Tinkers Creek. This portion of the stream is located in the Bedford Reservation of the Cuyahoga Valley National Park.



For More Information...



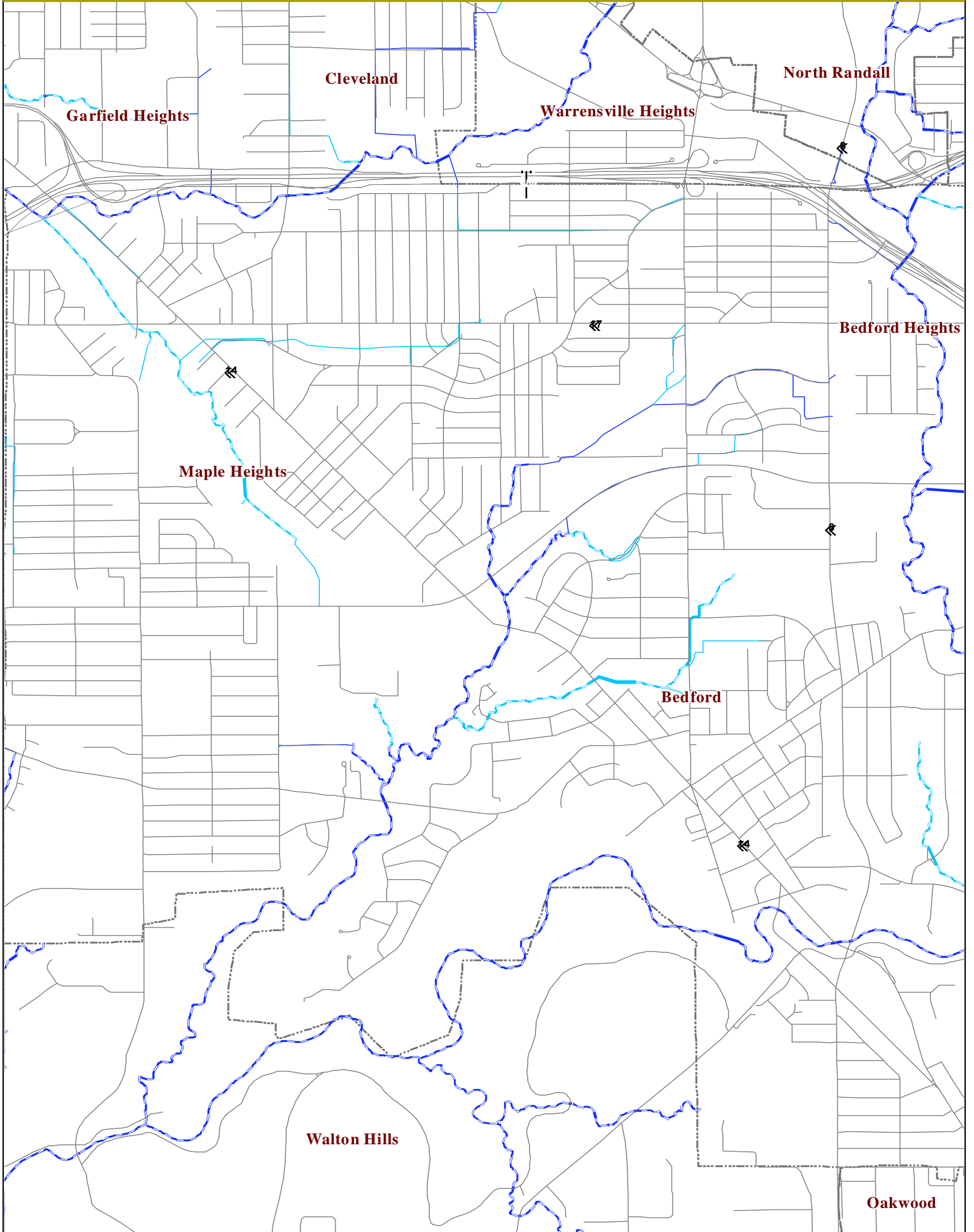
Northeast Ohio Regional Sewer District

Protecting Your Health and Environment

Print Date: Dec., 2005.

The Northeast Ohio Regional Sewer District has produced this watershed fact sheet using information gathered during the Regional Intercommunity Drainage Evaluation Study (RIDE Study). The purpose of this watershed fact sheet is to display planning-level data collected during the RIDE Study. The Northeast Ohio Regional Sewer District expressly disclaims any liability that may result from the use of the watershed fact sheets for any other purpose. For more information, please send all correspondence to the Northeast Ohio Regional Sewer District, 3900 Euclid Ave. Cleveland, OH 44115, Attn: Constance Haqq, Director of Communications & Community Relations, or contact our offices directly at (216) 881-6600.

The Wood Creek Drainage Network



The RIDE Study identified 15 miles of total drainage serving the Wood Creek watershed, shown on the adjacent map as either intercommunity drainage (dark blue), or intracommunity drainage (light blue).

The intercommunity drainage system represents the network of sewers, culverts, and streams receiving flow from more than one community, whereas the intracommunity drainage system represents the local portions of the drainage network receiving storm water from a single community.

