



**Northeast Ohio
Regional Sewer District**

REQUEST FOR PROPOSALS

2027

**Member Community
Infrastructure Program**

April 2, 2026

1.0 SUBMISSION OF APPLICATIONS

1.1 Proposals for Funding

Proposals for the 2027 Member Community Infrastructure Program (MCIP) must be submitted electronically through the Northeast Ohio Regional Sewer District (District) MCIP application. The Watershed Funding Programs Submission Access Request provides access to the 2027 MCIP application and requires registration through following link:

[Watershed Funding Programs Submission Access Request](#)

Applications will be accepted until the close of business (4:30 P.M.) on **Friday, May 15, 2026**.

When an application is successfully submitted, the applicant will receive a confirmation email. The District will only review complete applications. If an application is determined to be incomplete, the applicant will have three (3) business days, from the date of email receipt notification, to submit the necessary information to complete the application.

1.2 Pre-Proposal Meetings

District staff will provide opportunities to meet with applicants to discuss potential projects prior to the submission deadline. Applicants are strongly encouraged to take advantage of these meetings, which will be scheduled in April - May 2026. Please contact the District's Funding Programs Administrator II, Linda Mayer via email at mayerl@neorsd.org by close of business on **April 24, 2026**, to schedule a pre-proposal meeting.

1.3 MCIP Tutorial

The District has created an MCIP Tutorial that provides an overview of the program, what's new for the 2027 funding round, and detailed instructions about the web application and submittal of the Performance Verification Plan. The MCIP Tutorial can be accessed at the following link:

[MCIP Tutorial](#)

1.4 MCIP Contact

Pre-proposal meeting requests and all questions should be directed to the Funding Programs Administrator II, **Linda Mayer** via email at mayerl@neorsd.org.

2.0 INTRODUCTION

The MCIP is a funding program provided by the District to assist member communities and eligible political subdivisions of the State of Ohio within the District's territory that own, operate, and maintain eligible publicly owned sewerage system infrastructure tributary to a District wastewater treatment plant. MCIP funding is used for cost-effective sewer infrastructure projects to address water quality and quantity issues associated with sewer infrastructure that adversely impact human health and the environment. The District provides annual MCIP funding opportunities for sewer infrastructure repair and rehabilitation that will:

- Continue progress towards environmentally sustainable and healthy communities through protection and improvement of the region's water resources consistent with the vision of the District;
- Assist member communities' compliance with the District's Community Discharge Permit Program;
- Improve the function and condition of local sewer systems; and
- Identify and remove sources of inflow and infiltration (I/I) from the sewer system which preserves the hydraulic capacity of the local and District's sewer system and alleviates problems such as basement flooding.

3.0 DESCRIPTION OF THE MCIP PROGRAM

3.1 Eligible Entities

The MCIP is open to District member communities and eligible political subdivisions within the District's territory that own, operate, and maintain eligible public sewerage system infrastructure. Member communities must be in compliance with the Water Quality Technical Support Program under the District's Title III Separate Sanitary Sewer Code to be eligible for MCIP funding. For additional information on Title III requirements contact Jeff Jowett, Community Discharge Permit Program Manager at Jowettj@neorsd.org.

3.2 Eligible Public Sewerage System Infrastructure

Public Sewerage System Infrastructure as used herein means local infrastructure that provides public sanitary sewage collection and conveyance service tributary to a District wastewater treatment plant, but does not include individual property or building service

laterals and pumps, plumbing fixtures, building drains and subdrains, building sewers, and building storm sewers that only service the property of the member community or eligible political subdivision.

3.3 Eligible Projects

Eligible Projects include but are not limited to:

- **Projects that Mitigate Sanitary Sewer Overflows (SSO) and Illicit Discharges:** Projects necessary to mitigate separate sanitary sewer overflows and illicit discharges.
- **Projects that Mitigate Public Infiltration & Inflow (I/I):** Projects within the public right-of-way or public sewer easement necessary to address I/I problems, including but not limited to, rehabilitation or separation of common trench pipes and manholes, removal of direct inflow connections, repair, or replacement of sanitary or storm sewers, and reduction of public sources of I/I.
- **Projects that Mitigate Private Infiltration & Inflow (I/I):** Projects necessary to address private sources of I/I. This includes any work outside the public right-of-way and public sewer easements that reduce groundwater/stormwater entering the sanitary sewer collection system.
- **Projects that Remove/Eliminate Failing Home Sewage Treatment Systems (HSTS):** Projects to construct new separate sanitary sewers to eliminate failing HSTSs.
- **Projects that Remove/Eliminate Failing Wastewater Treatment Plants (WWTPs):** Projects that remove failing and outdated (publicly or privately owned) WWTPs and connect to an existing sanitary sewer system that is tributary to a District WWTP.
- **Projects that Improve Existing Pump Stations:** Projects that improve existing pump station infrastructure and eliminate the risk of sewer system overflows to the environment.
- **Projects that Improve Local Sewer System Level of Service:** Projects that reduce local sewer flooding and backups in the local system that can be attributed to undersized or structurally deficient local sewers. Such projects include efforts to address basement flooding in separate and combined sewer systems, and to the extent practical, on-site stormwater management practices to mitigate the increase in downstream flows.

- **Projects that Manage Stormwater Flow to Improve Combined/Separate Sanitary Sewer Level of Service:** Projects that reduce volume or flow rate of stormwater to a combined sewer, separate storm sewer, and/or directly to a receiving water body that improves the level of service of a combined or sanitary sewer.
- **Projects that Separate Over/Under Common Trench Sewers:** Complete separation of common trench over/under sewers, with new or rehabilitated infrastructure to separately transport storm and sanitary flows.

NOTE: MCIP funds cannot be used for any project that causes, accelerates, or contributes to water quality degradation or water quantity issues that increase flooding, streambank erosion, or is otherwise detrimental to human health within the District's service area.

3.4 Project Requirements

To be eligible for MCIP funding, projects must meet the following minimum requirements:

- Reduce water quantity issues and/or address water quality issues that impact human health and the environment, associated with combined or separate sanitary sewer infrastructure problems, as determined by the applicant or the District.
- Located in the District's Wastewater Service Area (<http://arcg.is/2bPxzEt>).
- Include a Project Match as described in Section 3.5.
- Meet all applicable District, federal, state, and local regulations.
- It cannot be the subject of a contract which transfers ownership of the project to a private entity.
- Design-only projects must be completed within 12 months of the MCIP Project Agreement start date with Design submitted no later than 12/31/2027.
- Construction-only projects must include professional engineer stamped design drawings at the time of application, and construction activity must be completed within 18 months of the MCIP Agreement estimated start date of January 1, 2027. District may accept applications for Construction Only projects that do not include complete engineering plans at the time of submission of the application, however stamped engineering plans must be submitted no later than 12/31/2026.

3.5 Infrastructure Investment Focus Areas

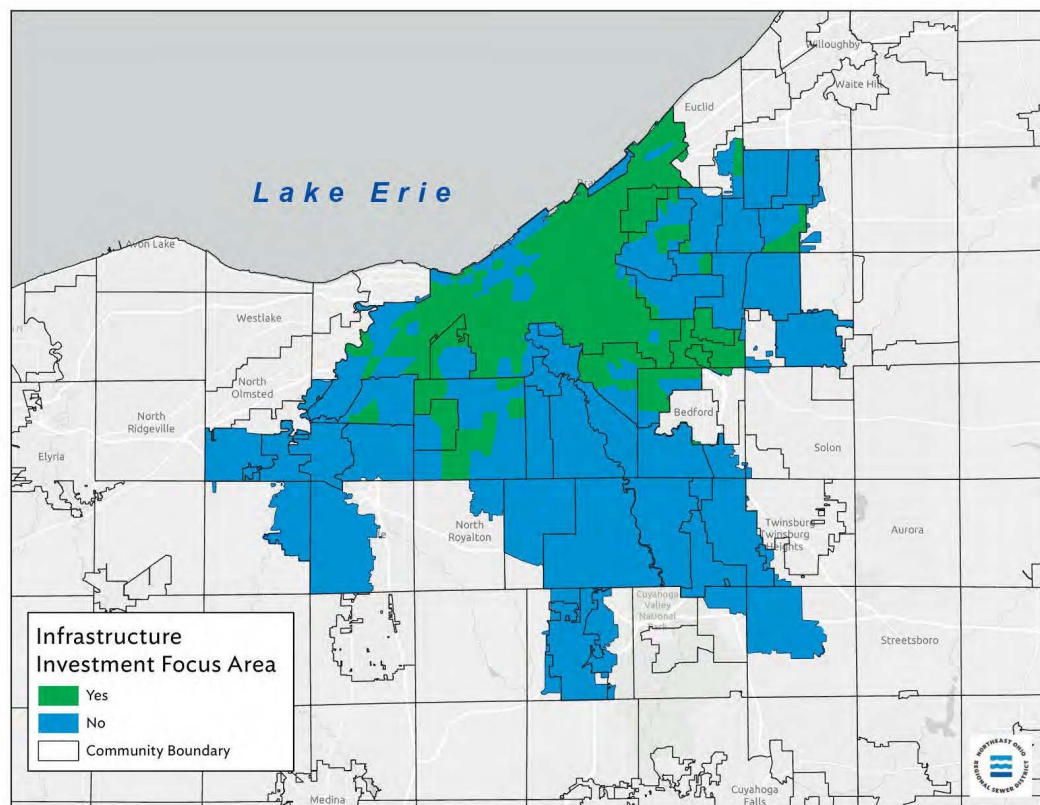
To increase investment in addressing local infrastructure needs in economically under-resourced communities, the District has established dedicated funds to support projects within the Infrastructure Investment Focus Areas (IIFA). For the purposes of this RFA,

IIFA is defined as those areas within the District’s sanitary sewer service area that are included in a census tract with high poverty levels (i.e., 250% of the Federal Poverty Level). Projects designated within IIFA will be evaluated separately and compete for funding solely among other projects within IIFA.

A 25% match is required for projects within IIFA. A map delineating the IIFA is shown in **Figure 1** and can be viewed at the following link:

[2027 MCIP Infrastructure Investment Focus Area](#)

Figure 1: Infrastructure Investment Focus Area (in green)



3.6 Project Match

Projects must include a minimum of 25% non-District matching funds dedicated to the project. All funds must be approved as eligible by the District for this requirement. Matching funds may include cash and/or in-kind sources. For example, costs associated with road rehabilitation in which MCIP funding is proposed for sanitary or combined sewer replacement or rehabilitation may be captured as non-District matching funds. Community Cost Share (CCS) may be used in accordance with CCS policy as community match. The following project costs may be captured to meet this requirement:

- Personnel: Fully loaded labor costs for employees of the community related to the direct performance of engineering and design, construction services, project management, and performance verification on the project.
- Planning and design costs directly related to the project that were incurred prior to the submittal of a project application that had a material benefit to the application. These costs include, but are not limited to CCTV costs, manhole inspection costs, pre- construction performance verification activities (i.e. flow monitoring, water quality sampling), and engineering services such as surveying, design engineering, and cost estimating. Itemization and documented proof of these costs is required to be submitted with the application for consideration.

NOTE: Funds acquired from previous District awards cannot be used as match. Communities should contact the District's Funding Programs Administrator II to assess if the funding source is eligible.

3.6.1 Project Match Waiver – Fiscal Status

The District waives the 25% match requirement for communities identified by the Office of the Auditor of the State of Ohio as being a local government in fiscal caution, fiscal watch, or fiscal emergency status (see <https://ohioauditor.gov/fiscal/local.html>).

4.0 TERMS OF GRANT FUNDING

There are two (2) mechanisms for funding under the MCIP: (a) MCIP Grant or (b) a Community Operating Lease. The District will determine the appropriate funding mechanism during the application review process. Applicants do not need to specify a funding preference. Following award, the District and the Grantee will enter into a Project Agreement.

All available MCIP funds will be provided by the District to Grantees for direct project costs, conditioned on the District's prior approval of the project and Grantee's compliance with this Policy and the executed Project Agreement. If the Grantee fails to maintain a project funded through the MCIP in accordance with the Project Agreement, it shall be liable for the full amount of MCIP funds paid for the project.

The MCIP is a direct disbursement grant, and payment will be made only on project-specific invoices as referenced in the approved project budget accrued on or after January 1, 2027. If the project for which you are applying is part of a larger construction project, the District will require individual, itemized, and verified invoices to support direct disbursement. Refer to the District's MCIP Process document for additional information on direct disbursement [MCIP Process](#).

Costs associated with services provided by third parties towards the project, including technical services such as engineering and design, construction services, project management, performance verification, testing, and inspection, and/or other direct costs as approved by the District, are eligible for grant funding. Indirect cost allocations are not eligible for grant funding.

5.0 PROJECT PERFORMANCE VERIFICATION

The District requires project performance verification to demonstrate how the project functions. Verification activities and data collection may include reporting, pre- construction rainfall and flow monitoring, water quality sampling, and modeling or other type of evaluation, such as Rainfall Derived Inflow and Infiltration (RDII) determination depending on the type of project.

For projects that address I/I reduction or elimination, communities will only be responsible for pre-construction flow monitoring (which can also be completed as part of design), as opposed to both pre- and post-construction. Performance Verification Guidelines on the type of pre and/or post construction monitoring, sampling and evaluation are provided at:

[Performance Verification Technical Guidance](#)

Applicants should review the guidelines and include in the application a narrative summary of their planned overall approach to performance verification. Identify what new flow monitoring or water quality data are required, if new data will be collected, and estimated associated costs. If previous data are being used, identify from what project and phase. It is the applicant's responsibility to ensure that no negative impacts will occur as a result of the proposed project through investigations, modeling, or other analysis.

6.0 APPLICATION EVALUATION

The District will review and score MCIP applications that meet eligibility requirements. Applications will be evaluated and ranked based on the following Application Scoring Criteria (**Table 1**).

Table 1. Application Scoring Criteria

Category	Maximum Points
Infrastructure Condition	25
Water Quality & Quantity Benefits	40
Private I/I Mitigation	10
Benefit to the District	15
Matching Funds	10
TOTAL	100

6.1 Infrastructure Condition (25%)

Infrastructure condition will be scored using the current and actual condition of existing structure(s) using the condition descriptions defined in **Table 2**. Information that expands on the description should be provided with the application to assist with the scoring of this category. This may include but is not limited to condition assessments, identification of broken pipes, televised underground system inspection reports, age inventory reports and maintenance records, and any additional information that may impact the evaluation of the infrastructure condition. If available, condition assessments should be provided in accordance with NASSCO's Pipeline and Manhole Assessment and Certification Program (PACP and MACP). NASSCO condition assessment is recommended. Only provide a high-level summary spreadsheet that details the sewer system's condition. If available, please provide photo or video proof of major defects with detailed documentation indicating defect(s).

Note: To validate condition rating, photo/video evidence or a structural PACP/MACP report must be submitted.

Due to deficiencies commonly experienced with Over/Under sewer configurations (deteriorating, leaky, contribute high I/I and are difficult to maintain), Over/Under systems will automatically be scored 25 points in the Infrastructure Condition category.

Table 2. Rating System for Structural Infrastructure Condition

Condition Rating	Description	Points
Failed	Complete reconstruction needed – existing infrastructure is failed, in the combined or Over/Under configuration, and/or a PACP/MACP structural condition scores of 5.	25
Critical	Major reconstruction is needed to maintain integrity, and/or PACP/MACP structural condition scores between 4-5.	20
Poor	Partial reconstruction or extensive rehabilitation required to maintain integrity, and/or PACP/MACP structural condition scores between 3-4.	15
Fair	Major rehabilitation is needed to maintain integrity, and/or a PACP/MACP structural condition scores between 2-3.	10
Good	Routine maintenance and periodic repairs required to maintain integrity, and/or a PACP/MACP structural condition scores between 1-2.	5

For projects where the infrastructure condition is unknown, the infrastructure condition will be assessed and scored based on age using **Table 3**. Applications should include documentation verifying the age of infrastructure, as well as any additional qualitative or historical information that can confirm the current condition

Table 3. Rating System for Unknown Structural Infrastructure Condition

Age	Points
50 years	25
40-49 years	20
30-39 years	15
20-29 years	10
0-19 years	5

For projects proposing to remove/eliminate failing Home Sewage Treatment System (HSTS), the infrastructure condition will be assessed using **Table 4**. Information that expands on the description should be provided with the application to assist with the scoring of this category.

Table 4. Rating System for Home Sewage Treatment System Projects

Age of HSTS	Points
20 years or older	25
19-16 years old	20
15-11 years old	15
10-7 years old	10
6 years old or less	5

NOTE: Projects proposing to remove/eliminate failing HSTSs must provide:

- Documentation that the area the community is targeting is part of an approved prescription of the Municipality’s 208 Plan, or
- A feasibility study for removal has been completed, or
- A letter and/or agreement with the property owners or for the sanitary sewer assessment has been executed.

6.2 Water Quality & Quantity Impacts on Human Health and the Environment (40%)

Demonstrate the effects of the project on water quality and quantity. The water quality and quantity impacts will be assessed using **Table 5**. Responses should be formulated that provide clarity to the following questions:

- What is the frequency and/or magnitude of the problem?
- What is the direct human health or environmental impact?
- How many verified homes, businesses, or other occupied structures will see a benefit from this project?
- How will the proposed project eliminate or reduce the water quality/quantity impact?
- How will the proposed project mitigate the potential for unregulated release of sewage to the environment.

Table 5. Rating System for Water Quality/Quantity Impacts

Type	Description	Points		
Failed HSTS, Illicit Discharge	Removal of a continuous source of water quality impairment during wet and dry weather	10 ≤10 units	15 11 - 49 units	20 ≥50 units
Wastewater Treatment Plant Elimination	Elimination of failing WWTP (public or private) with new connection to a sanitary system tributary to a NEORSW WWTP	10 ≤0.01 MGD	15 0.02 - 0.25 MGD	20 ≥0.26 MGD
Pump Station Improvements	Reducing the impacts of failing/outdated infrastructure and/or capacity issues	10 Equipment Replacement and/or Updates	15 Equipment Replacement and/or Updates, plus Capacity Improvements	20 Equipment Replacement and/or Updates, plus Capacity Improvements, and Force Main Rehabilitation
Basement Flooding	Reducing intermittent and direct water quality impairments to human health and private property	10 ≤10 basements	15 11 - 19 basements	20 ≥20 basements
CSO/SSO	Removal of wet weather source of water quality impairment	6 Unknown effect of project	10 Modeled quantity and/or multiple locations	
Inflow/Infiltration	Conserving capacity in the sanitary sewer system	1-5 Sliding scale depending on the severity of I/I		
Common Trench	Reducing water quality impacts from common trench sewers	1 Lining/Spot Repair	3 New Storm or Sanitary	5 Fully Separated

Information that verifies and quantifies the water quality and quantity issues should be provided with the application and appropriately referenced within the response (e.g., page or document reference). **Documentation will be scored on a sliding scale from 1 to 10 depending on clarity of narrative and sufficient data.** Information that verifies and quantifies the water quality and quantity issues should be provided with the application and appropriately referenced within the response (e.g., page or document reference). Examples of project type and corresponding, supporting evidence include but are not limited to the following:

6.2.1 HSTS /Illicit Discharge Elimination

- Findings & Orders or Public Nuisance issued (e.g. Board of Health, Ohio EPA)
- Sampling data supporting water quality deficiency issues (e.g. *E. coli*, Pollutant Load)
- Regulatory agency mandates citing deficiencies
- Documentation of failing HSTS

6.2.2 Wastewater Treatment Plant Elimination

- Findings & Orders or Public Nuisance issued (e.g. Board of Health, Ohio EPA)
- Sampling data supporting water quality deficiency issues (e.g. *E. coli*, Pollutant Load)
- Reports showing the system routinely exceeds NPDES Permit effluent limitations
- Regulatory agency mandates citing deficiencies
- Documentation of failing WWTP
- Facility Planning Area Prescriptions for Wastewater Treatment

6.2.3 Pump Station Improvements

- Documentation of high I/I and/or sanitary sewer overflows
- Documentation of failing infrastructure or capacity issues
- Increased pumping capacity or new pumping facilities to address flat or low areas subject to surcharging and basement backups
- Life cycle maintenance and equipment replacement to repair failing infrastructure

6.2.4 Basement Flooding Mitigation

- Documentation of reported flooding events such as:
 - Household surveys with addresses and details of flooding events
 - Call logs with flood event dates
 - Photos of the event
- Desktop or hydrologic/hydraulic modeling results (hydraulic grade line, projected basements at-risk)

6.2.5 Combined Sewer Overflow (CSO)/ Sanitary Sewer Overflow (SSO) Elimination/Reduction/Control

- Monitoring results (Overflow volume, number of activations, dates)
- Modeling results (Overflow volume, number of activations, dates)

- Sampling data supporting water quality deficiency issues (e.g. *E. coli*, Pollutant Load)

6.2.6 I/I Reduction or Elimination

- Dye testing
- Smoke testing
- CCTV
- Peak flows identified from modeling or study (District Local Sewer System Evaluation Study (LSSES) or other study)

6.2.7 Common Trench Rehabilitation - Trench Type Verification

- Photographs
- Design plans
- CCTV
- Dye Testing
- Smoke Testing

6.2.8 Reduction of Surcharge and Providing Relief Capacity

- Peak flows identified from modeling or study (LSSES or other studies)

6.3 Project Includes Private I/I Remediation (10%)

Projects that address private sources of groundwater/stormwater entering the sanitary sewer collection system, including work outside the public right-of-way and public sewer easements, can earn up to 10 points. This includes investigation and field work (e.g. dye testing, smoke testing, CCTV, etc.) to identify sources of Private I/I, in addition to design and construction of Private I/I remediation. The District will evaluate the estimated effectiveness of Private I/I proposed using **Table 6**. The District is available to coordinate with applicants about appropriate Private I/I remediation work to capture the full 10 points.

Table 6. Project Includes Private I/I Remediation (10%)

Project Type	Description	Points
Investigation Private I/I Sources	Dye Testing/Smoke Testing with private property as target. Ex. Residential downspout dye testing.	1 - 3
Design of Private I/I Remediation	Project will result in stamped plans with private side work included	4 - 6
Construction of Private I/I Remediation	Applicant plans to implement improvements; or funds or support to private property owners to correct with enforcement plan	7 - 10

6.4 Project Provides Significant Benefit to the District (15%)

Demonstrate the benefits of the Project to the District. Benefits include but are not limited to projects that assist in attaining compliance with a District community discharge permit, addresses private property flows to District collection system infrastructure, reduce infrastructure flooding/basement back-ups, expand water quality treatment benefit to new District customers, are recommended by a District study, and/or improve water quality in area waterways that complement the District’s ongoing programs, such as the Project Clean Lake Program, LSSEs, or Regional Stormwater Management Program.

6.5 Non-District Matching Funding (10%)

Points for non-District matching funds will be awarded in accordance with **Table 7**. Applications must provide documentation of funding sources.

Projects within IIFA are only allowed to provide a 25% match. IIFA applications indicating greater than 25% match towards the project will not be granted additional points for Non-District Matching Funding.

If the District waives the matching funds requirement for an applicant based on their fiscal status as discussed in **Section 3.6.1**, the application will be awarded one (1) point.

Table 7. Non-District Project Match Scoring for non-IIFA Projects

% Match	Points
25	1
26-28	2
29-31	3
32-34	4
35-37	5
38-40	6
41-43	7
44-47	8
48-49	9
50-99	10

6.6 Design Complete (5 extra points)

Five (5) extra points will be added to the overall project score if the design is complete (professional engineer stamp) and ready for bidding at the time of application submission due date.

6.7 Intercommunity Projects (5 extra points)

Five (5) extra points will be added to the overall project score if the project assists in conserving sewer capacity, addressing water quality concerns at a specific outfall of a downstream community, or a downstream community is able to remove additional flows from an upstream community. The community should reference District Local Sewer System Evaluation Study findings or other data. A letter of acknowledgement from the benefiting community is required.

7.0 AWARD

After evaluation by the review team, District staff will make a recommendation to award MCIP grants based on available funding. Award announcements are anticipated in August 2026. The District is under no obligation to fund any MCIP Grant Program requests.