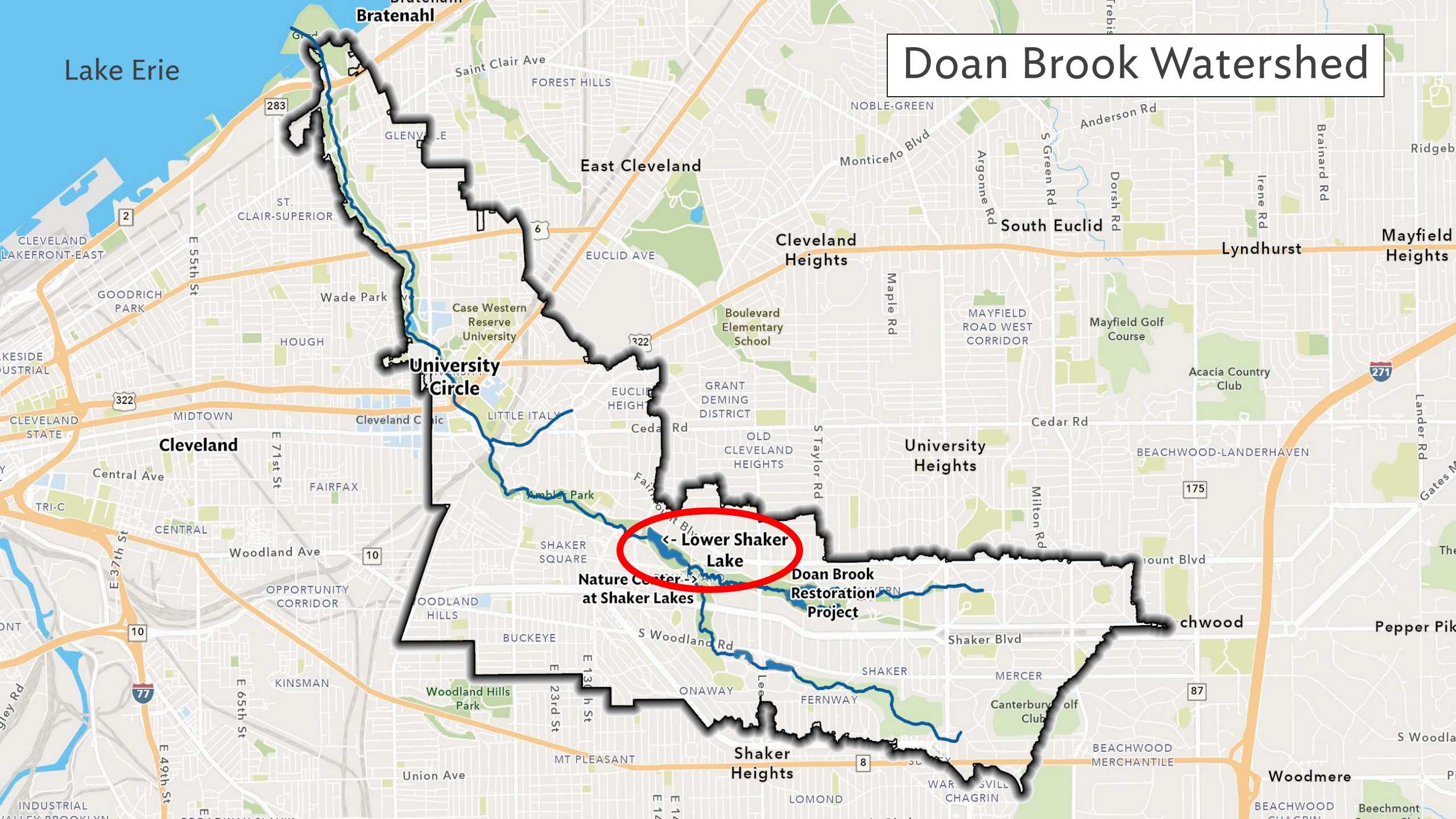


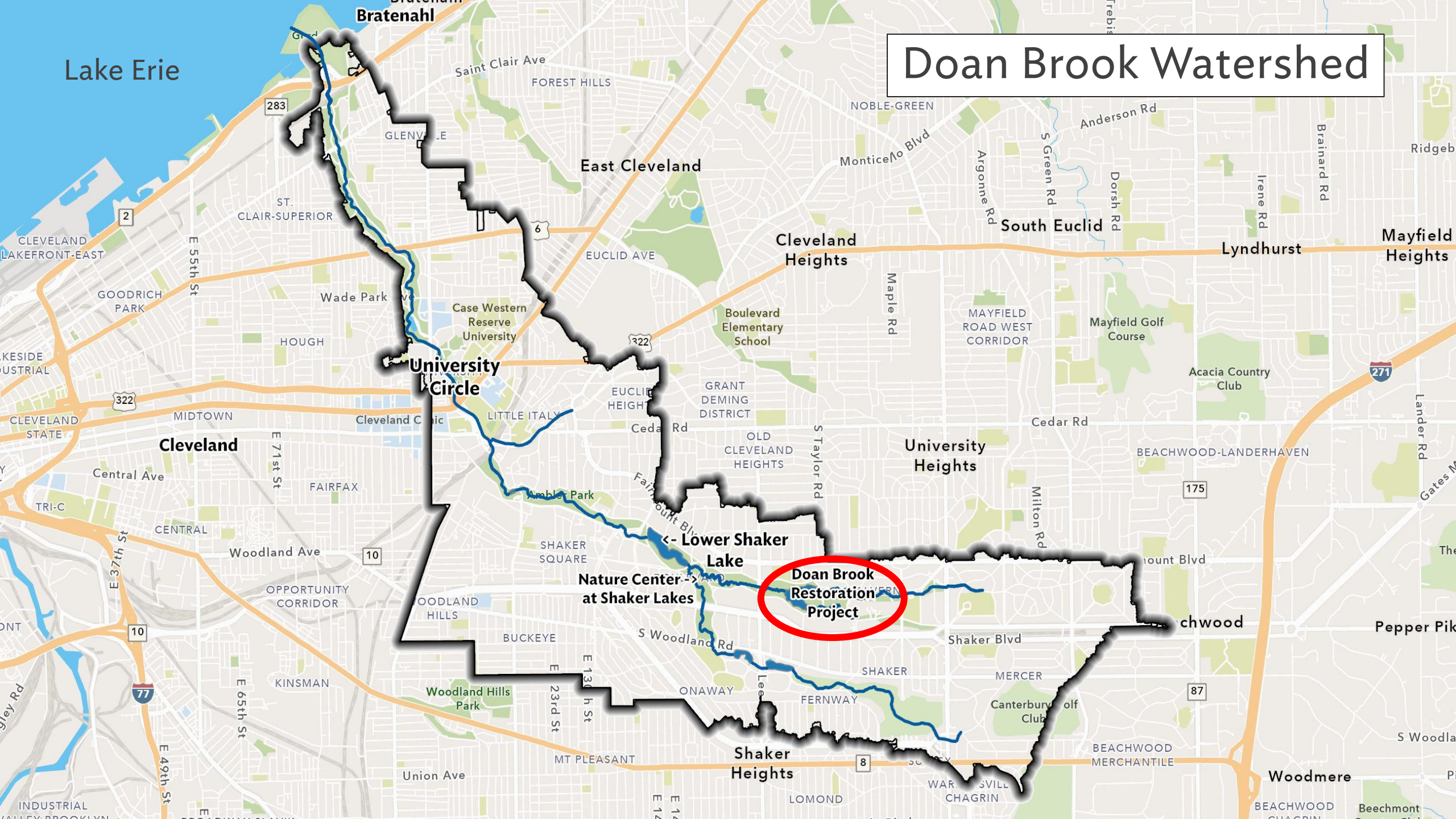


**Northeast Ohio
Regional Sewer District**

Doan Brook Watershed



Doan Brook Watershed



Lower Shaker Lake Dam: *Maintenance*



Post-Maintenance, 2020



Current-Condition, Fall 2025



Location of dam to be removed

Doan Brook Restoration at Horseshoe Park

Tree Removal and Replacement

- Sewer District surveyed 3,000 trees.
 - Thousands of additional trees at the park were not surveyed and will not be impacted
- Tree removal
 - Design minimized the impacts on trees
 - To restore North and Middle Branches of Doan Brook and address dam safety concerns
 - To manage more than 180,000 cubic yards of sediment in former lakebed



Tree Removal and Replacement

- 1,065 trees to be removed (revised from 1,098)
 - 158 dead standing trees
 - 344 trees < 10” diameter breast height
 - 563 trees > 10” diameter breast height (52% of trees to be removed)
- Replanted with all native species
 - 1,106 trees to be planted
 - 6,969 shrubs and 7,359 live stakes to be planted



Emergency Plan Overview for Lower Shaker Lake



Dam Safety Requirements

- Emergency Action Plans are required by ODNR's Dam Safety Program for all High Hazard Class I dams, regardless of dam condition

Purpose: Protect human life and prevent or minimize property losses



Class I High Hazard Dams on Doan Brook

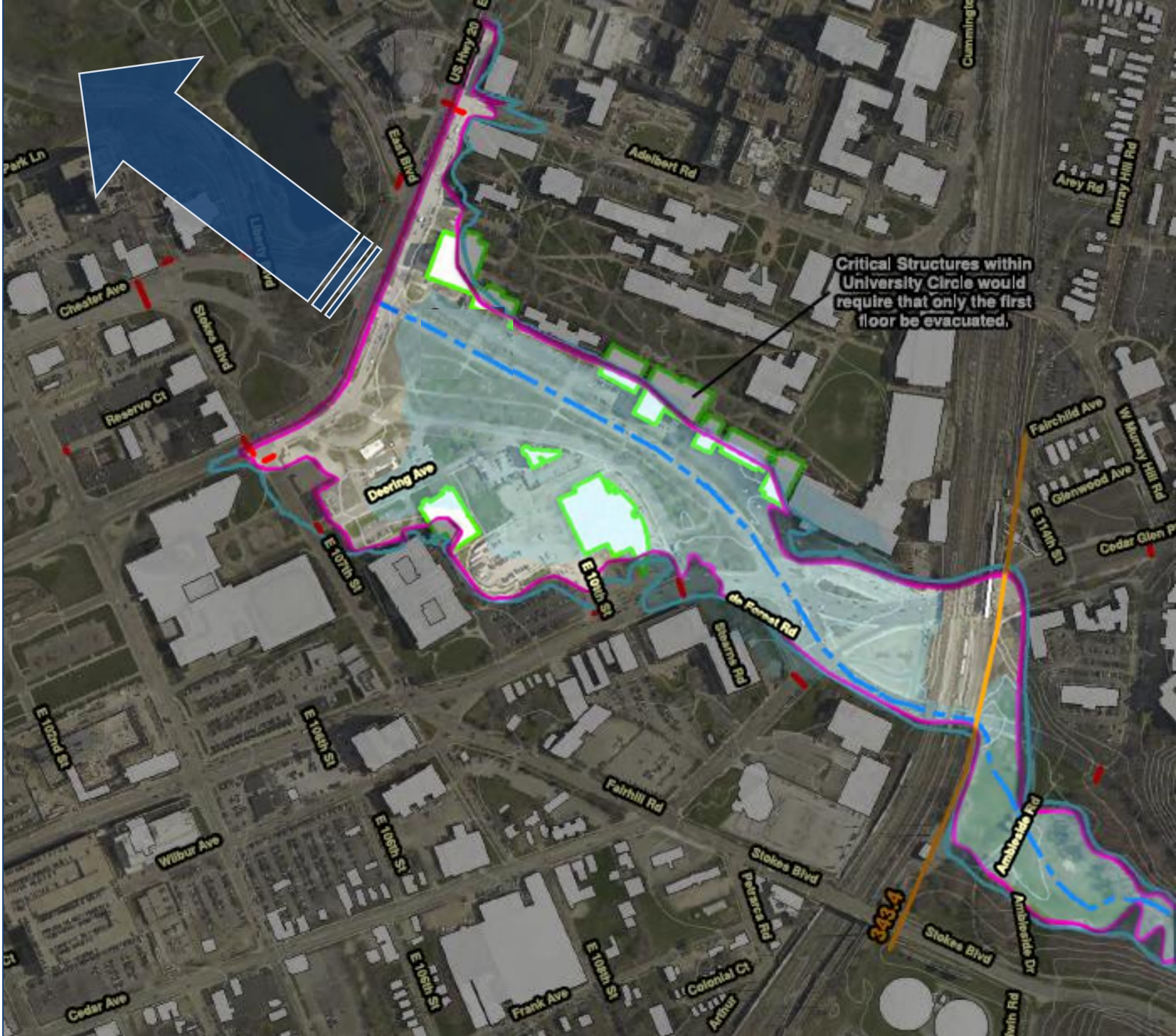
- Areas along the Doan Brook corridor that would likely be impacted if failure occurred:
 - Immediately adjacent to and downstream of dams
 - Throughout Ambler Park
 - Case Western Reserve Campus corridor
 - On and along Martin Luther King Jr Drive

Inundation Map: Lower Shaker Lake to Ambleside Dr



Inundation Map: Ambleside Dr to Euclid Ave

*Flooding would be expected in the Doan Valley, Rockefeller Park area





**DOAN BROOK
RESTORATION
AT HORSESHOE PARK**

neorsd.org/DoanBrook