



**Assuring clean water
for a Greater Cleveland**

Northeast Ohio Regional Sewer District

Clean water.

a magnet for commerce in Greater Cleveland.

We want people to come to Cleveland. To visit, to live, to do business. When data shows Americans take more than 1.8 billion trips to water-related destinations each year – increasing recreation, buying and selling, and creating jobs in the process – why shouldn't people pick Cleveland? The Lake of 1972 was not a draw; it was a disaster. Since then, the Sewer District has taken pride in Lake Erie's and the Cuyahoga River's rebirth. And we are proud of the role we played and will continue to play in making our water resources the magnet that can bring people and their passion to Greater Cleveland.

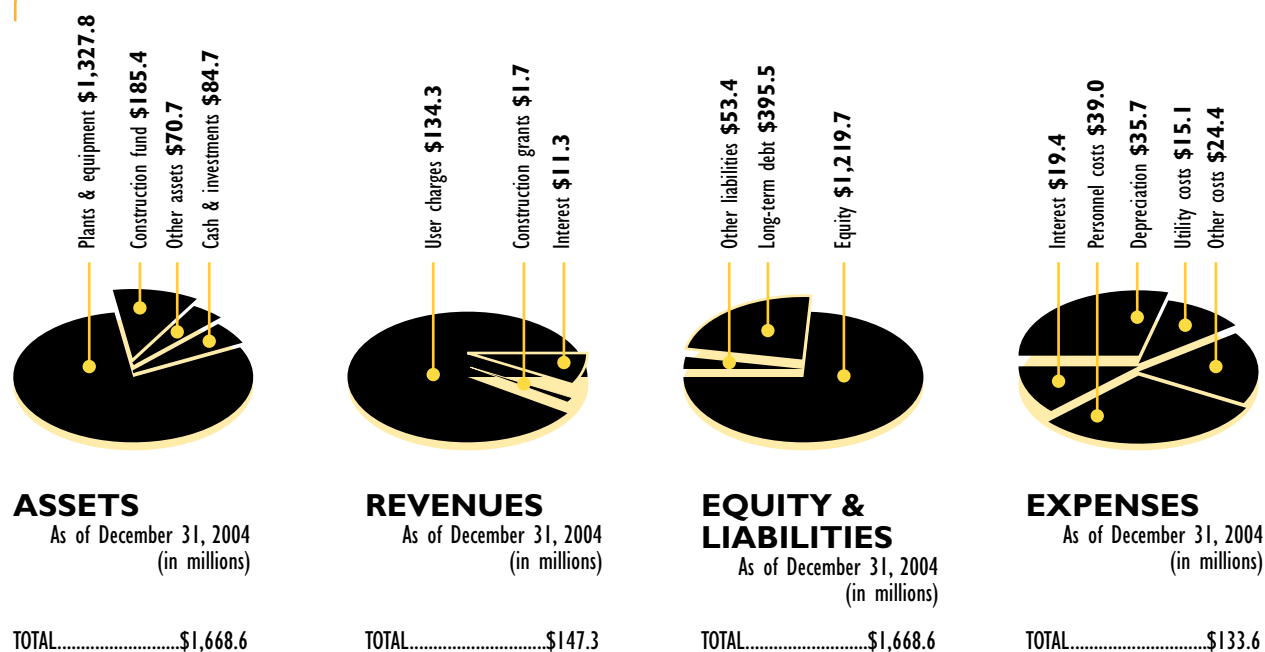
SEEBELIEVE

As a tool for business as well as the public, we **LAUNCHED OUR NEW WEBSITE** in August. NEORSD.org provides rate schedules, information on opportunities for Minority and Women's Business Enterprises, and overviews of our rate-savings programs.



▲ **FISHERMEN FROM ACROSS THE COUNTRY** and Canada troled the Lake Erie shore last July, participating in the Professional Walleye Trail (PWT) Tournament, whose awards ceremony at Voinovich Park is pictured above. This was the first time the PWT docked in Cleveland. The National Survey of Fishing, Hunting and Wildlife-Associated Recreation estimates that US anglers spend \$761 million each year on fishing in Ohio.

2004 FINANCIAL DATA



Northeast Ohio Regional Sewer District



**Assuring clean water
for a Greater Cleveland**
Northeast Ohio Regional Sewer District



Clean water.

improving the quality of life in our region.

We have invested more than \$1.8 billion over 32 years to improve water quality in the Greater Cleveland area. Our focus has always been providing customers with a better, healthier future. Just as our groundbreaking work three decades ago is paying off in 2005, our customers' continued investments will show dividends as we look ahead: fewer overflows to the environment, reduced bacteria levels, and better water quality. It all contributes to a better quality of life.

SEEBELIEVE

Two of our treatment plants – Easterly and Westerly – **EARNED PERFORMANCE AWARDS** for permit compliance.

Our Water Quality & Industrial Surveillance department **COLLECTED 73 POUNDS OF MERCURY** for safe and proper disposal.

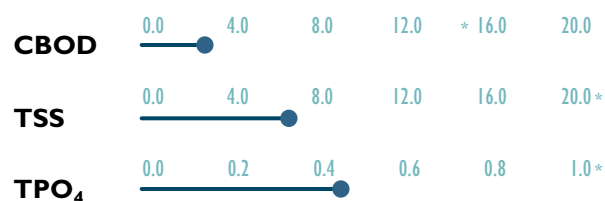
By **IMPROVING ODOR-CONTROL UNITS** at our Southerly treatment plant (right), we reduced air emissions in the Village of Cuyahoga Heights.

OUR EMPLOYEES CONTRIBUTED more than \$40,000 to fundraising campaigns in 2004 to benefit local charities and needy families.



PLANT PERFORMANCE DATA

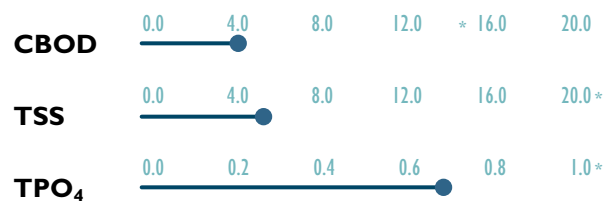
EASTERLY



SOUTHERLY



WESTERLY



Average annual effluent concentration in milligrams per liter.
(*) represents permit limits for 30-day averages.

CBOD *Carbonaceous Biochemical Oxygen Demand* is a measurement of the amount of dissolved oxygen consumed to break down carbon-containing compounds in the water. High levels of CBOD deprive aquatic life of its oxygen.

TSS The measurement of *Total Suspended Solids* indicates the amount of insoluble solids floating or suspended in water.

TPO₄ *Total Phosphorus* is the sum of all forms of phosphorus, an essential nutrient for aquatic life. But in large amounts, phosphorus may stimulate the growth of nuisance quantities of algae, which can negatively affect the aquatic environment.

Northeast Ohio Regional Sewer District



**Assuring clean water
for a Greater Cleveland**
Northeast Ohio Regional Sewer District



Clean water.

an investment in Cleveland's future.

The Sewer District doesn't just spend money. We invest. From construction projects to community outreach, we understand that every one of our customers' dollars is more than a service charge; it is a charge to do service: to protect health, improve the environment, and strengthen our city and suburbs. The challenge is great, but the rewards are a Greater Cleveland.

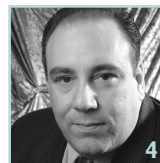
SEEBELIEVE

A new **MILE-LONG OUTFALL PIPE**, where the Westerly treatment plant releases its treated water to Lake Erie, was completed in December. It replaced an 89-year-old outfall and now allows the plant to operate at its full capacity, treating a maximum 100 million gallons of wastewater per day.

The Water Resource Restoration Sponsor Program (WRRSP) awarded us \$3 million to continue **STREAM-RESTORATION WORK** in West Creek. The projects help to reduce flooding and erosion in the surrounding area.

MIDDLE-SCHOOL STUDENTS TOURED OUR FACILITIES (above, right) as part of a District-sponsored program to promote interest in the fields of math and science.

In response to the 2003 blackout, the District approved construction of **EMERGENCY POWER SYSTEMS** at our facilities to ensure uninterrupted wastewater treatment services.



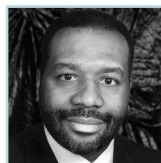
2004 SENIOR STAFF

1 Erwin Odeal *Executive Director* **2** Kenneth Pew *Deputy Executive Director* **3** William Schatz *General Counsel* **4** Michael Bucci *Director of Finance* **5** Thomas Lenhart *Director of Employee Resources* **6** Ana Maldonado *Director of Information Technology* **7** Timothy Tighe *Director of Operations & Maintenance* **8** Charles Vasulka *Director of Engineering & Construction*

2004-2005 BOARD OF TRUSTEES



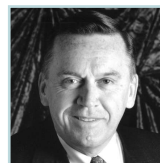
Mayor Gary Starr
President



Darnell Brown
Vice President



Ronald Sulik
Secretary



Gerald Boldt



Sheila Kelly



Mayor
Thomas Longo



Michael Nelson, Sr.

Northeast Ohio Regional Sewer District